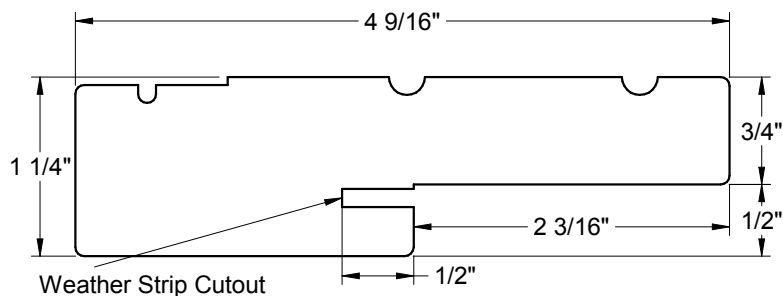


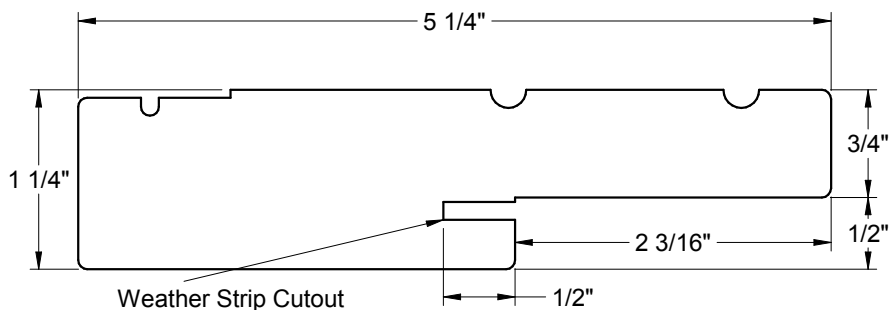
Jamb Profiles	6.3
Head Jamb - Standard.....	6.4
Head Jamb - Arch and Radius.....	6.5
Head Jamb - Continuous with 1 Sidelite and Double Doors	6.6
Head Jamb - Triple and Single with 2 Sidelites	6.7
Head Jamb - French Continuous with 2 Sidelites	6.8
Head Jamb - Continuous with 1 or 2 Venting Sidelites.....	6.9
Head Jamb - Spread Mullion	6.10
Head Jamb - French Multipoint.....	6.11
Head Jamb - French Multipoint with 2 Venting Sidelites	6.12
Side Jamb.....	6.13
Mullions	6.19
Spread Mullion Jamb	6.25
Stainable & Standard Aluminum 7/8" Astragal.....	6.29
Astragal - Outswing Security Cover	6.31
Brickmould.....	6.32
Cove Molding and Head Seal Pad.....	6.37
Mull Casing	6.38
Direct Set Sidelite.....	6.39
Standard Adjusta-Fit® 2 - Inswing	6.40
Standard Adjusta-Fit® 2 Public Access - Inswing/Outswing.....	6.41
Standard Adjusta-Fit® 2 - No Sill	6.42

Frame Parts

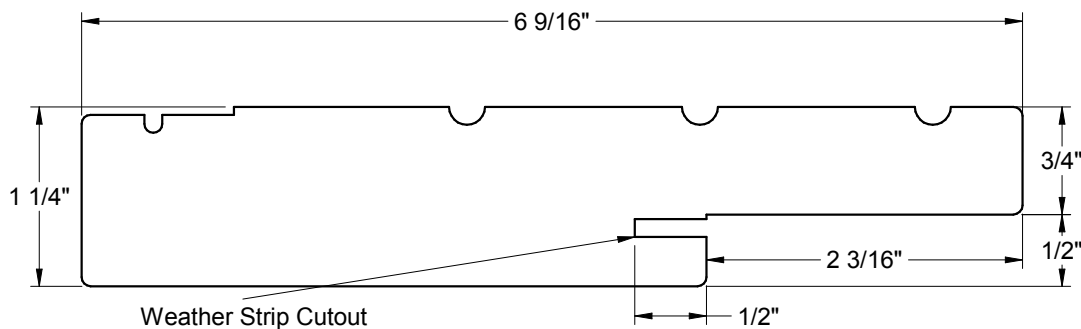
Frame Parts



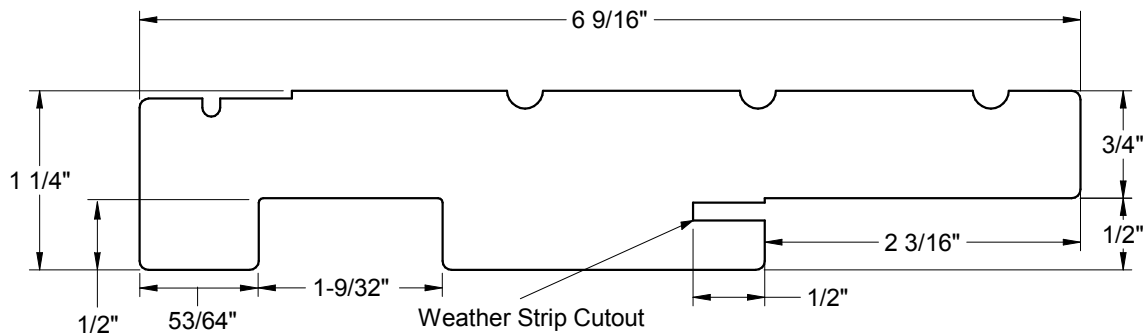
4-9/16" Jamb



5-1/4" Jamb



6-9/16" Jamb



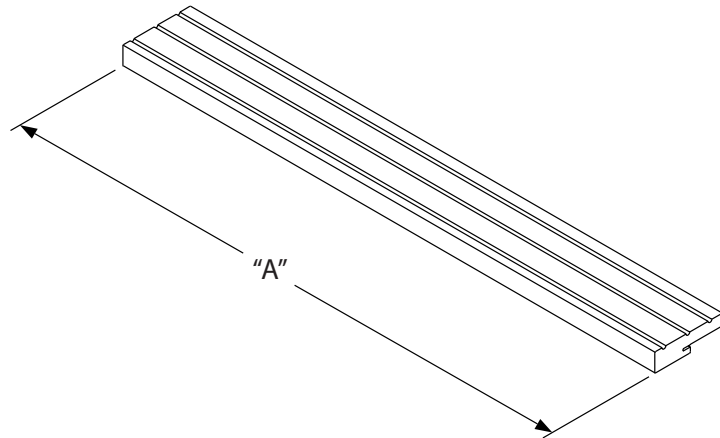
**6-9/16" Patio Jamb
(for sliding screens)**

Frame Parts

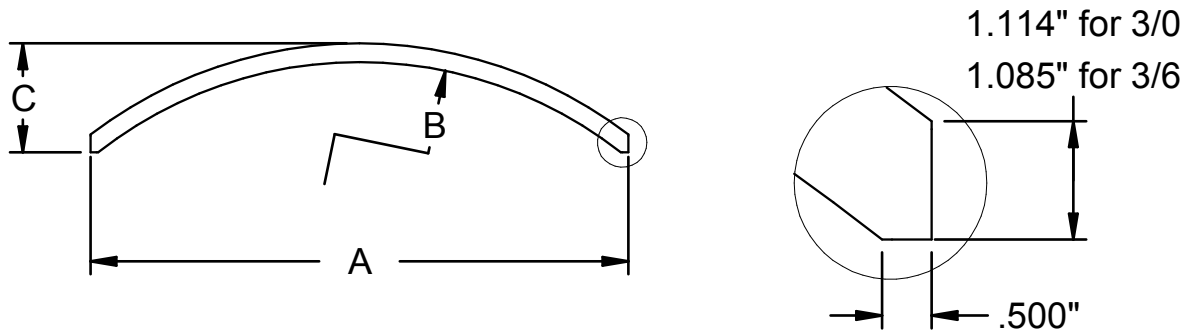
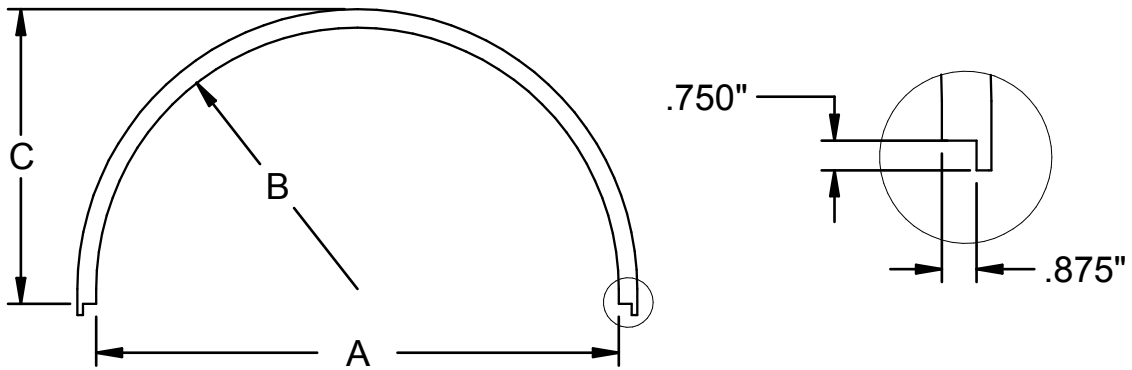
Head Jambs - Standard

UNIT SIZE	LENGTH "A"
10" SIDELITE	10.000
12" SIDELITE	12.000
14" SIDELITE	14.000
2/0 SIDELITE	24.000
2/0 DOOR	24.000
2/4 DOOR	28.000
2/6 DOOR	30.000
2/8 DOOR	32.000
2/10 DOOR	34.000
3/0 DOOR	36.000
3/6 DOOR	42.000
4/0 FRENCH 7/8" ASTRAGAL	48.718
4/8 FRENCH 7/8" ASTRAGAL	56.718
5/0 FRENCH 7/8" ASTRAGAL	60.718
5/4 FRENCH 7/8" ASTRAGAL	64.718
5/8 FRENCH 7/8" ASTRAGAL	68.718
6/0 FRENCH 7/8" ASTRAGAL	72.718
7/0 FRENCH 7/8" ASTRAGAL	84.718

Head Jamb



Frame Parts

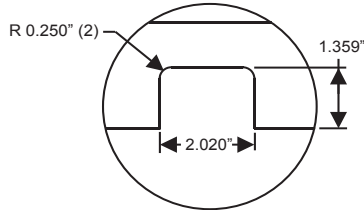
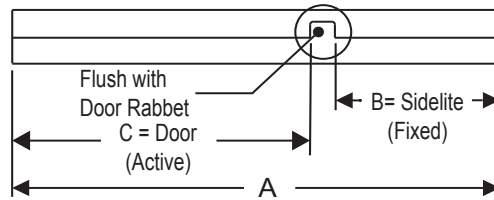


Frame Parts

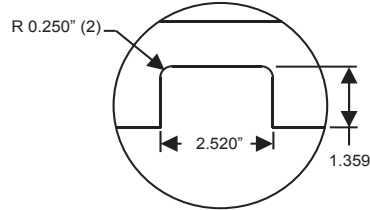
UNIT SIZE	LENGTH "A"	RADIUS "B"	HEIGHT "C"
3/0 RADIUS	34.972"	17.486"	19.736"
3/6 RADIUS	40.968"	20.484"	22.734"
3/0 ARCH	35.968"	28.486"	7.247"
3/6 ARCH	41.968"	39.751"	6.934"

Head Jamb - Continuous with 1 Sidelite and Double Doors

Inswing Active Left Shown



STANDARD

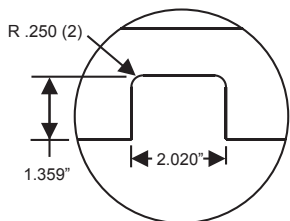
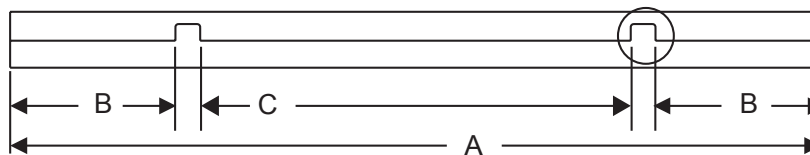


WIDE

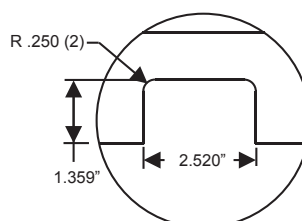
Frame Parts

CONTINUOUS WITH 1 SIDELITE						
	STANDARD MULLION			WIDE MULLION		
	A	B	C	A	B	C
2/4 W/1-10" SL	39.000	9.490	27.490	39.500	9.490	27.490
2/4 W/1-12" SL	41.000	11.490		41.500	11.490	
2/4 W/1-14" SL	43.000	13.490		43.500	13.490	
2/6 W/1-10" SL	41.000	9.490	29.490	41.500	9.490	29.490
2/6 W/1-12" SL	43.000	11.490		43.500	11.490	
2/6 W/1-14" SL	45.000	13.490		45.500	13.490	
2/8 W/1-10" SL	43.000	9.490	31.490	43.500	9.490	31.490
2/8 W/1-12" SL	45.000	11.490		45.500	11.490	
2/8 W/1-14" SL	47.000	13.490		47.500	13.490	
2/10 W/1-10" SL	45.000	9.490	33.490	45.500	9.490	33.490
2/10 W/1-12" SL	47.000	11.490		47.500	11.490	
2/10 W/1-14" SL	49.000	13.490		49.500	13.490	
3/0 W/1-10" SL	47.000	9.490	35.490	47.500	9.490	35.490
3/0 W/1-12" SL	49.000	11.490		49.500	11.490	
3/0 W/1-14" SL	51.000	13.490		51.500	13.490	
3/6 W/1-10" SL	53.000	9.490	41.490	53.500	9.490	41.490
3/6 W/1-12" SL	55.000	11.490		55.500	11.490	
3/6 W/1-14" SL	57.000	13.490		57.500	13.490	

DOUBLE DOOR						
	STANDARD MULLION			WIDE MULLION		
	A	B	C	A	B	C
4/8 DOUBLE MULLION	57.000	27.490	27.490	57.500	27.490	27.490
5/0 DOUBLE MULLION	61.000	29.490	29.490	61.500	29.490	29.490
5/4 DOUBLE MULLION	65.000	31.490	31.490	65.500	31.490	31.490
5/8 DOUBLE MULLION	69.000	33.490	33.490	69.500	33.490	33.490
6/0 DOUBLE MULLION	73.000	35.490	35.490	73.500	35.490	35.490



STANDARD

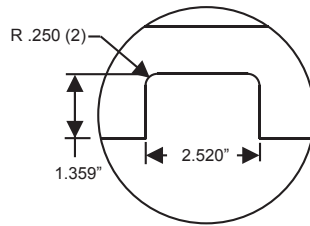
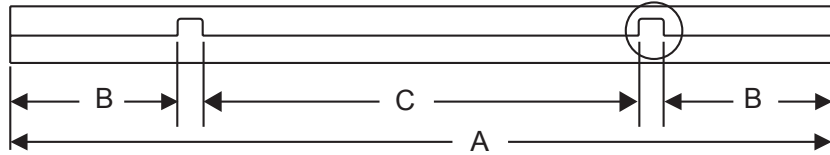


WIDE

TRIPLE AND SINGLE WITH 2 SIDELITES							
		STANDARD MULLION			WIDE MULLION		
		A	B	C	A	B	C
TRIPLE UNITS	7/0 TRIPLE	86.000	27.490	26.980	87.000	27.490	26.980
	7/6 TRIPLE	92.000	29.490	28.980	93.000	29.490	28.980
	8/0 TRIPLE	98.000	31.490	30.980	99.000	31.490	30.980
	8/6 TRIPLE	104.000	33.490	32.980	105.000	33.490	32.980
	9/0 TRIPLE	110.000	35.490	34.980	111.000	35.490	34.980
	10/6 TRIPLE	128.000	41.490	40.980	129.000	41.490	40.980
CONTINUOUS WITH 2 SIDELITES	2/4 W/2-10" SL	50.000	9.490	26.980	51.000	9.490	26.980
	2/4 W/2-12" SL	54.000	11.490		55.000	11.490	
	2/4 W/2-14" SL	58.000	13.490		59.000	13.490	
	2/6 W/2-10" SL	52.000	9.490	28.980	53.000	9.490	28.980
	2/6 W/2-12" SL	56.000	11.490		57.000	11.490	
	2/6 W/2-14" SL	60.000	13.490		61.000	13.490	
	2/8 W/2-10" SL	54.000	9.490	30.980	55.000	9.490	30.980
	2/8 W/2-12" SL	58.000	11.490		59.000	11.490	
	2/8 W/2-14" SL	62.000	13.490		63.000	13.490	
	2/10 W/2-10" SL	56.000	9.490	32.980	57.000	9.490	32.980
	2/10 W/2-12" SL	60.000	11.490		61.000	11.490	
	2/10 W/2-14" SL	64.000	13.490		65.000	13.490	
	3/0 W/2-10" SL	58.000	9.490	34.980	59.000	9.490	34.980
	3/0 W/2-12" SL	62.000	11.490		63.000	11.490	
	3/0 W/2-14" SL	66.000	13.490		67.000	13.490	
	3/6 W/2-10" SL	64.000	9.490	40.980	65.000	9.490	40.980
	3/6 W/2-12" SL	68.000	11.490		69.000	11.490	
	3/6 W/2-14" SL	72.000	13.490		73.000	13.490	

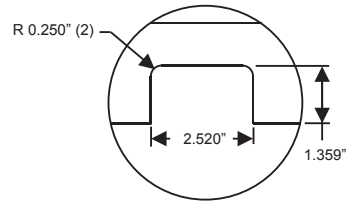
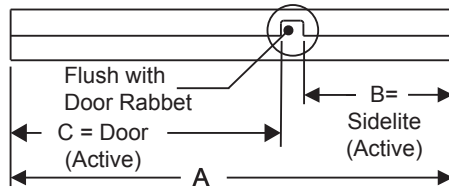
Frame Parts

Head Jambs - French Continuous with 2 Sidelites



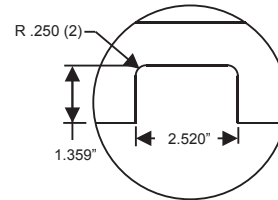
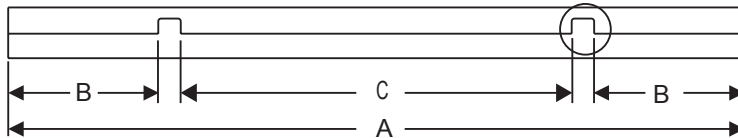
Frame Parts

CONTINUOUS - FRENCH WITH 7/8" ASTRAGAL AND 2 FIXED SIDELITES - WIDE MULLION			
	A	B	C
6/0 W/2-10" SL	95.718	9.49	71.698
6/0 W/2-12" SL	99.718	11.49	
6/0 W/2-14" SL	103.718	13.49	



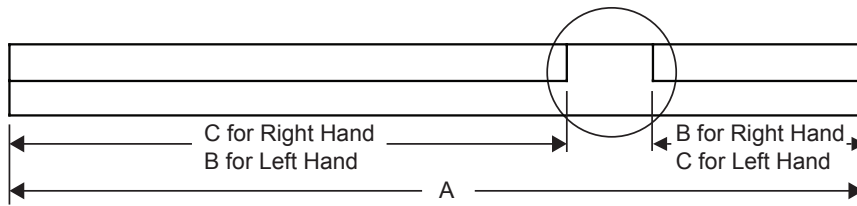
CONTINUOUS WITH 1 VENTING SIDELITE			
	WIDE MULLION		
	A	B	C
2/4 W/1-12" VENTING SL	41.721	11.677	27.524
2/4 W/1-14" VENTING SL	43.721	13.677	
2/6 W/1-12" VENTING SL	43.721	11.677	29.524
2/6 W/1-14" VENTING SL	45.721	13.677	
2/8 W/1-12" VENTING SL	45.721	11.677	31.524
2/8 W/1-14" VENTING SL	47.721	13.677	
2/10 W/1-12" VENTING SL	47.721	11.677	33.524
2/10 W/1-14" VENTING SL	49.721	13.677	
3/0 W/1-12" VENTING SL	49.721	11.677	35.524
3/0 W/1-14" VENTING SL	51.721	13.677	

Frame Parts



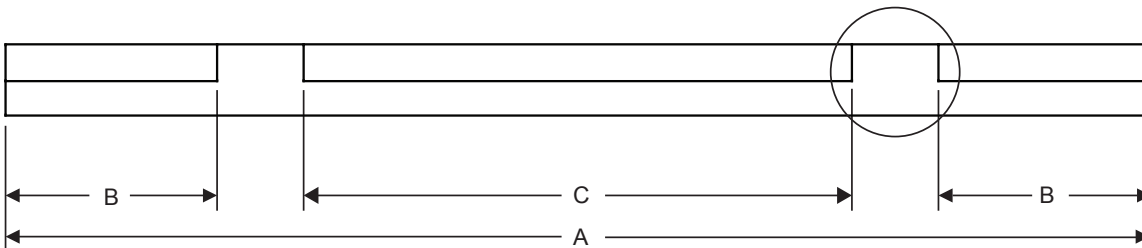
CONTINUOUS WITH 2 VENTING SIDELITES				
		WIDE MULLION		
		A	B	C
SINGLE	2/4 SINGLE W/2-12" VENTING SL	55.408	11.677	27.014
	2/4 SINGLE W/2-14" VENTING SL	59.408	13.677	
	2/6 SINGLE W/2-12" VENTING SL	57.408	11.677	29.014
	2/6 SINGLE W/2-14" VENTING SL	61.408	13.677	
	2/8 SINGLE W/2-12" VENTING SL	59.408	11.677	31.014
	2/8 SINGLE W/2-14" VENTING SL	63.408	13.677	
	2/10 SINGLE W/2-12" VENTING SL	61.408	11.677	33.014
	2/10 SINGLE W/2-14" VENTING SL	65.408	13.677	
	3/0 SINGLE W/2-12" VENTING SL	63.408	11.677	35.014
3/0 SINGLE W/2-14" VENTING SL	67.408	13.677		
FRENCH	4/8 FRENCH W/2-12" VENTING SL	84.126	11.677	55.732
	4/8 FRENCH W/2-14" VENTING SL	88.126	13.677	
	5/0 FRENCH W/2-12" VENTING SL	88.126	11.677	59.732
	5/0 FRENCH W/2-14" VENTING SL	92.126	13.677	
	5/4 FRENCH W/2-12" VENTING SL	92.126	11.677	63.732
	5/4 FRENCH W/2-14" VENTING SL	96.126	13.677	
	5/8 FRENCH W/2-12" VENTING SL	96.126	11.677	67.732
	5/8 FRENCH W/2-14" VENTING SL	100.126	13.677	
	6/0 FRENCH W/2-12" VENTING SL	100.126	11.677	71.732
	6/0 FRENCH W/2-14" VENTING SL	104.126	13.677	

Head Jamb - Spread Mullion

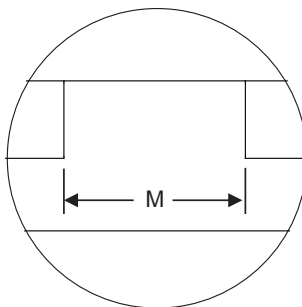


		SPREAD MULLION													
		LENGTH "A"													
UNIT SIZE	"C"	"B"	S000	S025	S050	S075	S100	S125	S150	S175	S200	S225	S250	S275	S300
3/0 W/ 1-10" SIDELITE	35.490	9.490	47.500	47.750	48.000	48.250	48.500	48.750	49.000	49.250	49.500	49.750	50.000	50.250	50.500
3/0 W/ 1-12" SIDELITE		11.490	49.500	49.750	50.000	50.250	50.500	50.750	51.000	51.250	51.500	51.750	52.000	52.250	52.500
3/0 W/ 1-14" SIDELITE		13.490	51.500	51.750	52.000	52.250	52.500	52.750	53.000	53.250	53.500	53.750	54.000	54.250	54.500

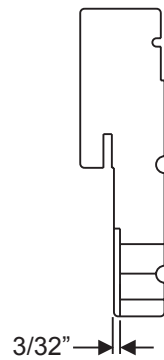
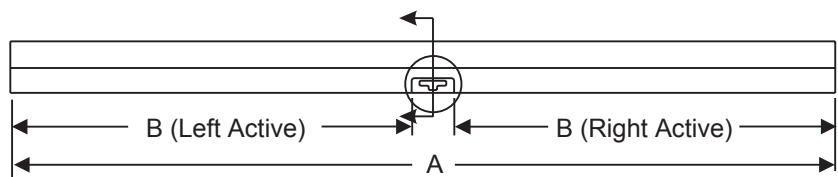
Frame Parts



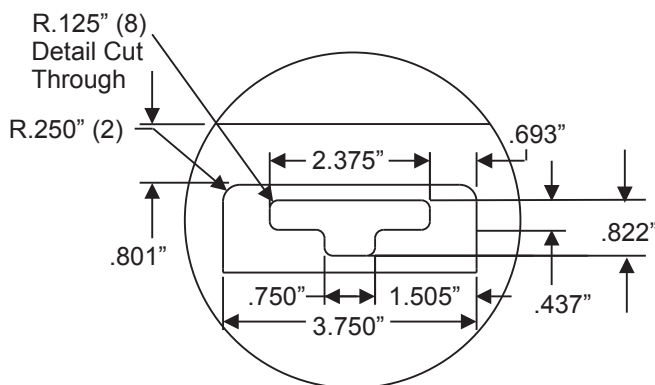
		SPREAD MULLION													
		LENGTH "A"													
UNIT SIZE	"C"	"B"	S000	S025	S050	S075	S100	S125	S150	S175	S200	S225	S250	S275	S300
3/0 W/ 2-10" SIDELITES	34.980	9.490	59.000	59.500	60.000	60.500	61.000	61.500	62.000	62.500	63.000	63.500	64.000	64.500	65.000
3/0 W/ 2-12" SIDELITES		11.490	63.000	63.500	64.000	64.500	65.000	65.500	66.000	66.500	67.000	67.500	68.000	68.500	69.000
3/0 W/ 2-14" SIDELITES		13.490	67.000	67.500	68.000	68.500	69.000	69.500	70.000	70.500	71.000	71.500	72.000	72.500	73.000



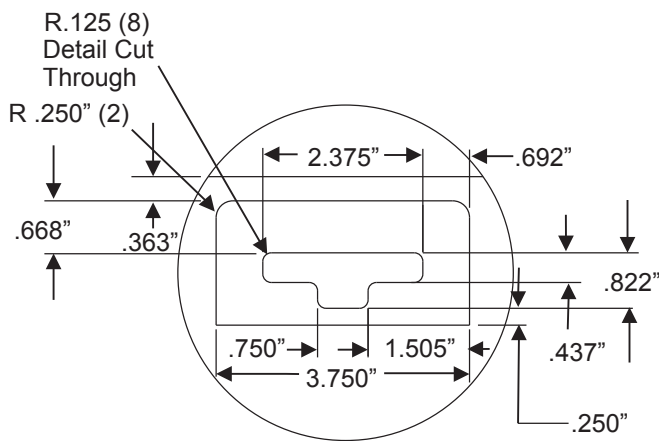
WIDTH "M"												
S000	S025	S050	S075	S100	S125	S150	S175	S200	S225	S250	S275	S300
2.520	2.770	3.020	3.270	3.520	3.770	4.020	4.270	4.520	4.770	5.020	5.270	5.520



FRENCH DOOR WITH MULTI-POINT LOCK			
		A	B
7/8" ASTRAGAL	4/0 FRENCH	48.718	21.583
	4/8 FRENCH	56.718	25.583
	5/0 FRENCH	60.718	27.583
	5/4 FRENCH	64.718	29.583
	5/8 FRENCH	68.718	31.583
	6/0 FRENCH	72.718	33.583
	7/0 FRENCH	84.718	39.583



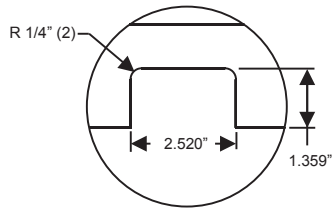
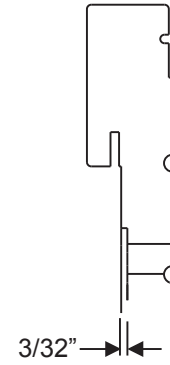
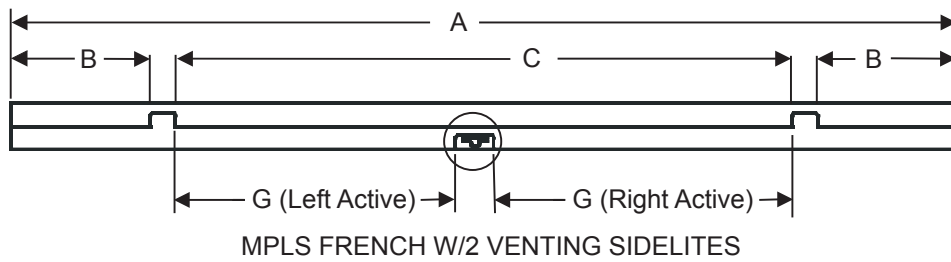
Standard MPLS



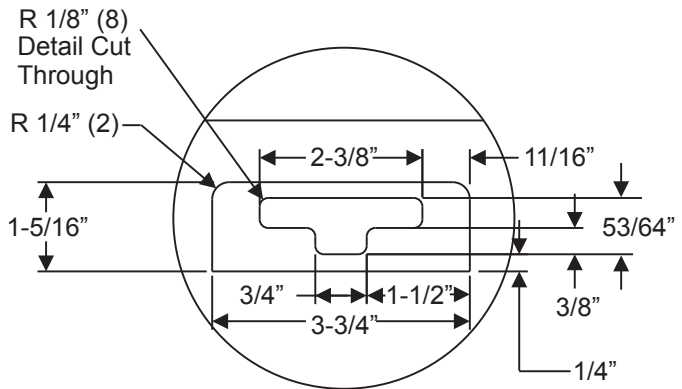
Impact MPLS

Frame Parts

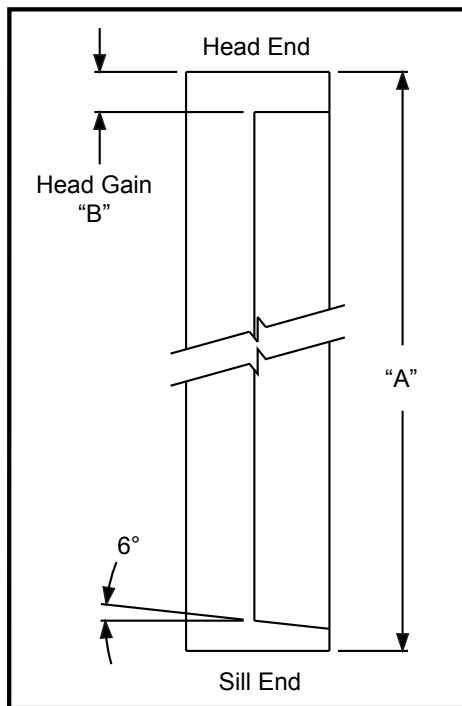
Head Jamb - French Multipoint with 2 Venting Sidelites



Frame Parts

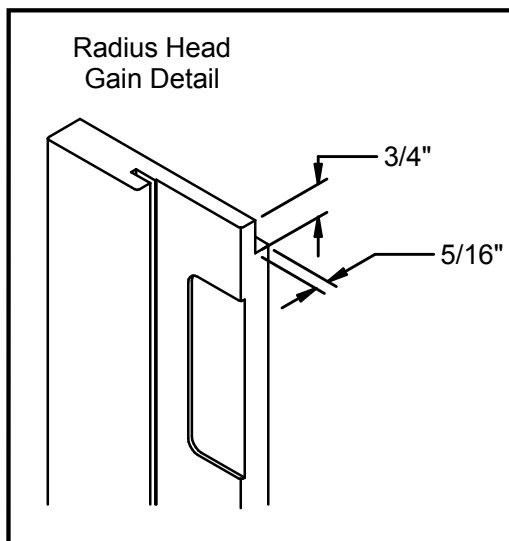


CONTINUOUS WITH 2 VENTING SIDELITES					
		WIDE MULLION			
		A	B	C	G
7/8" ASTRAGAL	4/8 FRENCH W/2-12" VENTING SL	84.126	11.677	55.732	25.106
	4/8 FRENCH W/2-14" VENTING SL	88.126	13.677	55.732	25.106
	5/0 FRENCH W/2-12" VENTING SL	88.126	11.677	59.732	27.106
	5/0 FRENCH W/2-14" VENTING SL	92.126	13.677	59.732	27.106
	5/4 FRENCH W/2-12" VENTING SL	92.126	11.677	63.732	29.106
	5/4 FRENCH W/2-14" VENTING SL	96.126	13.677	63.732	29.106
	5/8 FRENCH W/2-12" VENTING SL	96.126	11.677	67.732	31.106
	5/8 FRENCH W/2-14" VENTING SL	100.126	13.677	67.732	31.106
	6/0 FRENCH W/2-12" VENTING SL	100.126	11.677	71.732	33.106
	6/0 FRENCH W/2-14" VENTING SL	104.126	13.677	71.732	33.106



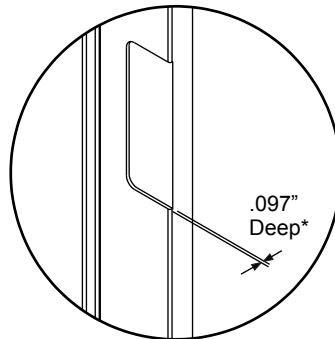
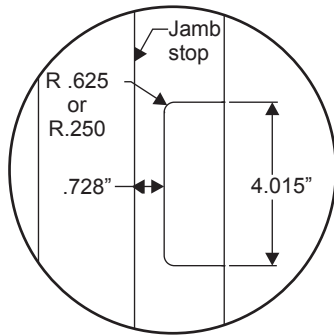
IN SWING JAMB		
UNIT SIZE	LENGTH "A"	HEAD GAIN "B"
6/6	79.280	1.250
6/8	81.625	1.250
7/0	85.625	1.250
8/0	97.625	1.250
6/8 3/0 ARCH	75.948	1.570
6/8 3/6 ARCH	76.182	1.491
8/0 3/0 ARCH	91.948	1.570
8/0 3/6 ARCH	91.182	1.491
6/8 3/0 RADIUS	61.889	SEE FIGURE BELOW
6/8 3/6 RADIUS	58.889	
8/0 3/0 RADIUS	77.889	
8/0 3/6 RADIUS	79.889	

Frame Parts



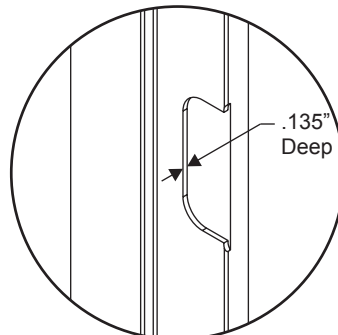
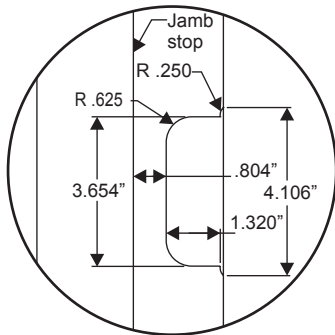
Side Jamb

HINGE MORTISE LOCATIONS						
		UNIT SIZE	HINGE 1	HINGE 2	HINGE 3	HINGE 4
INSWING	STANDARD HINGE	6/6	9.125	38.875	68.625	N/A
		6/8				
		7/0		40.875	72.625	
		8/0		34.125	59.625	
INSWING	ADJUSTABLE HINGE	6/6	9.400	38.650	67.900	N/A
		6/8				
		7/0				
		8/0		6.306	31.806	

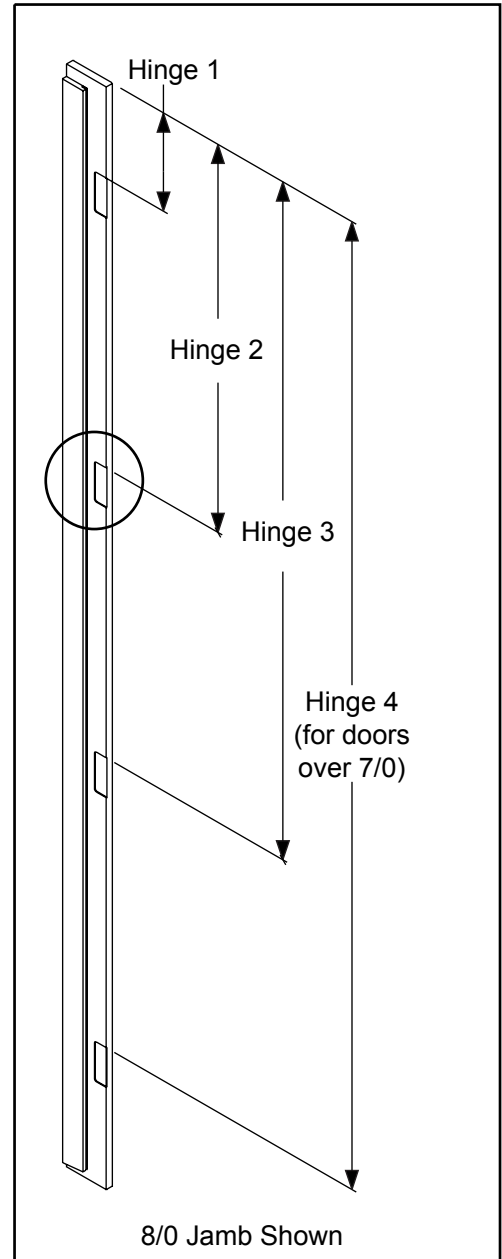


*NOTE: .140" Deep for Steel Edge doors in a wood frame.

Standard Hinge

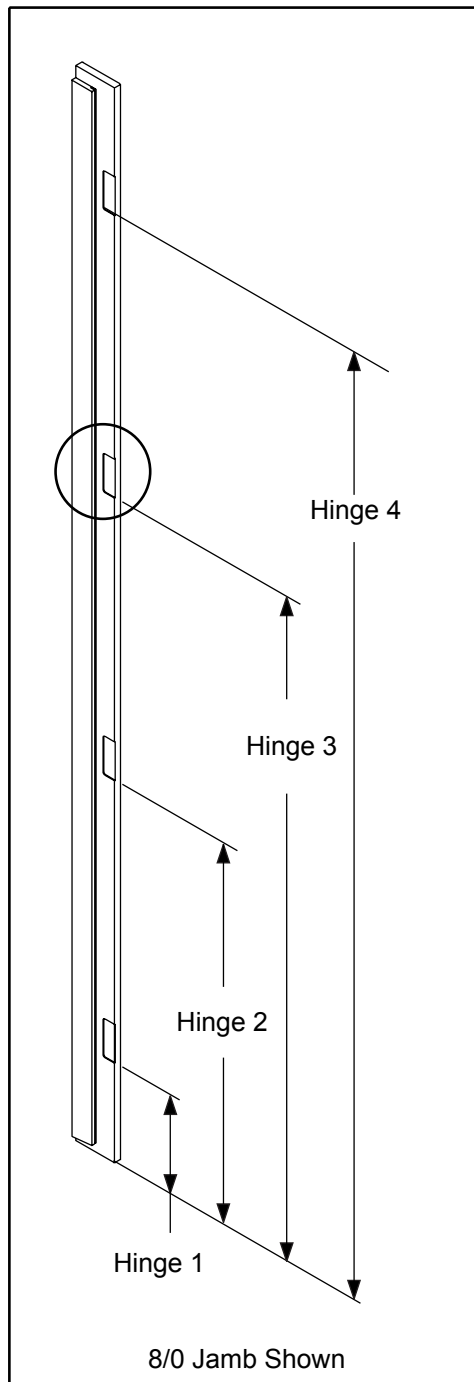
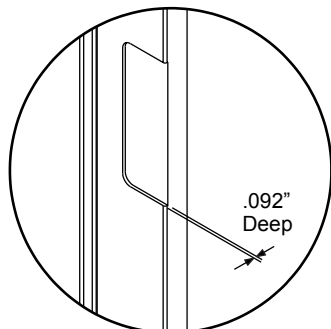
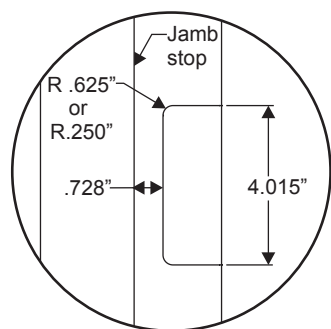


Adjustable Hinge



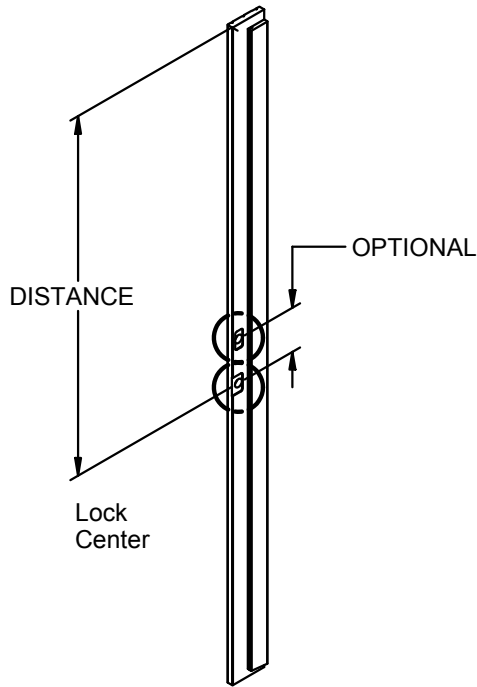
Frame Parts

HINGE MORTISE LOCATIONS						
	UNIT HEIGHT	UNIT WIDTH	HINGE 1	HINGE 2	HINGE 3	HINGE 4
ARCH	6/8	3/0 or 3/6	9.860	37.297	64.735	N/A
	8/0		10.985	34.235	57.485	80.735
RADIUS	6/8	3/0	9.860	32.985	56.110	N/A
		3/6	8.860	30.985	53.110	
	8/0	3/0	10.985	31.360	51.735	72.110
		3/6		30.360	49.735	69.110



Frame Parts

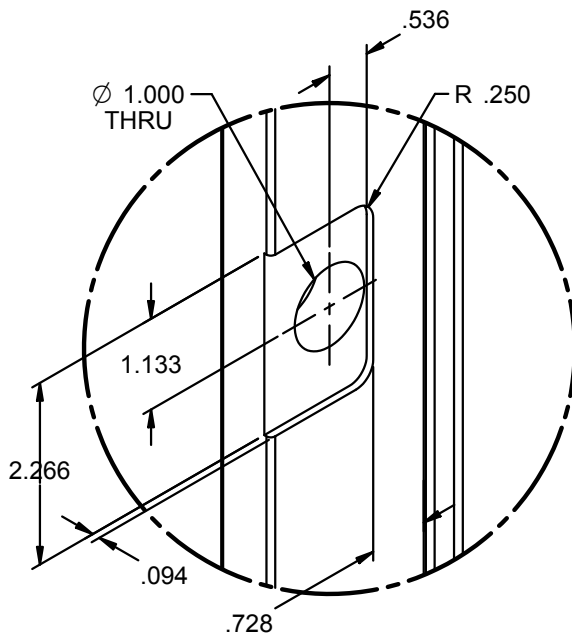
Side Jambs



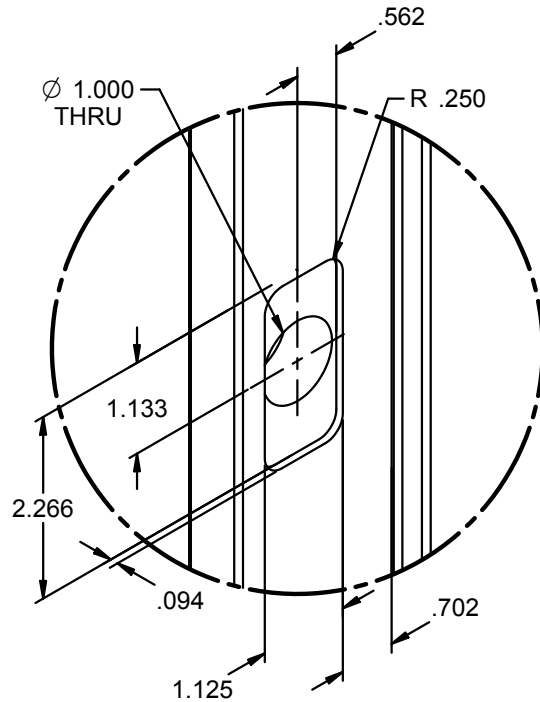
STANDARD SIDE JAMBS	
UNIT SIZE	STRIKE
6/6	44.844
6/8	
7/0	48.844
8/0	60.844

ARCH & RADIUS SIDE JAMBS			
	UNIT HEIGHT	UNIT WIDTH	STRIKE
ARCH	6/8	3/0	39.167
		3/6	39.401
	8/0	3/0	55.167
		3/6	55.401
RADIUS	6/8	3/0	25.108
		3/6	22.110
	8/0	3/0	41.108
		3/6	38.110

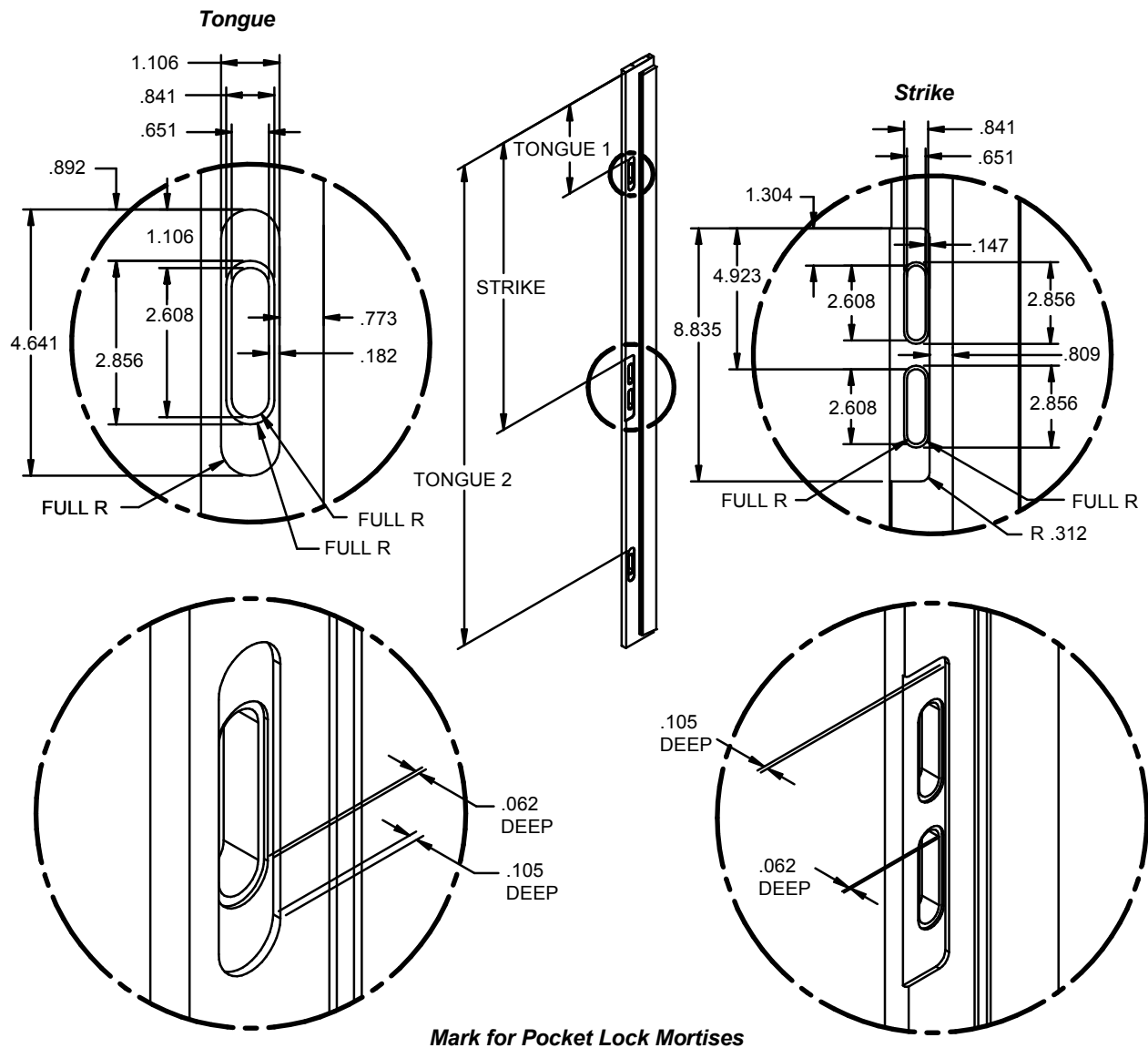
Frame Parts



LATCH MACHINING



OPTIONAL
DEADBOLT MACHINING

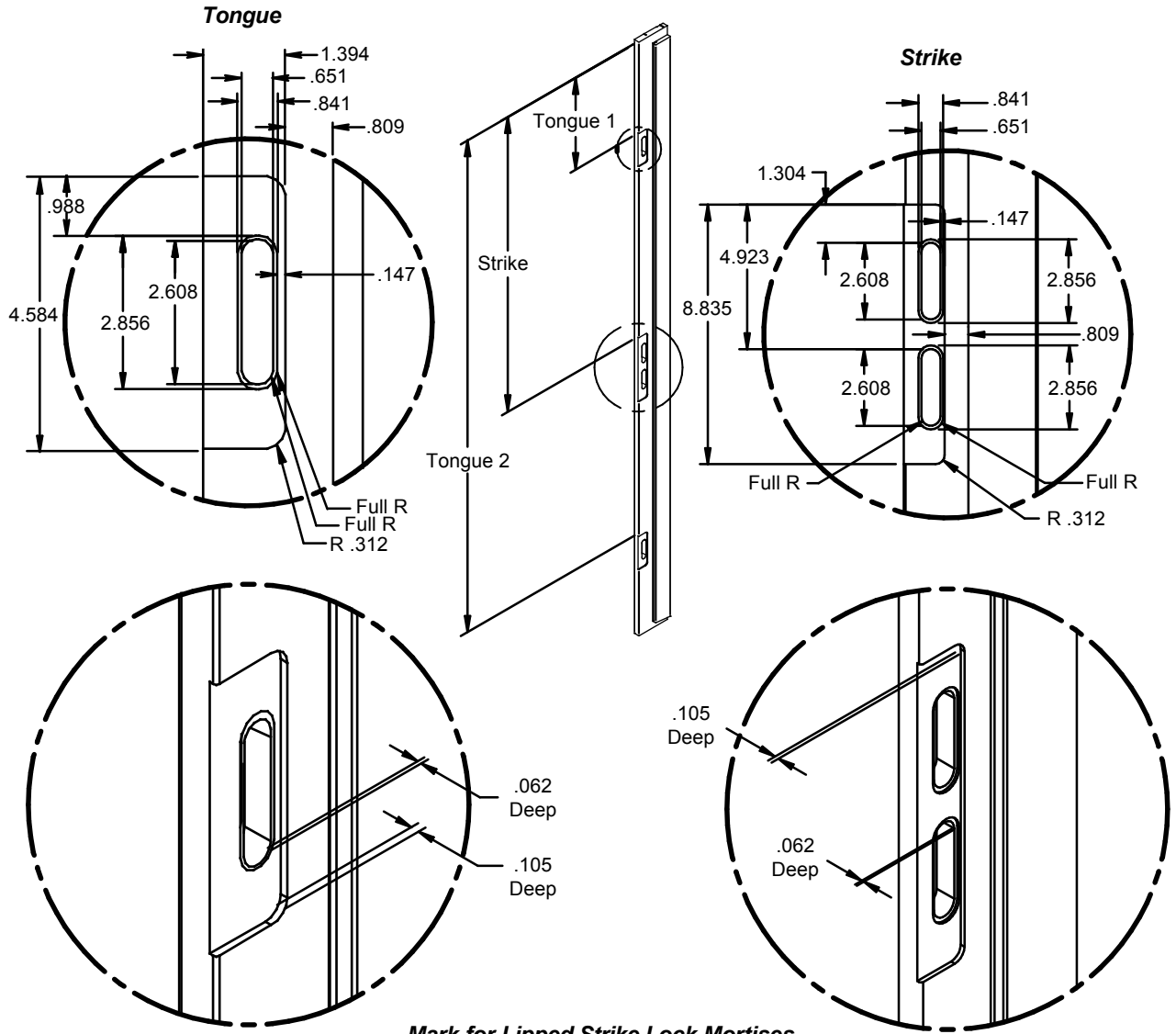


Frame Parts

Manual Pocket - Side Jamb
Lock Mortise Locations

	Unit Size	Strike	Tongue 1	Tongue 2
Pocket Strike Machining	6/6	40.851	12.585	68.254
	6/8	40.648	12.382	68.051
	7/0	44.648	16.382	72.051
	8/0	56.648	10.664	84.051

Side Jambs

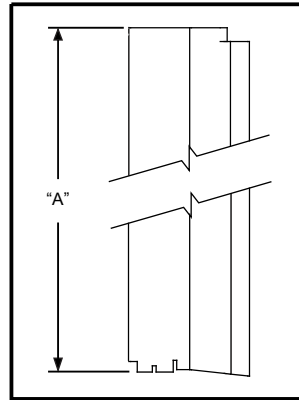
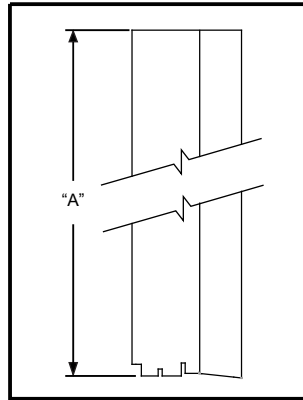


Frame Parts

Mark for Lipped Strike Lock Mortises

Manual Lipped Strike - Side Jamb Lock Mortise Locations

	Unit Size	Strike	Tongue 1	Tongue 2
Lipped Strike Machining	6/6	40.851	12.614	68.283
	6/8	40.648	12.411	68.080
	7/0	44.648	16.411	72.080
	8/0	56.648	10.693	84.080

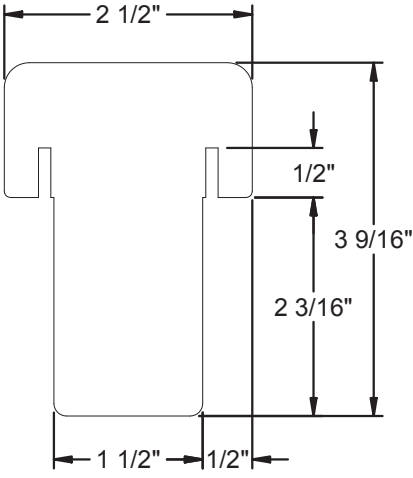
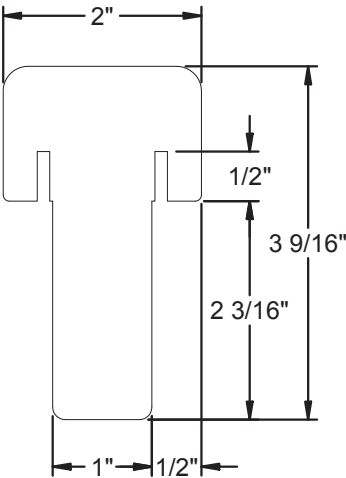


ENTRY MULLION		
	UNIT SIZE	LENGTH "A"
INSWING	6/6	77.680
	6/8	80.031
	7/0	84.031
	8/0	96.031
OUTSWING	6/6	USE PATIO MULLION
	6/8	
	7/0	
	8/0	

PATIO MULLION		
	UNIT SIZE	LENGTH "A"
INSWING	6/6	77.680
	6/8	80.031
	7/0	84.031
	8/0	96.031
OUTSWING	6/6	77.128
	6/8	79.473
	7/0	83.473
	8/0	95.473

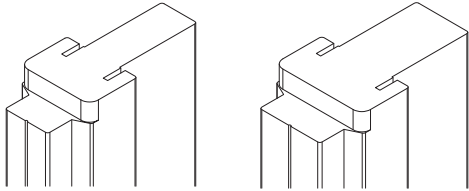
Frame Parts

Mullions

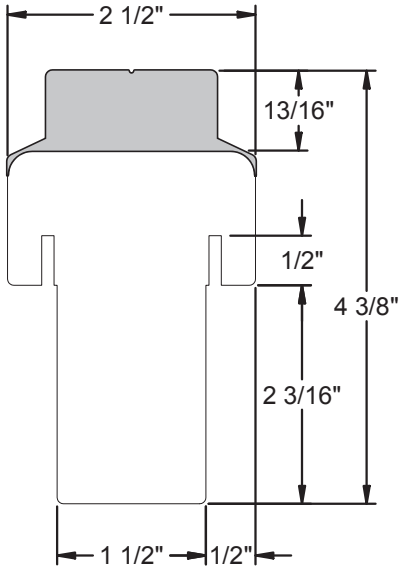
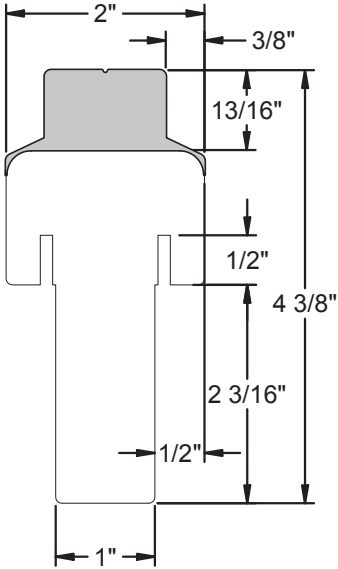


**Oak, Pine, and Rot-Resistant
Standard & Wide Mullion**

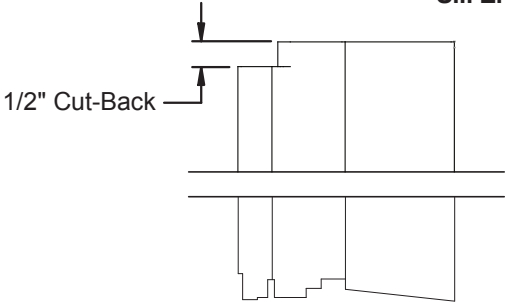
Frame Parts



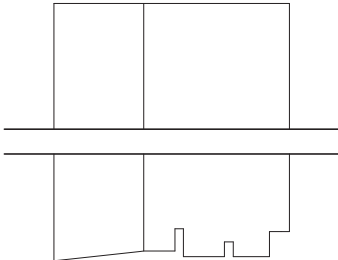
Patio Standard & Wide Mullion
(Must be used with all screen applications)



Sill End Details



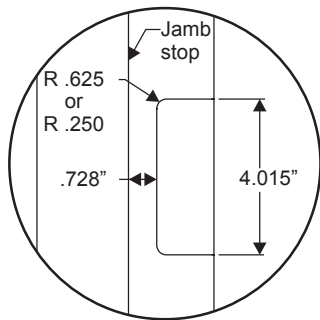
Composite Outswing
(Patio Mullion Must Be Used)



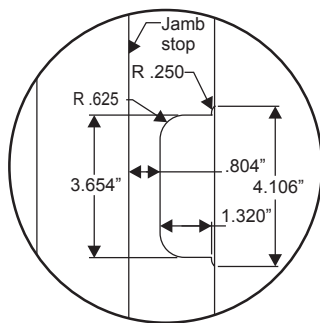
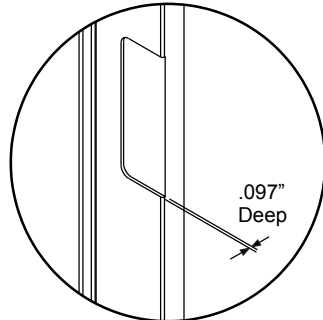
**Composite/Hardwood
Inswing Adjustable**
(Entry Mullion Shown)

Hinge Mortise Locations

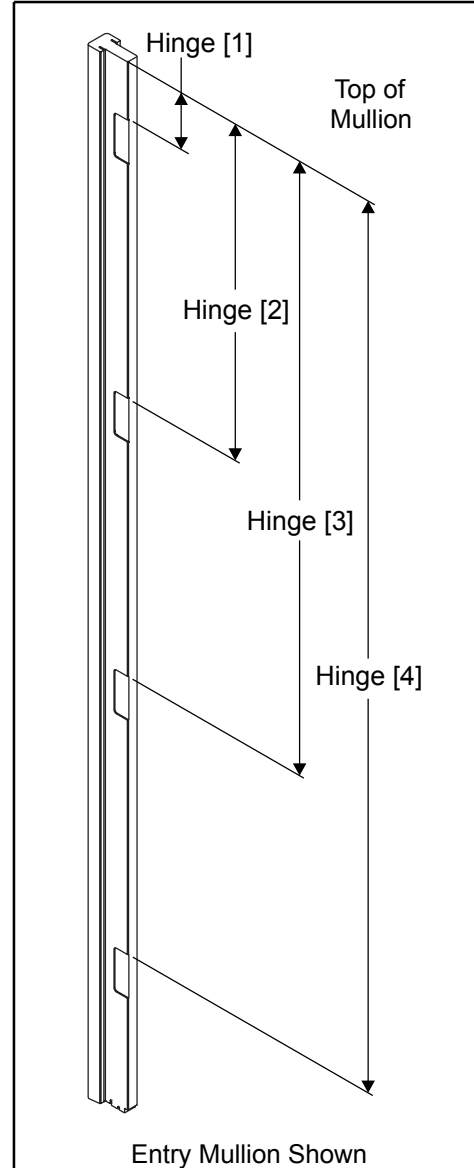
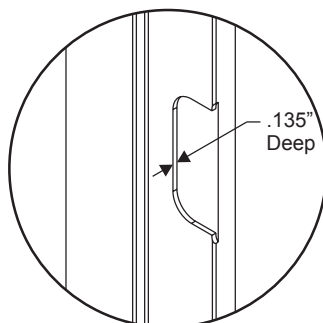
		HINGE MORTISE LOCATIONS				
		UNIT SIZE	HINGE 1	HINGE 2	HINGE 3	HINGE 4
INSWING	STANDARD HINGE	6/6	8.375	38.125	67.875	N/A
		6/8				
		7/0				
		8/0		33.375	58.875	
	ADJUSTABLE HINGE	6/6	8.650	37.900	67.150	N/A
		6/8				
		7/0				
		8/0	5.556	31.056	56.556	82.056



Standard Hinge

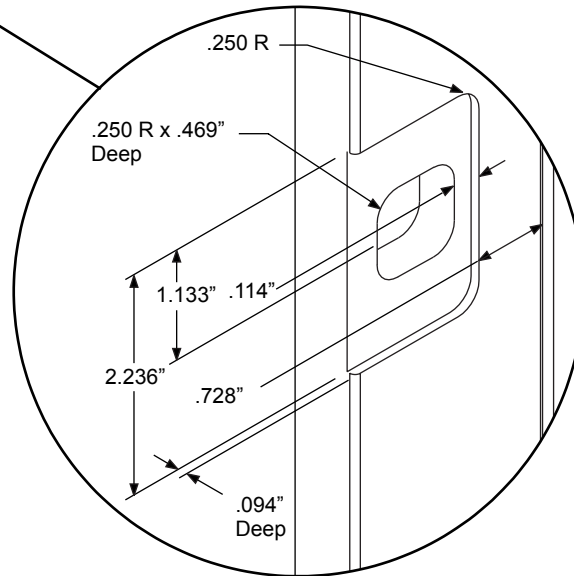
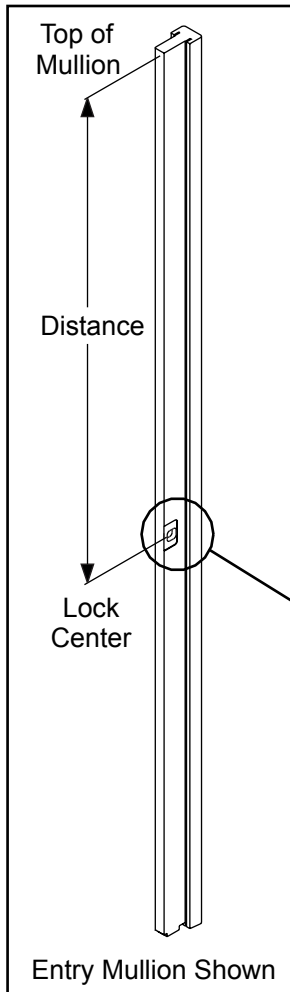


Adjustable Hinge

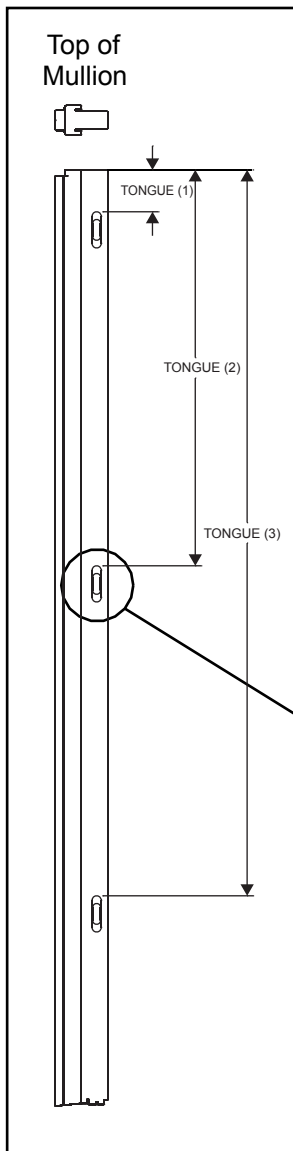


Standard Lock Mortise location

UNIT SIZE	STRIKE
6/6	44.094
6/8	
7/0	48.094
8/0	60.094



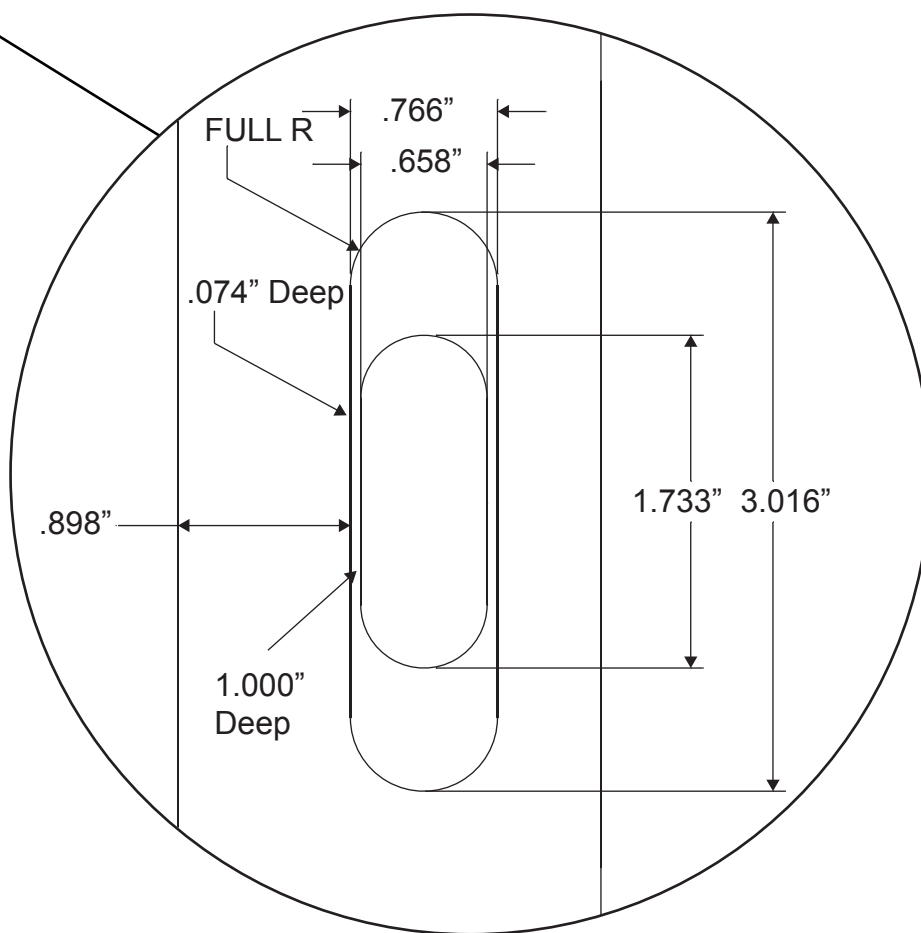
Frame Parts

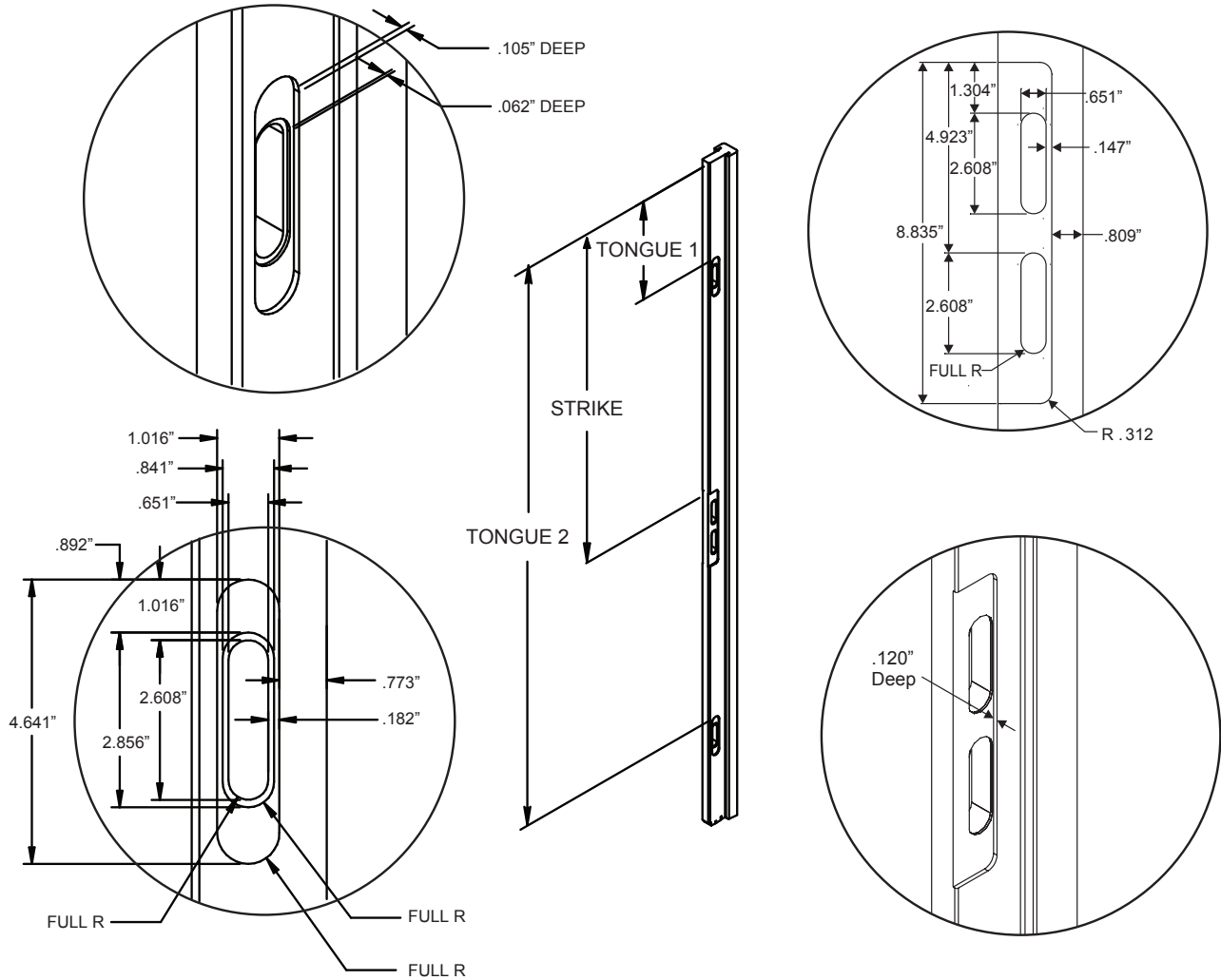


**Vented Sidelite Lock
Mortise Location**

VENTING SIDELITE MPLS				
	UNIT SIZE	TONGUE 1	TONGUE 2	TONGUE 3
UNDERSIZE	6/6	3.489	32.989	60.491
	6/8	3.286	32.786	60.288
	8/0	16.286	48.786	76.288

Frame Parts

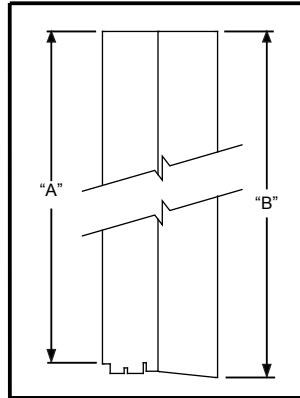




Frame Parts

Manual Tongue & Variable Height Lock Mortise Location

	UNIT SIZE	STRIKE	TONGUE 1	TONGUE 2
POCKET STRIKE	6/6	40.101"	11.836"	67.506"
	6/8	39.898"	11.836"	67.506"
	7/0	43.898"	15.836"	71.506"
	8/0	55.898"	10.188"	83.506"



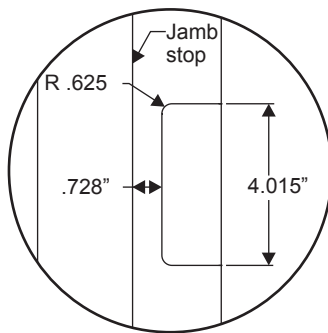
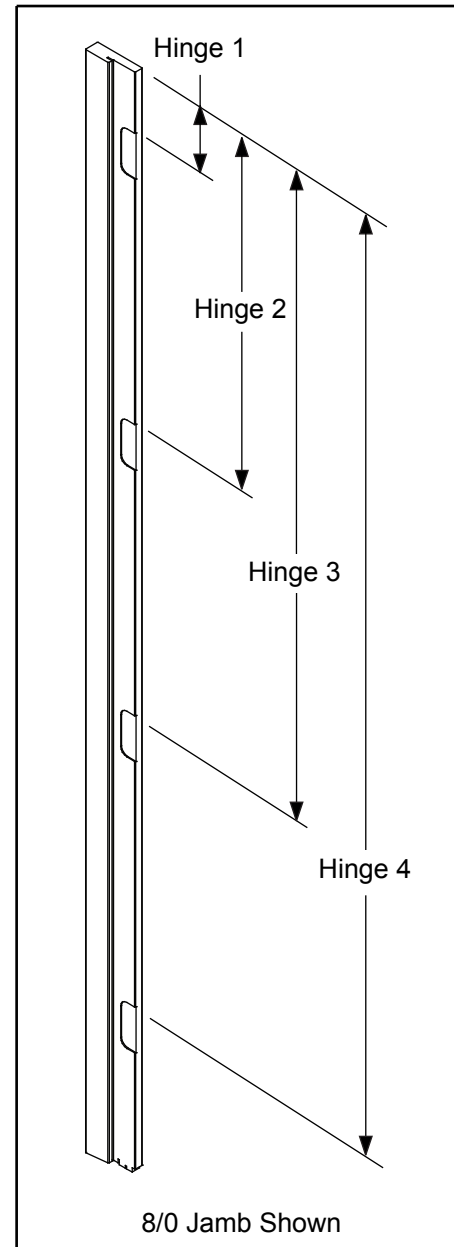
		SPREAD MULLION JAMB				
		UNIT SIZE	LENGTH "A"	"B"		
				4-9/16"	5-1/4"	6-9/16"
INSWING	UNDERSIZE	66 = 6/6	77.291	77.834	77.906	78.044
		68 = 6/8	79.636	80.179	80.251	80.389
		70 = 7/0	83.636	84.179	84.251	84.389
		80 = 8/0	95.636	96.179	96.251	96.389
	SILL/SILL GAIN	68 = 6/8	79.886	80.972	81.044	81.182
		80 = 8/0	95.886	96.972	97.044	97.182

Frame Parts

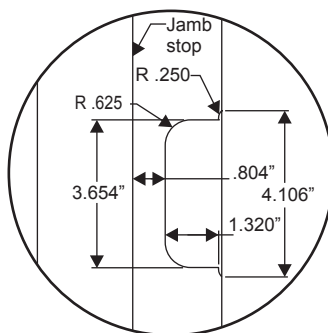
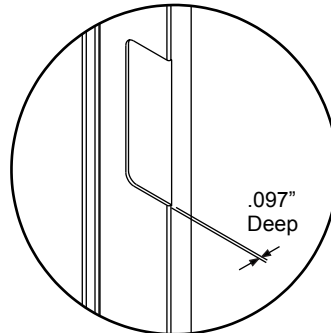
Spread Mullion Jambs

SPREAD MULLION HINGE MORTISE LOCATIONS					
	UNIT SIZE	HINGE [1]	HINGE [2]	HINGE [3]	HINGE [4]
STANDARD HINGE	6/6	8.375	38.125	67.875	N/A
	6/8				
	7/0				
	8/0				
ADJUSTABLE HINGE	6/6	8.650	37.900	67.150	N/A
	6/8				
	7/0				
	8/0		5.556	31.056	

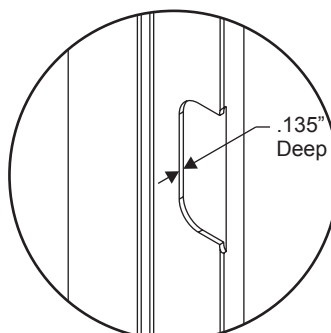
Frame Parts

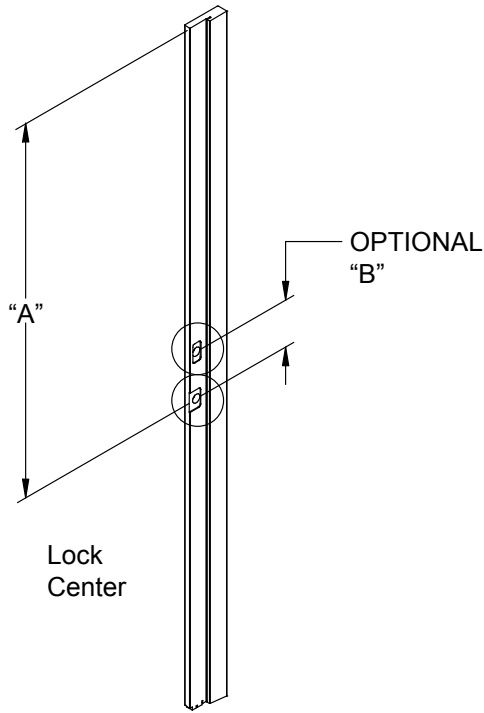


Standard Hinge



Adjustable Hinge

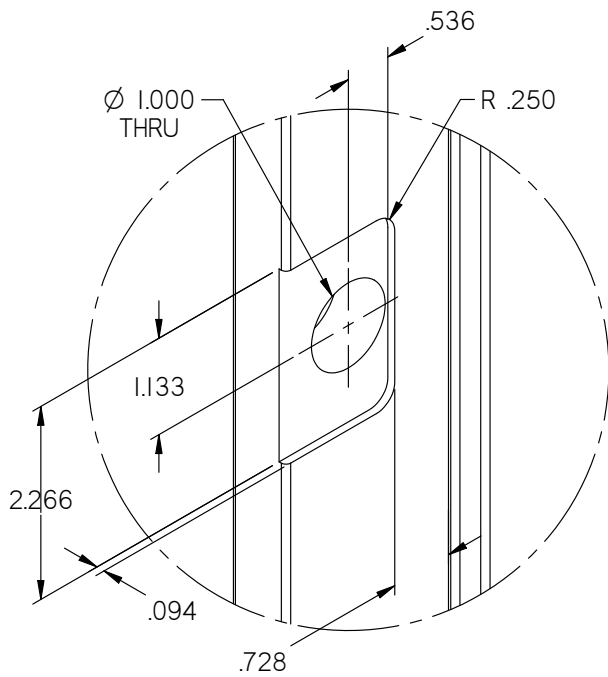




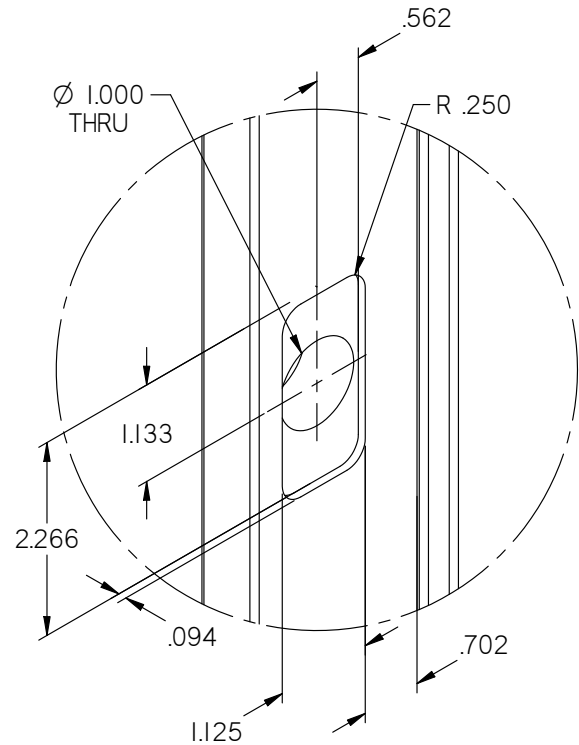
UNIT SIZE	"A"
6/6	44.094
6/8	
7/0	48.094
8/0	60.094

DOUBLE BORE CENTER TO CENTER	
CODE	"B"
J	N/A
K	12.000
L	5.500

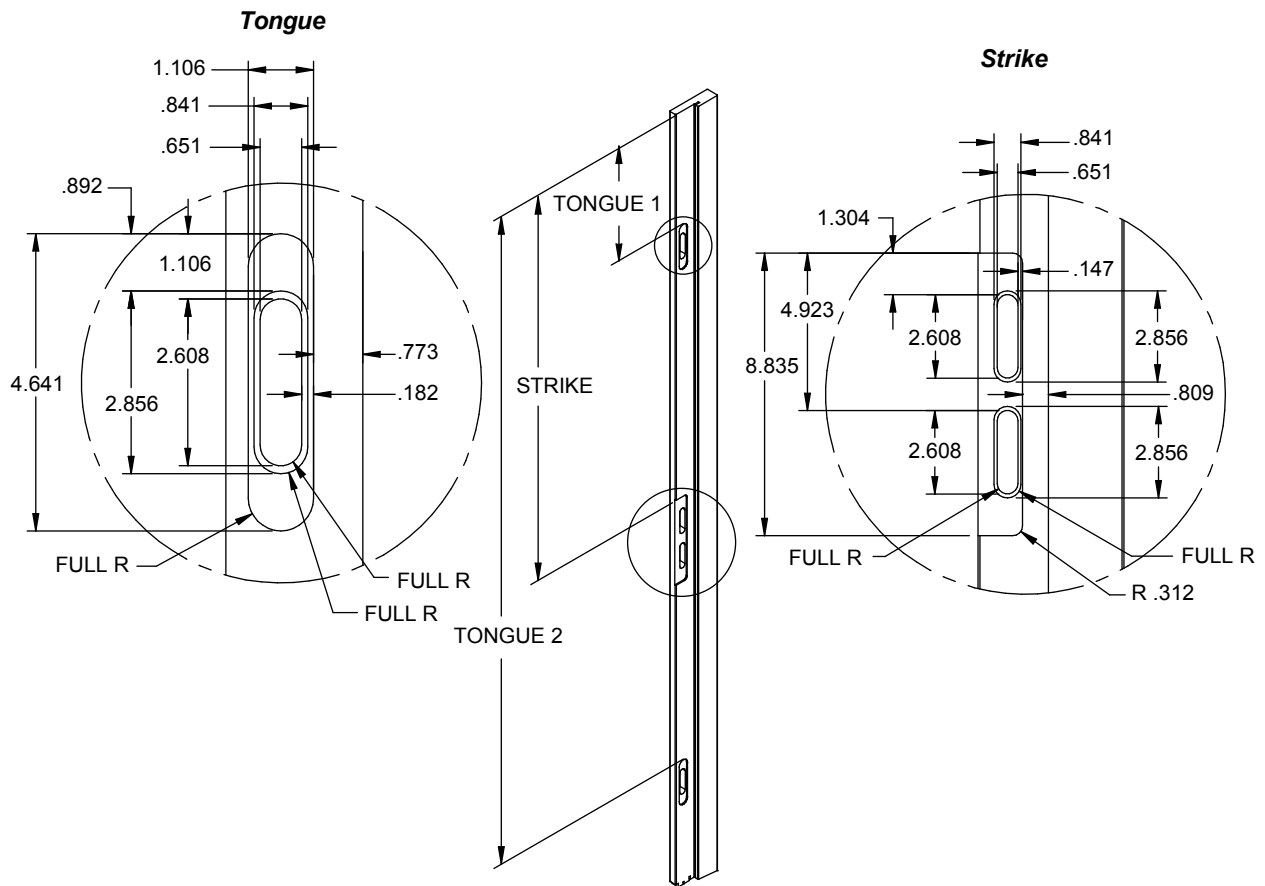
Frame Parts



LATCH MACHINING



OPTIONAL DEADBOLT MACHINING



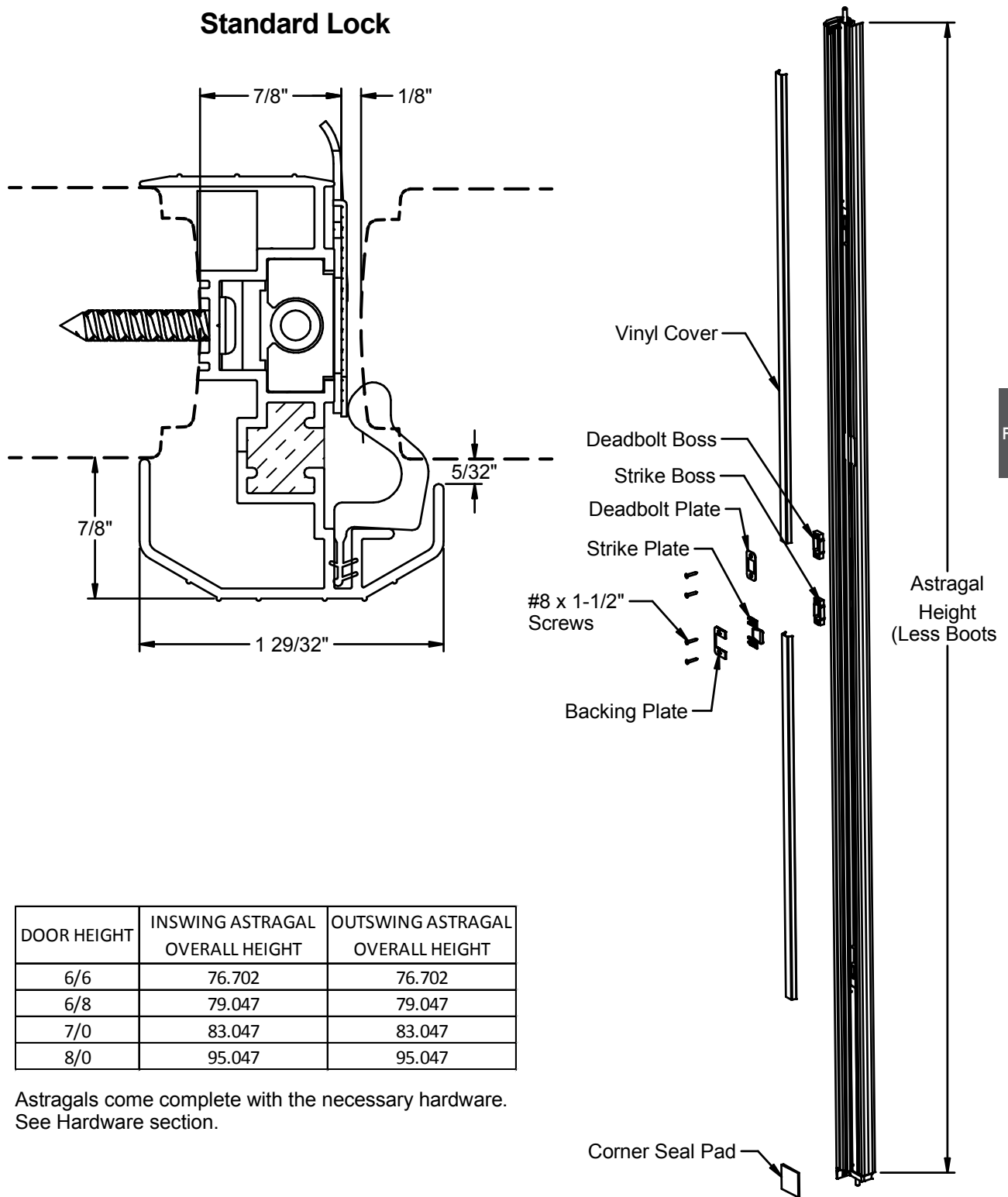
Frame Parts

Mark for Pocket Lock Mortises

**Manual Pocket - Side Jamb
Lock Mortise Locations
Spread Mullions**

	UNIT SIZE	STRIKE	TONGUE 1	TONGUE 2
POCKET STRIKE	6/6	40.101	11.835	67.504
	6/8	39.898	11.632	67.301
	7/0	43.898	15.632	71.301
	8/0	55.898	9.914	83.301

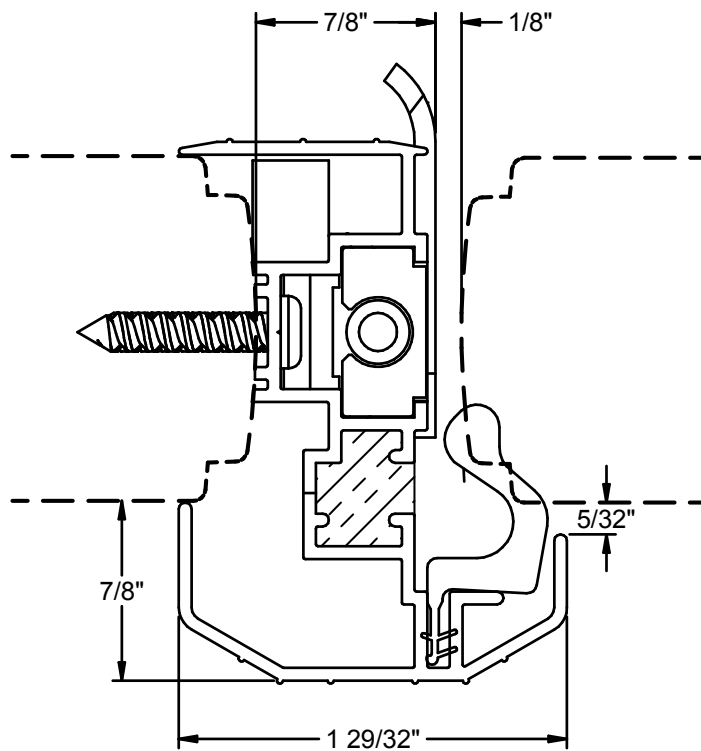
Standard Lock



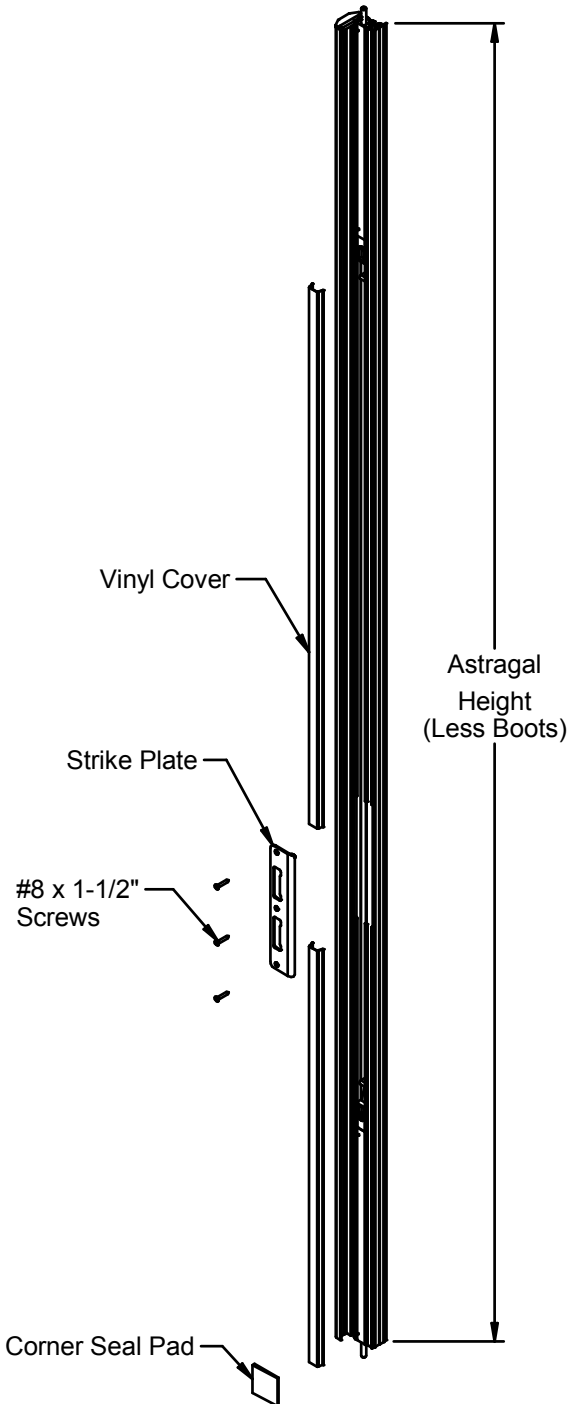
DOOR HEIGHT	INSWING ASTRAGAL OVERALL HEIGHT	OUTSWING ASTRAGAL OVERALL HEIGHT
6/6	76.702	76.702
6/8	79.047	79.047
7/0	83.047	83.047
8/0	95.047	95.047

Astragals come complete with the necessary hardware. See Hardware section.

Multi-Point Lock Manual Shootbolt



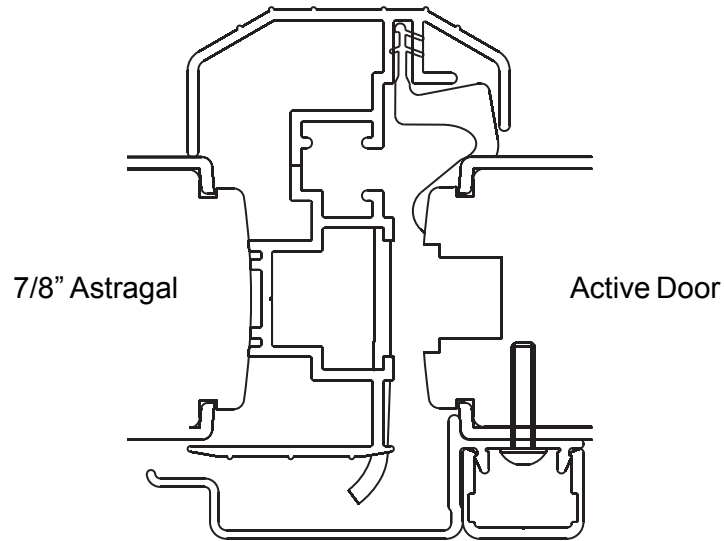
Frame Parts



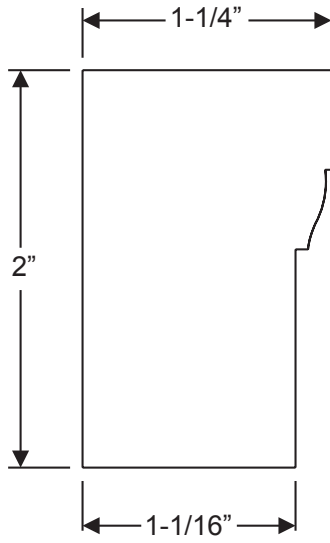
DOOR HEIGHT	INSWING ASTRAGAL OVERALL HEIGHT	OUTSWING ASTRAGAL OVERALL HEIGHT
6/6	76.702	76.702
6/8	79.047	79.047
7/0	83.047	83.047
8/0	95.047	95.047

Astragals come complete with the necessary hardware.
See Hardware section.

**7/8" Aluminum Outswing
Astragal Security Cover**



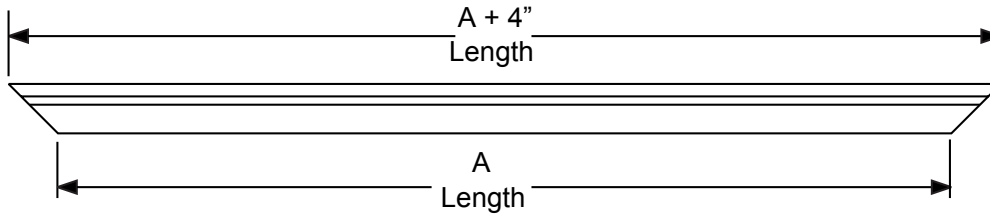
Frame Parts



***Brickmould - Wood and Rot-Resistant
(WM180 Profile)***

Frame Parts

Head Length

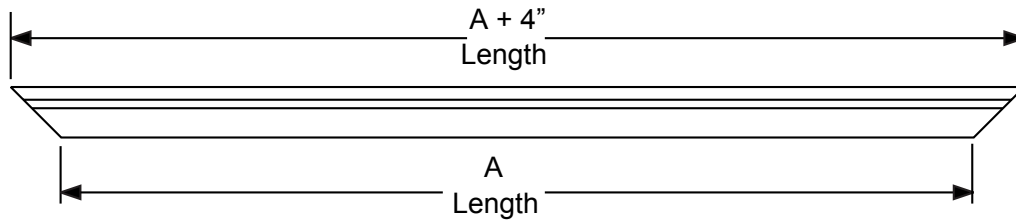


		STANDARD LENGTHS	UNIT SIZE	INSWING "A"	OUTSWING "A"
			SINGLE		2/4
FRENCH (7/8" ASTRAGAL)		STANDARD LENGTHS	2/6	30.000	30.500
			2/8	32.000	32.500
			2/10	34.000	34.500
			3/0	36.000	36.500
			3/6	42.000	42.500
DOUBLE	STANDARD MULLION	STANDARD LENGTHS	4/0	48.718	49.218
			4/8	56.718	57.218
			5/0	60.718	61.218
			5/4	64.718	65.218
			5/8	68.718	69.218
DOUBLE PLUS M.E.U.	STANDARD MULLION	STANDARD LENGTHS	6/0	72.718	73.218
			4/8	57.000	57.500
			5/0	61.000	61.500
			5/4	65.000	65.500
			5/8	69.000	69.500
TRIPLE	STANDARD MULLION	STANDARD LENGTHS	6/0	73.000	73.500
			4/8 + 2/4	86.500	87.000
			5/0 + 2/6	92.500	93.000
			5/4 + 2/8	98.500	99.000
			5/8 + 2/10	104.500	105.000
			6/0 + 3/0	110.500	111.000
			7/0	86.000	86.500
			7/6	92.000	92.500
			8/0	98.000	98.500
			8/6	104.000	104.500
			9/0	110.000	110.500

		STANDARD LENGTHS	UNIT SIZE	INSWING "A"	OUTSWING "A"
			SINGLE WITH 1 VENTING SIDELITE	STANDARD MULLION	STANDARD LENGTHS
			2/4 W/1-14"	43.721	N/A
			2/6 W/1-12"	43.721	N/A
			2/6 W/1-14"	45.721	N/A
			2/8 W/1-12"	45.721	N/A
			2/8 W/1-14"	47.721	N/A
			2/10 W/1-12"	47.721	N/A
			2/10 W/1-14"	49.721	N/A
			3/0 W/1-12"	49.721	N/A
			3/0 W/1-14"	51.721	N/A
			SINGLE UNIT WITH TWO VENTING SIDELITES	WIDE MULLION	STANDARD LENGTHS
2/4 W/1-14"	59.408	N/A			
2/6 W/1-12"	57.408	N/A			
2/6 W/1-14"	61.408	N/A			
2/8 W/1-12"	59.408	N/A			
2/8 W/1-14"	63.408	N/A			
2/10 W/1-12"	61.408	N/A			
FRENCH (7/8" ASTRAGAL) UNIT WITH VENTING SIDELITES	WIDE MULLION	STANDARD LENGTHS	2/10 W/1-14"	65.408	N/A
			3/0 W/1-12"	63.408	N/A
			3/0 W/1-14"	67.408	N/A
			4/8 W/2-12"	84.126	N/A
			4/8 W/2-14"	88.126	N/A
			5/0 W/2-12"	88.126	N/A
			5/0 W/2-14"	92.126	N/A
			5/4 W/2-12"	92.126	N/A
			5/4 W/2-14"	96.126	N/A
			5/8 W/2-12"	96.126	N/A
			5/8 W/2-14"	100.126	N/A
			6/0 W/2-12"	100.126	N/A
			6/0 W/2-14"	104.126	N/A

Frame Parts

Head Length

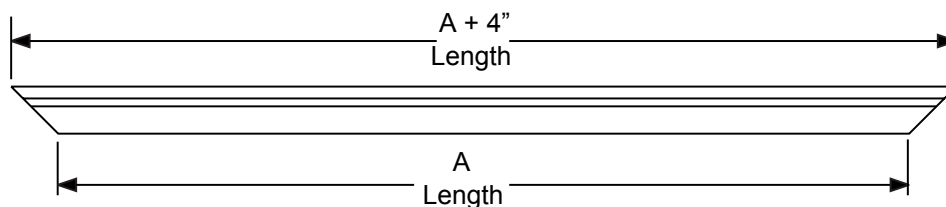


Frame Parts

			UNIT SIZE	INSWING "A"	OUTSWING "A"
SINGLE WITH 1 SIDELITE	STANDARD MULLION	STANDARD	2/4 W/1 12"	41.000	41.500
			2/4 W/1 14"	43.000	43.500
			2/6 W/1 12"	43.000	43.500
			2/6 W/1 14"	45.000	45.500
			2/8 W/1 12"	45.000	45.500
			2/8 W/1 14"	47.000	47.500
			2/10 W/1 12"	47.000	47.500
			2/10 W/1 14"	49.000	49.500
			3/0 W/1 12"	49.000	49.500
			3/0 W/1 14"	51.000	51.500
			3/6 W/1 12"	55.000	55.500
			3/6 W/1 14"	57.000	57.500
	BOXED/WIDE MULLION	STANDARD	2/4 W/1 12"	41.500	42.000
			2/4 W/1 14"	43.500	44.000
			2/6 W/1 12"	43.500	44.000
			2/6 W/1 14"	45.500	46.000
			2/8 W/1 12"	45.500	46.000
			2/8 W/1 14"	47.500	48.000
			2/10 W/1 12"	47.500	48.000
			2/10 W/1 14"	49.500	50.000
			3/0 W/1 12"	49.500	50.000
			3/0 W/1 14"	51.500	52.000
3/6 W/1 12"			55.500	56.000	
3/6 W/1 14"			57.500	58.000	
SINGLE WITH 2 SIDELITES	STANDARD MULLION	STANDARD	2/4 W/2 12"	54.000	54.500
			2/4 W/2 14"	58.000	58.500
			2/6 W/2 12"	56.000	56.500
			2/6 W/2 14"	60.000	60.500
			2/8 W/2 12"	58.000	58.500
			2/8 W/2 14"	62.000	62.500
			2/10 W/2 12"	60.000	60.500
			2/10 W/2 14"	64.000	64.500
			3/0 W/2 12"	62.000	62.500
			3/0 W/2 14"	66.000	66.500
			3/6 W/2 12"	68.000	68.500
			3/6 W/2 14"	72.000	72.500
	STANDARD MULLION	STANDARD	2/4 W/1 12"	55.000	55.500
			2/4 W/1 14"	59.000	59.500
			2/6 W/1 12"	57.000	57.500
			2/6 W/1 14"	61.000	61.500
			2/8 W/1 12"	59.000	59.500
			2/8 W/1 14"	63.000	63.500
			2/10 W/1 12"	61.000	61.500
			2/10 W/1 14"	65.000	65.500
			3/0 W/1 12"	63.000	63.500
			3/0 W/1 14"	67.000	67.500
			3/6 W/1 12"	69.000	69.500

			UNIT SIZE	INSWING "A"	OUTSWING "A"
FRENCH WITH 2 SIDELITES (7/8" ASTRAGAL)	WIDE MULLION	STANDARD LENGTHS	6/0 W/2-10"	95.718	96.218
			6/0 W/2-12"	99.718	100.218
			6/0 W/2-14"	103.718	104.218

Head Length

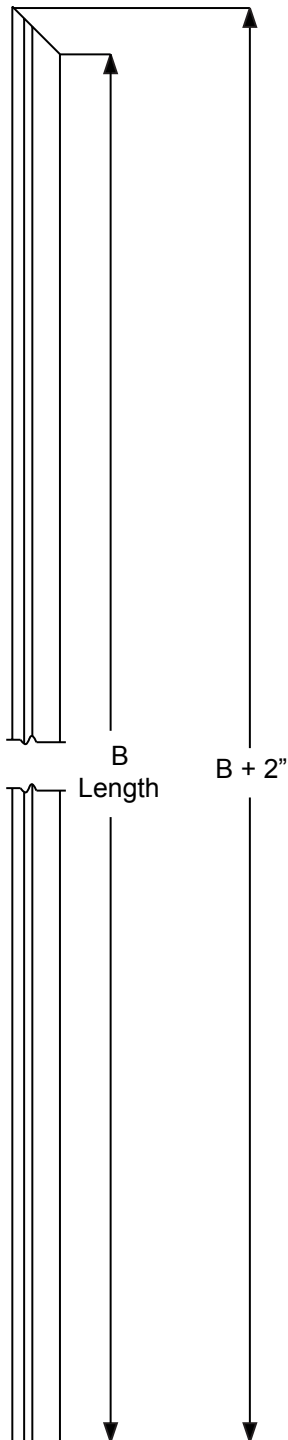


	UNIT SIZE	INSWING
	"A"	
SINGLE WITH ONE SIDELITE	3/0 W/1 10" SPREAD 0.000"	47.500
	3/0 W/1 10" SPREAD 0.250"	47.750
	3/0 W/1 10" SPREAD 0.500"	48.000
	3/0 W/1 10" SPREAD 0.750"	48.250
	3/0 W/1 10" SPREAD 1.000"	48.500
	3/0 W/1 10" SPREAD 1.250"	48.750
	3/0 W/1 10" SPREAD 1.500"	49.000
	3/0 W/1 10" SPREAD 1.750"	49.250
	3/0 W/1 10" SPREAD 2.000"	49.500
	3/0 W/1 10" SPREAD 2.250"	49.750
	3/0 W/1 10" SPREAD 2.500"	50.000
	3/0 W/1 10" SPREAD 2.750"	50.250
	3/0 W/1 10" SPREAD 3.000"	50.500
	3/0 W/1 12" SPREAD 0.000"	49.500
	3/0 W/1 12" SPREAD 0.250"	49.750
	3/0 W/1 12" SPREAD 0.500"	50.000
	3/0 W/1 12" SPREAD 0.750"	50.250
	3/0 W/1 12" SPREAD 1.000"	50.500
	3/0 W/1 12" SPREAD 1.250"	50.750
	3/0 W/1 12" SPREAD 1.500"	51.000
	3/0 W/1 12" SPREAD 1.750"	51.250
	3/0 W/1 12" SPREAD 2.000"	51.500
	3/0 W/1 12" SPREAD 2.250"	51.750
	3/0 W/1 12" SPREAD 2.500"	52.000
	3/0 W/1 12" SPREAD 2.750"	52.250
	3/0 W/1 12" SPREAD 3.000"	52.500
	3/0 W/1 14" SPREAD 0.000"	51.500
	3/0 W/1 14" SPREAD 0.250"	51.750
	3/0 W/1 14" SPREAD 0.500"	52.000
	3/0 W/1 14" SPREAD 0.750"	52.250
	3/0 W/1 14" SPREAD 1.000"	52.500
	3/0 W/1 14" SPREAD 1.250"	52.750
3/0 W/1 14" SPREAD 1.500"	53.000	
3/0 W/1 14" SPREAD 1.750"	53.250	
3/0 W/1 14" SPREAD 2.000"	53.500	
3/0 W/1 14" SPREAD 2.250"	53.750	
3/0 W/1 14" SPREAD 2.500"	54.000	
3/0 W/1 14" SPREAD 2.750"	54.250	
3/0 W/1 14" SPREAD 3.000"	54.500	

	UNIT SIZE	INSWING
	"A"	
SINGLE WITH TWO SIDELITES	3/0 W/2 10" SPREAD 0.000"	59.000
	3/0 W/2 10" SPREAD 0.250"	59.500
	3/0 W/2 10" SPREAD 0.500"	60.000
	3/0 W/2 10" SPREAD 0.750"	60.500
	3/0 W/2 10" SPREAD 1.000"	61.000
	3/0 W/2 10" SPREAD 1.250"	61.500
	3/0 W/2 10" SPREAD 1.500"	62.000
	3/0 W/2 10" SPREAD 1.750"	62.500
	3/0 W/2 10" SPREAD 2.000"	63.000
	3/0 W/2 10" SPREAD 2.250"	63.500
	3/0 W/2 10" SPREAD 2.500"	64.000
	3/0 W/2 10" SPREAD 2.750"	64.500
	3/0 W/2 10" SPREAD 3.000"	65.000
	3/0 W/2 12" SPREAD 0.000"	63.000
	3/0 W/2 12" SPREAD 0.250"	63.500
	3/0 W/2 12" SPREAD 0.500"	64.000
	3/0 W/2 12" SPREAD 0.750"	64.500
	3/0 W/2 12" SPREAD 1.000"	65.000
	3/0 W/2 12" SPREAD 1.250"	65.500
	3/0 W/2 12" SPREAD 1.500"	66.000
	3/0 W/2 12" SPREAD 1.750"	66.500
	3/0 W/2 12" SPREAD 2.000"	67.000
	3/0 W/2 12" SPREAD 2.250"	67.500
	3/0 W/2 12" SPREAD 2.500"	68.000
	3/0 W/2 12" SPREAD 2.750"	68.500
	3/0 W/2 12" SPREAD 3.000"	69.000
	3/0 W/2 14" SPREAD 0.000"	67.000
	3/0 W/2 14" SPREAD 0.250"	67.500
	3/0 W/2 14" SPREAD 0.500"	68.000
	3/0 W/2 14" SPREAD 0.750"	68.500
	3/0 W/2 14" SPREAD 1.000"	69.000
	3/0 W/2 14" SPREAD 1.250"	69.500
3/0 W/2 14" SPREAD 1.500"	70.000	
3/0 W/2 14" SPREAD 1.750"	70.500	
3/0 W/2 14" SPREAD 2.000"	71.000	
3/0 W/2 14" SPREAD 2.250"	71.500	
3/0 W/2 14" SPREAD 2.500"	72.000	
3/0 W/2 14" SPREAD 2.750"	72.500	
3/0 W/2 14" SPREAD 3.000"	73.000	

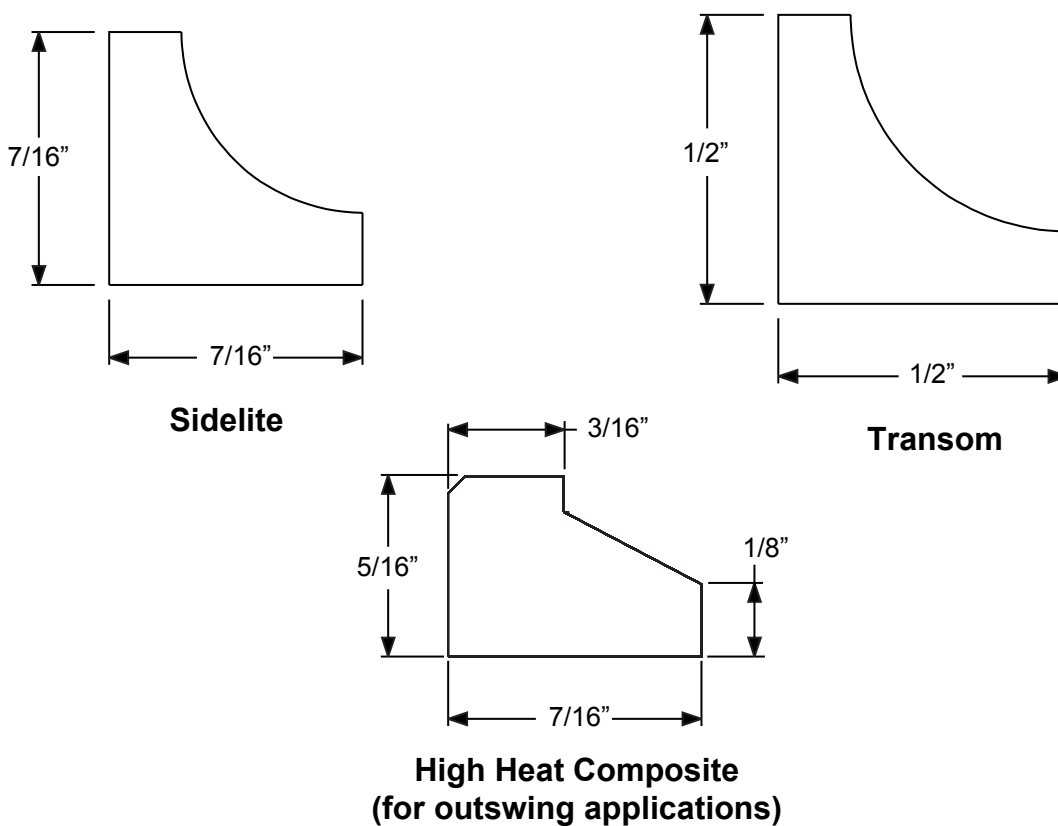
Frame Parts

Side Length



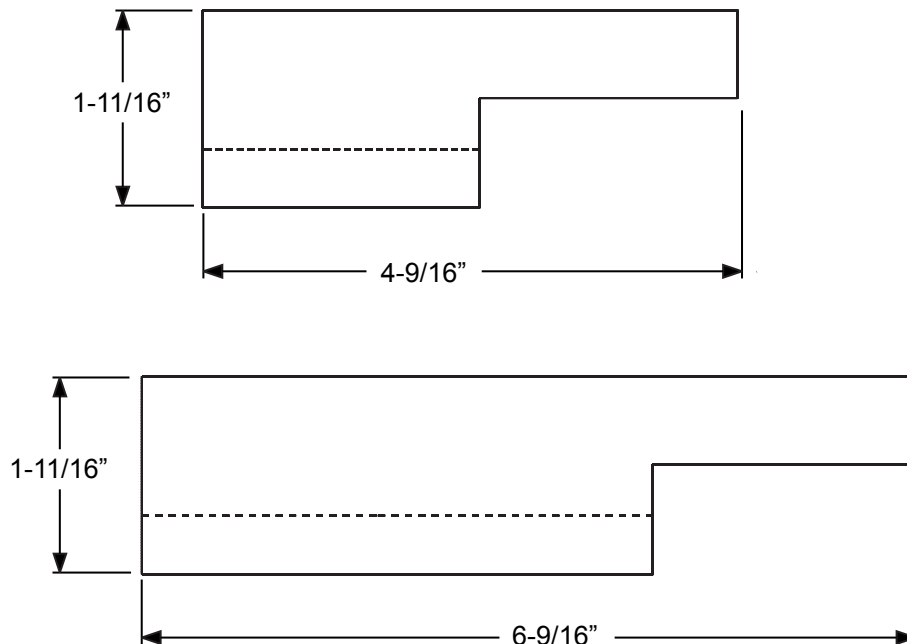
Frame Parts

	Unit Size	"B"
Inswing	6/6	78.53
	6/8	80.875
	7/0	84.875
	8/0	96.875
Outswing (Composite)	6/6	78.121
	6/8	80.466
	7/0	84.466
	8/0	96.466
Outswing (Aluminum)	6/6	77.546
	6/8	79.891
	7/0	83.891
	8/0	95.891

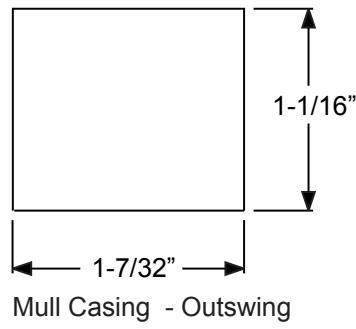
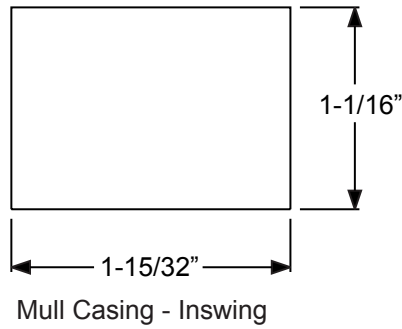


Frame Parts

Head Jamb Seal Pad
4-9/16" and 6-9/16" Jambs



Mull Casing

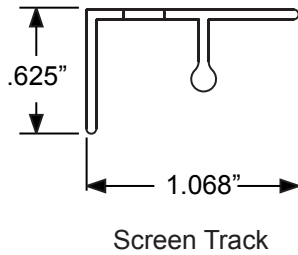


Length: Standard = 81-1/4"
Transom = 95-3/4"
8/0 Height = 98"

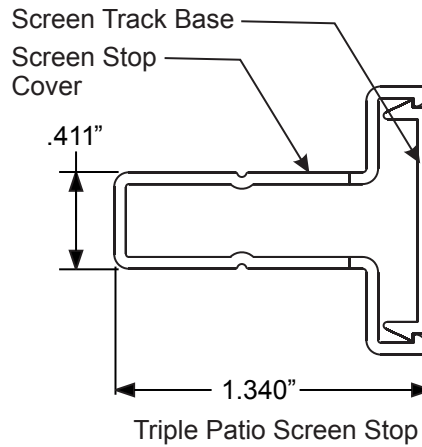
Wood Mull Casing

Frame Parts

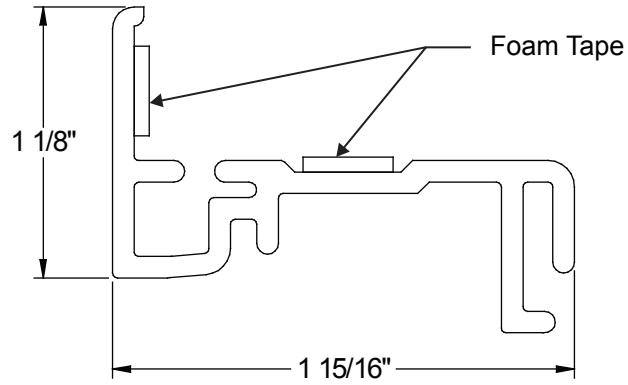
Screen Track and Stop



	Size	Length
Standard Mullion	4/8	56.938
	5/0	60.938
	5/4	64.938
	5/8	68.938
	6/0	72.938
Wide Mullion	4/8	57.438
	5/0	61.438
	5/4	65.438
	5/8	69.438
	6/0	73.438

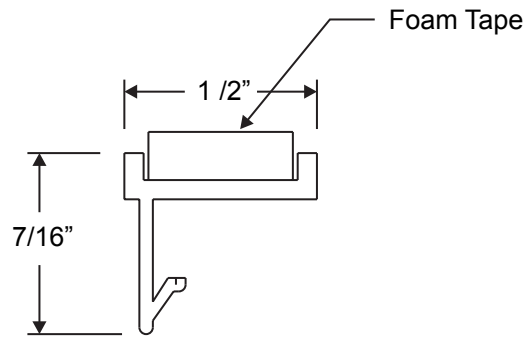


	Base Length	Cover Length
6/6	77.141	77.906
6/8	79.485	80.250
7/0	83.485	84.250
8/0	95.485	96.250



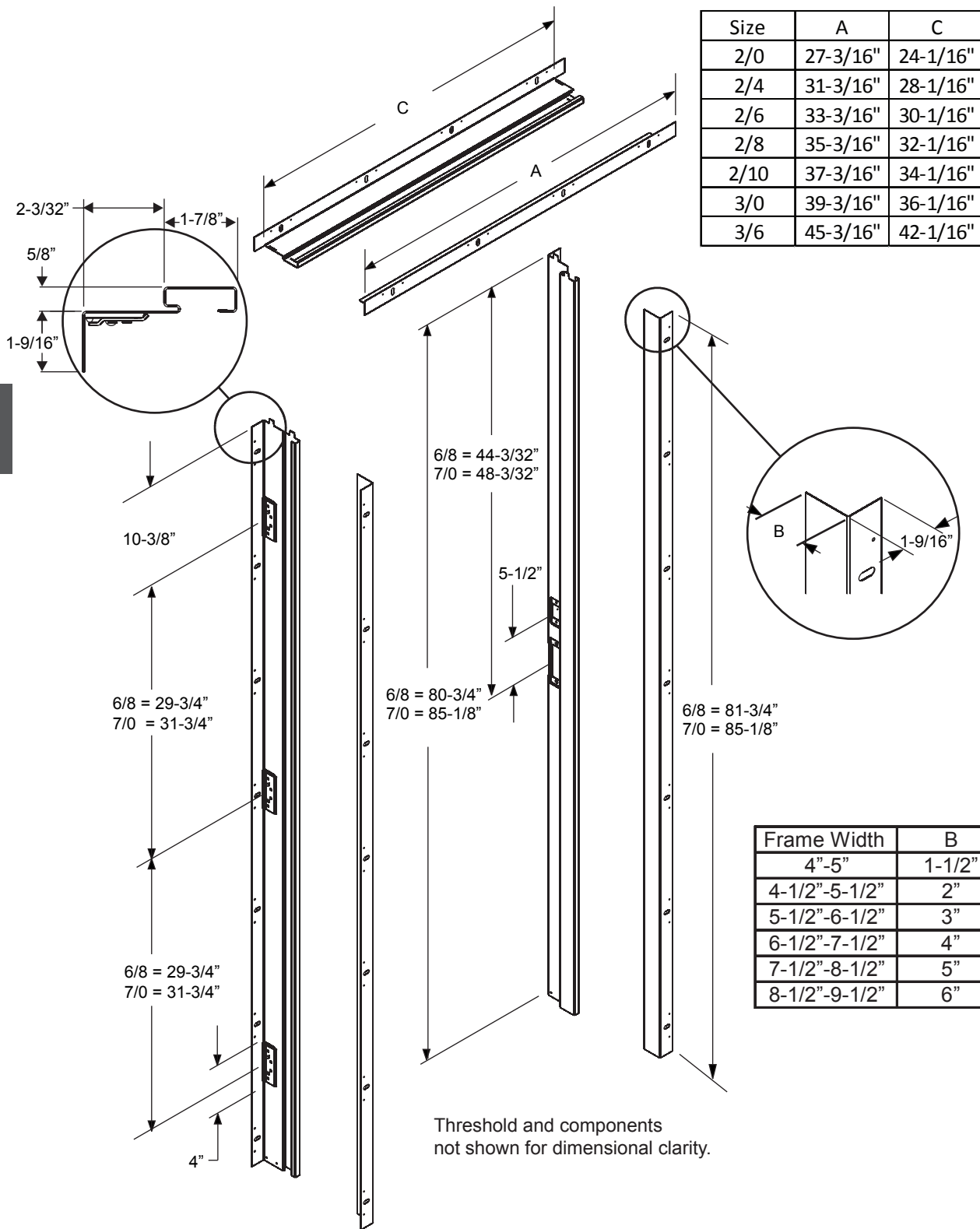
**Bottom Trim
Length = 37''**

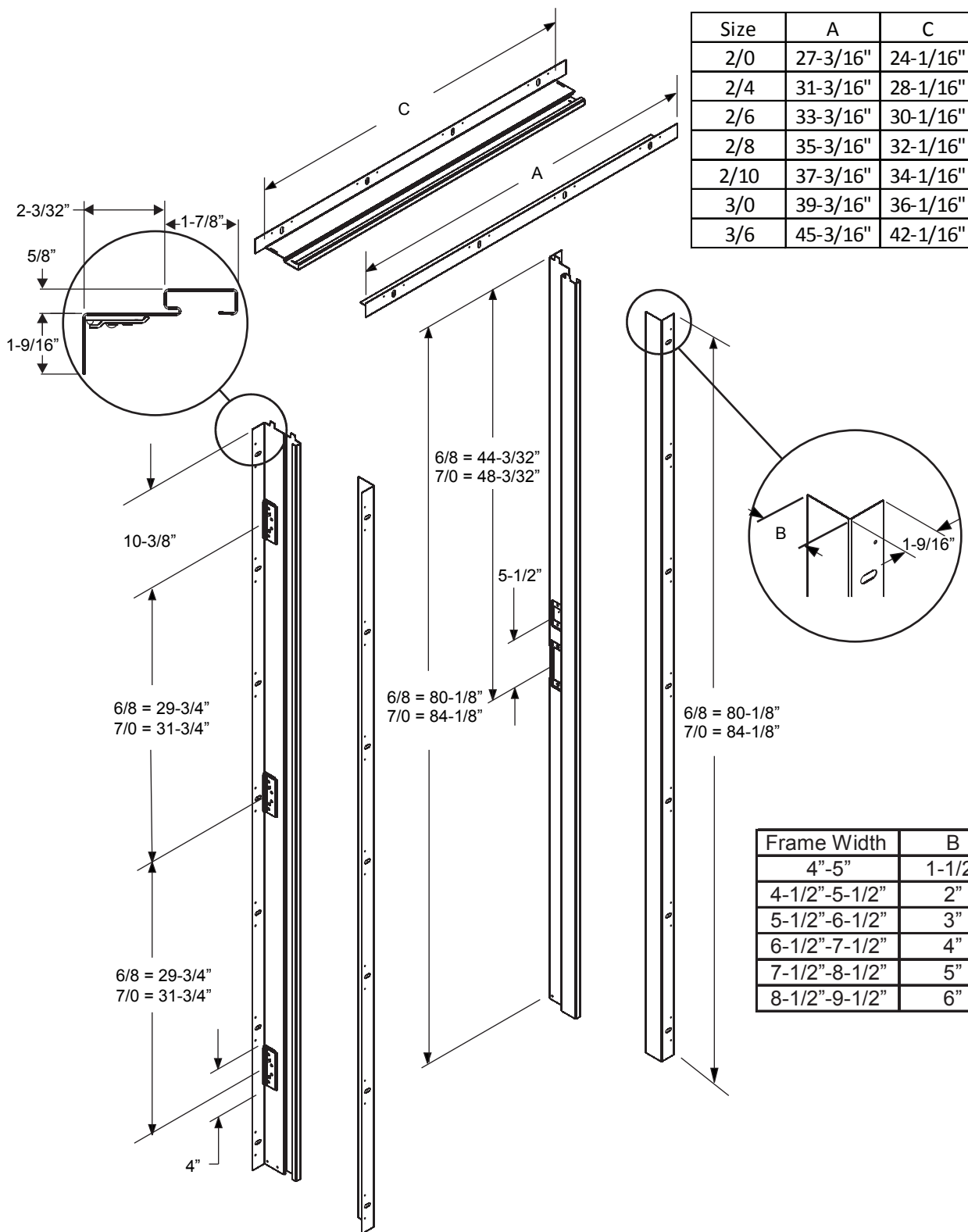
Frame Parts



**Direct Set Sidelite Trim Kit
Length = 80'' or 96''**

Standard Adjusta-Fit[®] 2 - Inswing





Frame Parts

Standard Adjusta-Fit[®] 2 - No Sill

