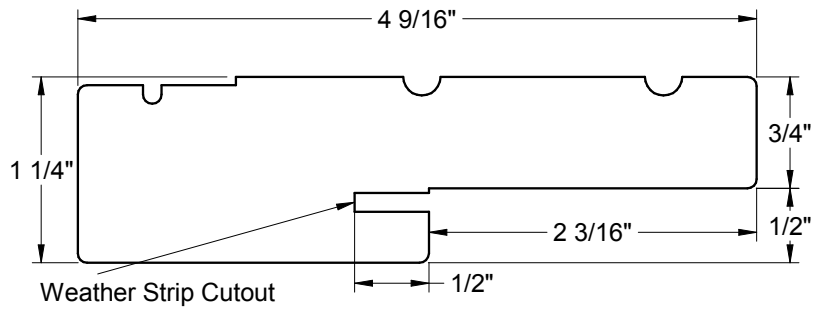
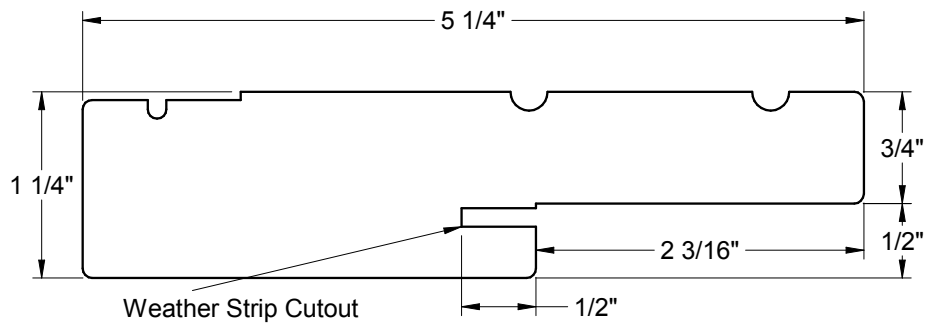


Jamb Profiles	6.3
Head Jamb - Standard.....	6.4
Head Jamb - Arch and Radius.....	6.5
Head Jamb - Continuous with 1 Sidelite and Double Doors	6.6
Head Jamb - Triple and Single with 2 Sidelites	6.7
Head Jamb - French Continuous with 2 Sidelites	6.8
Head Jamb - Continuous with 1 or 2 Venting Sidelites.....	6.9
Head Jamb - Spread Mullion	6.10
Head Jamb - French Multipoint.....	6.11
Head Jamb - French Multipoint with 2 Venting Sidelites	6.12
Side Jamb.....	6.13
Mullions	6.19
Spread Mullion Jamb	6.25
Stainable & Standard Aluminum 7/8" Astragal.....	6.29
Coastal Astragal	6.31
Astragal - Outswing Security Cover	6.33
Brickmould.....	6.34
Cove Molding & Head Seal Pad.....	6.39
Mull Casing	6.40
Direct Set Sidelite	6.41
Standard Adjusta-Fit® 2 - Inswing	6.42
Standard Adjusta-Fit® 2 Public Access - Inswing/Outswing.....	6.43
Standard Adjusta-Fit® 2 - No Sill	6.44

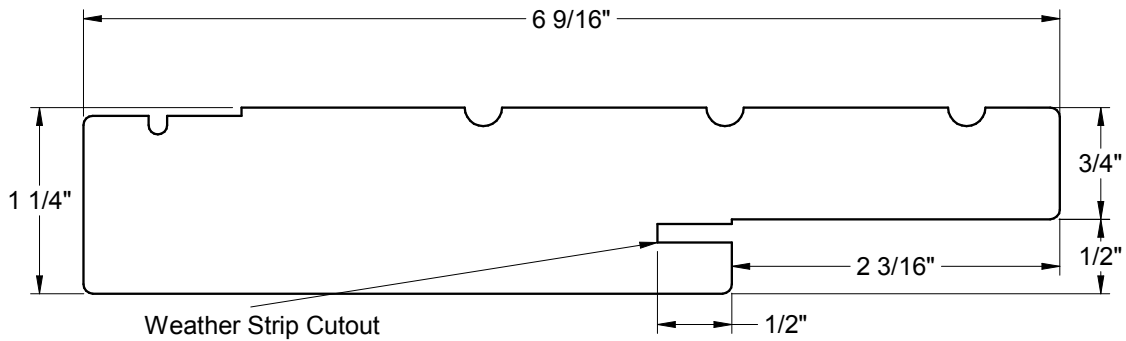
Frame Parts



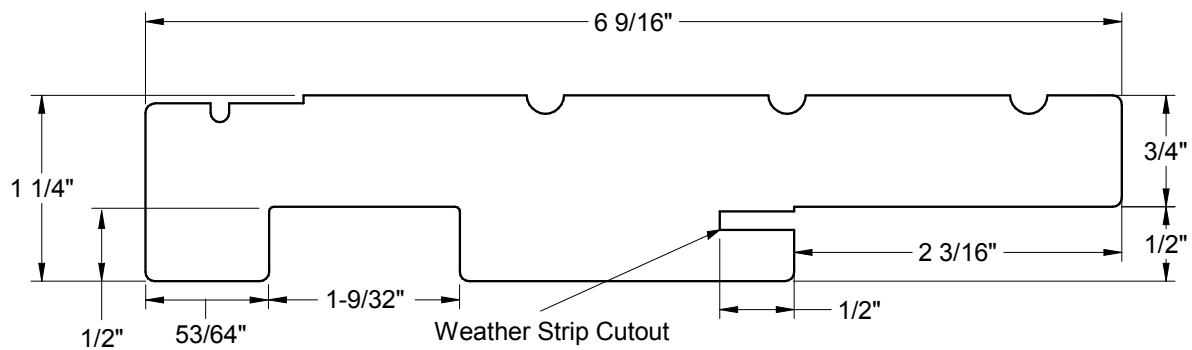
4-9/16" Jamb



5-1/4" Jamb



6-9/16" Jamb



**6-9/16" Patio Jamb
(for sliding screens)**

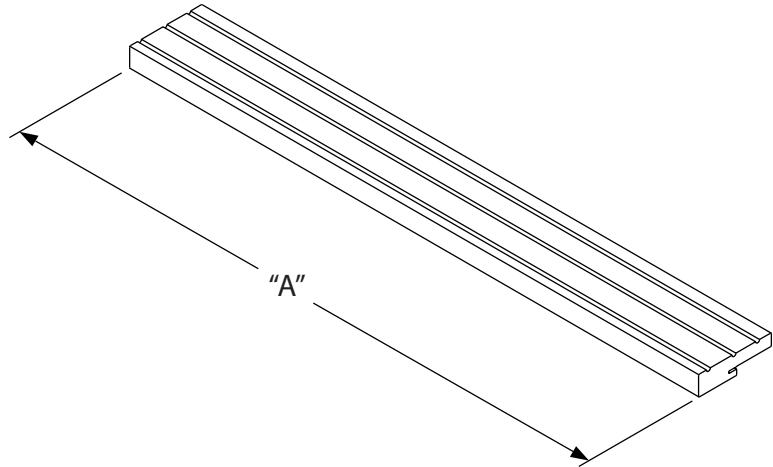
Frame Parts

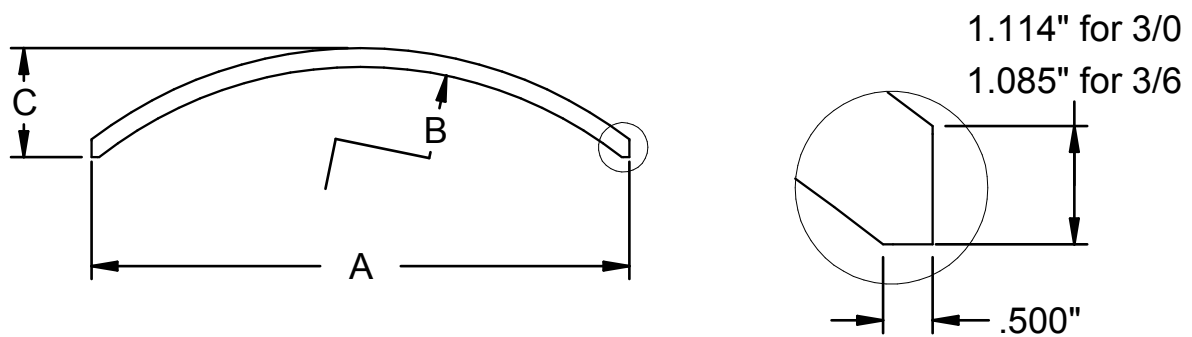
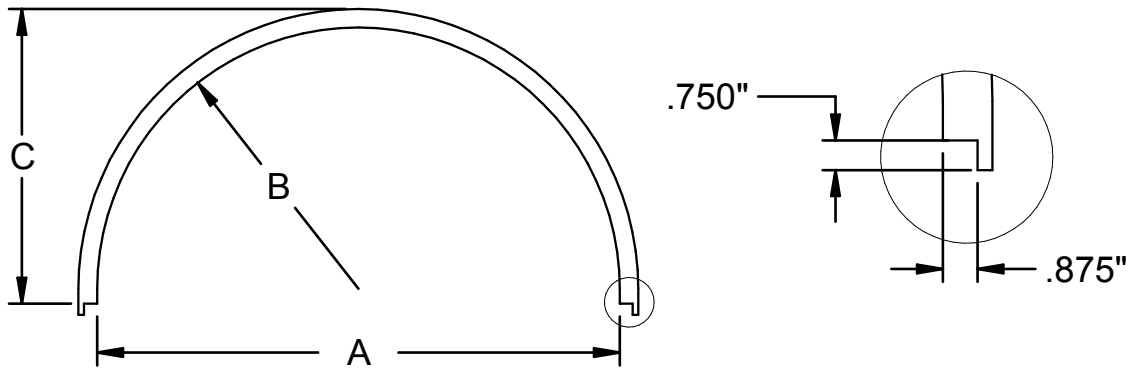
Head Jambs - Standard

UNIT SIZE	LENGTH "A"
10" SIDELITE	10.000
12" SIDELITE	12.000
14" SIDELITE	14.000
2/0 SIDELITE	24.000
2/0 DOOR	24.156
2/4 DOOR	28.156
2/6 DOOR	30.156
2/8 DOOR	32.156
2/10 DOOR	34.156
3/0 DOOR	36.156
3/6 DOOR	42.156
4/0 FRENCH 7/8" ASTRAGAL	49.062
4/8 FRENCH 7/8" ASTRAGAL	57.062
5/0 FRENCH 7/8" ASTRAGAL	61.062
5/4 FRENCH 7/8" ASTRAGAL	65.062
5/8 FRENCH 7/8" ASTRAGAL	69.062
6/0 FRENCH 7/8" ASTRAGAL	73.062
7/0 FRENCH 7/8" ASTRAGAL	85.062

Frame Parts

Head Jamb



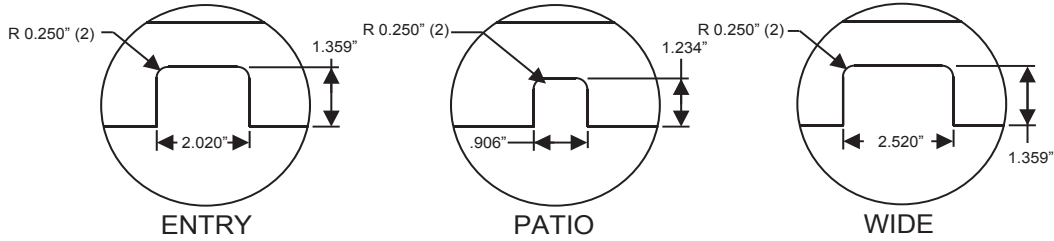
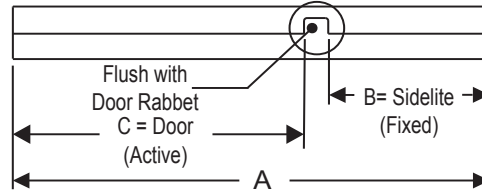


Frame Parts

UNIT SIZE	LENGTH "A"	RADIUS "B"	HEIGHT "C"
3/0 RADIUS	35.160"	17.580"	19.830"
3/6 RADIUS	41.156"	20.578"	22.828"
3/0 ARCH	36.156"	28.486"	7.320"
3/6 ARCH	42.156"	39.751"	6.991"

Head Jamb - Continuous with 1 Sidelite and Double Doors

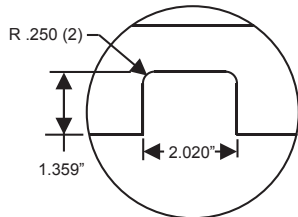
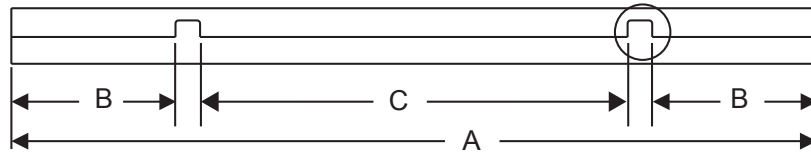
Inswing Active Left Shown



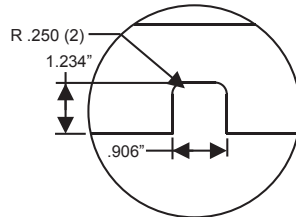
Frame Parts

CONTINUOUS WITH 1 - SIDELITE									
	ENTRY MULLION			PATIO MULLION			WIDE MULLION		
	A	B	C	A	B	C	A	B	C
2/4 W/I-10" SL	39.156	9.490	27.646	39.156	10.047	28.203	39.656	9.490	27.646
2/4 W/I-12" SL	41.156	11.490		41.156	12.047		41.656	11.490	
2/4 W/I-14" SL	43.156	13.490		43.156	14.047		43.656	13.490	
2/6 W/I-10" SL	41.156	9.490	29.646	41.156	10.047	30.203	41.656	9.490	29.646
2/6 W/I-12" SL	43.156	11.490		43.156	12.047		43.656	11.490	
2/6 W/I-14" SL	45.156	13.490		45.156	14.047		45.656	13.490	
2/8 W/I-10" SL	43.156	9.490	31.646	43.156	10.047	32.203	43.656	9.490	31.646
2/8 W/I-12" SL	45.156	11.490		45.156	12.047		45.656	11.490	
2/8 W/I-14" SL	47.156	13.490		47.156	14.047		47.656	13.490	
2/10 W/I-10" SL	45.156	9.490	33.646	45.156	10.047	34.203	45.656	9.490	33.646
2/10 W/I-12" SL	47.156	11.490		47.156	12.047		47.656	11.490	
2/10 W/I-14" SL	49.156	13.490		49.156	14.047		49.656	13.490	
3/0 W/I-10" SL	47.156	9.490	35.646	47.156	10.047	36.203	47.656	9.490	35.646
3/0 W/I-12" SL	49.156	11.490		49.156	12.047		49.656	11.490	
3/0 W/I-14" SL	51.156	13.490		51.156	14.047		51.656	13.490	
3/6 W/I-10" SL	53.156	9.490	41.646	53.156	10.047	42.203	53.656	9.490	41.646
3/6 W/I-12" SL	55.156	11.490		55.156	12.047		55.656	11.490	
3/6 W/I-14" SL	57.156	13.490		57.156	14.047		57.656	13.490	

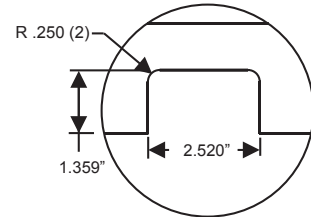
DOUBLE DOOR									
	ENTRY MULLION			PATIO MULLION			WIDE MULLION		
	A	B	C	A	B	C	A	B	C
4/8 DOUBLE MULLION	57.313	27.646	27.646	57.313	28.203	28.203	57.813	27.646	27.646
5/0 DOUBLE MULLION	61.313	29.646	29.646	61.313	30.203	30.203	61.813	29.646	29.646
5/4 DOUBLE MULLION	65.313	31.646	31.646	65.313	32.203	32.203	65.813	31.646	31.646
5/8 DOUBLE MULLION	69.313	33.646	33.646	69.313	34.203	34.203	69.813	33.646	33.646
6/0 DOUBLE MULLION	73.313	35.646	35.646	73.313	36.203	36.203	73.813	35.646	35.646



ENTRY



PATIO

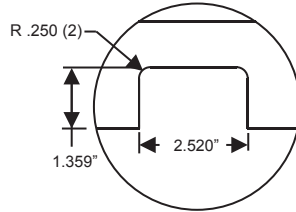
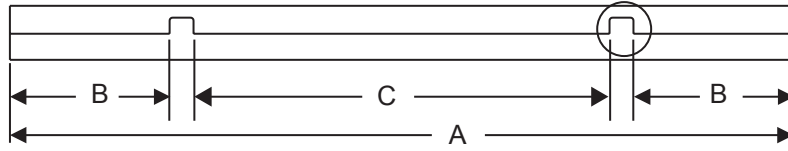


WIDE

TRIPLE AND SINGLE WITH 2 SIDELITES										
		ENTRY MULLION			PATIO MULLION			WIDE MULLION		
		A	B	C	A	B	C	A	B	C
TRIPLE PATIO UNITS	7/0 TRIPLE	86.470	27.647	27.136	86.470	28.204	28.250	87.470	27.647	27.136
	7/6 TRIPLE	92.470	29.647	29.136	92.470	30.204	30.250	93.470	29.647	29.136
	8/0 TRIPLE	98.470	31.647	31.136	98.470	32.204	32.250	99.470	31.647	31.136
	8/6 TRIPLE	104.470	33.647	33.136	104.470	34.204	34.250	105.470	33.647	33.136
	9/0 TRIPLE	110.470	35.647	35.136	110.470	36.204	36.250	111.470	35.647	35.136
CONTINUOUS - 2 SIDELITE	2/4 W/2-10" SL	50.156	9.490	27.136	50.156	10.047	28.250	51.156	9.490	27.136
	2/4 W/2-12" SL	54.156	11.490		54.156	12.047		55.156	11.490	
	2/4 W/2-14" SL	58.156	13.490		58.156	14.047		59.156	13.490	
	2/6 W/2-10" SL	52.156	9.490	29.136	52.156	10.047	30.250	53.156	9.490	29.136
	2/6 W/2-12" SL	56.156	11.490		56.156	12.047		57.156	11.490	
	2/6 W/2-14" SL	60.156	13.490		60.156	14.047		61.156	13.490	
	2/8 W/2-10" SL	54.156	9.490	31.136	54.156	10.047	32.250	55.156	9.490	31.136
	2/8 W/2-12" SL	58.156	11.490		58.156	12.047		59.156	11.490	
	2/8 W/2-14" SL	62.156	13.490		62.156	14.047		63.156	13.490	
	2/10 W/2-10" SL	56.156	9.490	33.136	56.156	10.047	34.250	57.156	9.490	33.136
	2/10 W/2-12" SL	60.156	11.490		60.156	12.047		61.156	11.490	
	2/10 W/2-14" SL	64.156	13.490		64.156	14.047		65.156	13.490	
	3/0 W/2-10" SL	58.156	9.490	35.136	58.156	10.047	36.250	59.156	9.490	35.136
	3/0 W/2-12" SL	62.156	11.490		62.156	12.047		63.156	11.490	
	3/0 W/2-14" SL	66.156	13.490		66.156	14.047		67.156	13.490	
	3/6 W/2-10" SL	64.156	9.490	41.136	64.156	10.047	42.250	65.156	9.490	41.136
3/6 W/2-12" SL	68.156	11.490	68.156		12.047	69.156		11.490		
3/6 W/2-14" SL	72.156	13.490	72.156		14.047	73.156		13.490		

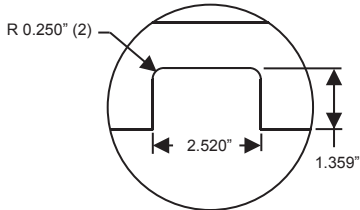
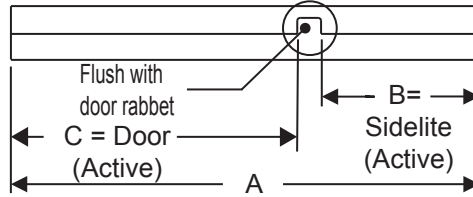
Frame Parts

Head Jambs - French Continuous with 2 Sidelites



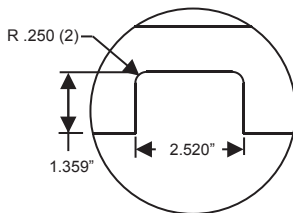
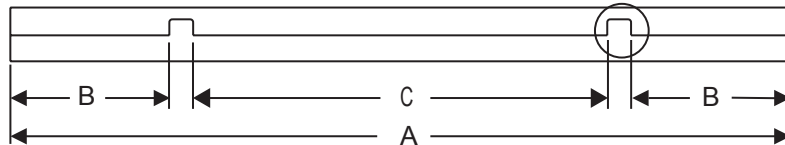
Frame Parts

CONTINUOUS - FRENCH WITH 7/8" ASTRAGAL AND 2 FIXED SIDELITES - WIDE MULLION			
	A	B	C
6/0 W/2-10" SL	96.062	9.49	72.042
6/0 W/2-12" SL	100.062	11.49	
6/0 W/2-14" SL	104.062	13.49	



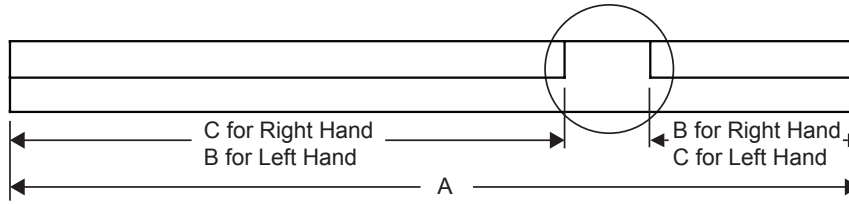
CONTINUOUS - 1 VENTING SIDELITE				
		A	B	C
SINGLE WITH 1 VENTING SIDELITE	2/4 W/1-12" VENTING SL	41.877	11.677	27.680
	2/4 W/1-14" VENTING SL	43.877	13.677	
	2/6 W/1-12" VENTING SL	43.877	11.677	29.680
	2/6 W/1-14" VENTING SL	45.877	13.677	
	2/8 W/1-12" VENTING SL	45.877	11.677	31.680
	2/8 W/1-14" VENTING SL	47.877	13.677	
	2/10 W/1-12" VENTING SL	47.877	11.677	33.680
	2/10 W/1-14" VENTING SL	49.877	13.677	
	3/0 W/1-12" VENTING SL	49.877	11.677	35.680
	3/0 W/1-14" VENTING SL	51.877	13.677	

Frame Parts



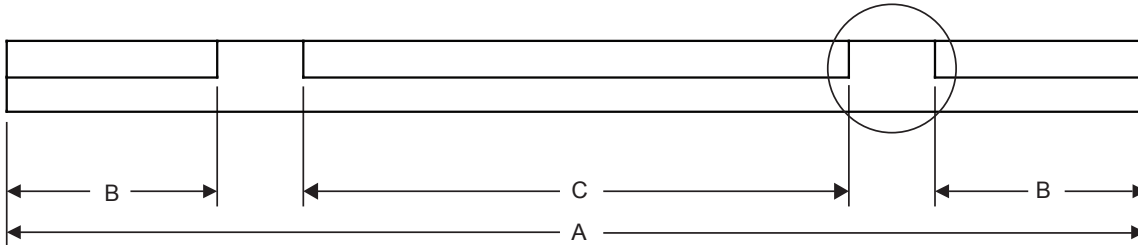
CONTINUOUS - 2 VENTING SIDELITE					
		A	B	C	
"WIDE MULLION" STANDARD DOOR	SINGLE	2/4 W/2-12" VENTING SL	55.564	11.677	27.170
		2/4 W/2-14" VENTING SL	59.564	13.677	
		2/6 W/2-12" VENTING SL	57.564	11.677	29.170
		2/6 W/2-14" VENTING SL	61.564	13.677	
		2/8 W/2-12" VENTING SL	59.564	11.677	31.170
		2/8 W/2-14" VENTING SL	63.564	13.677	
		2/10 W/2-12" VENTING SL	61.564	11.677	33.170
		2/10 W/2-14" VENTING SL	65.564	13.677	
		3/0 W/2-12" VENTING SL	63.564	11.677	35.170
	3/0 W/2-14" VENTING SL	67.564	13.677		
	FRENCH	4/8 W/2-12" VENTING SL	84.470	11.677	56.076
		4/8 W/2-14" VENTING SL	88.470	13.677	
		5/0 W/2-12" VENTING SL	88.470	11.677	60.076
		5/0 W/2-14" VENTING SL	92.470	13.677	
		5/4 W/2-12" VENTING SL	92.470	11.677	64.076
		5/4 W/2-14" VENTING SL	96.470	13.677	
		5/8 W/2-12" VENTING SL	96.470	11.677	68.076
		5/8 W/2-14" VENTING SL	100.470	13.677	
6/0 W/2-12" VENTING SL		100.470	11.677	72.076	
6/0 W/2-14" VENTING SL	104.470	13.677			

Head Jambs - Spread Mullion

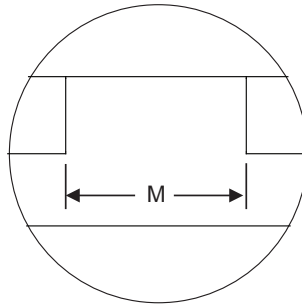


SPREAD MULLION															
			LENGTH "A"												
UNIT SIZE	"B"	"C"	S000	S025	S050	S075	S100	S125	S150	S175	S200	S225	S250	S275	S300
3/0 W/ 1-10" SIDELITE	9.490	35.646	47.656	47.906	48.156	48.406	48.656	48.906	49.156	49.406	49.656	49.906	50.156	50.406	50.656
3/0 W/ 1-12" SIDELITE	11.490		49.656	49.906	50.156	50.406	50.656	50.906	51.156	51.406	51.656	51.906	52.156	52.406	52.656
3/0 W/ 1-14" SIDELITE	13.490		51.656	51.906	52.156	52.406	52.656	52.906	53.156	53.406	53.656	53.906	54.156	54.406	54.656

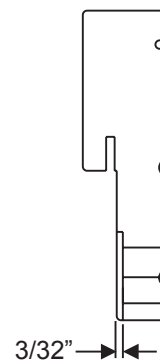
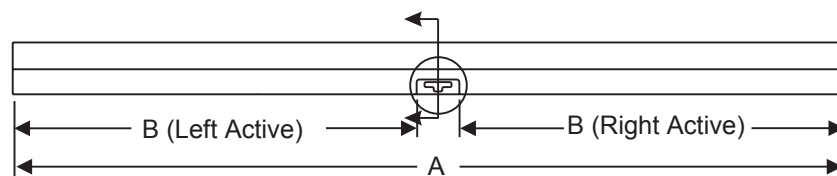
Frame Parts



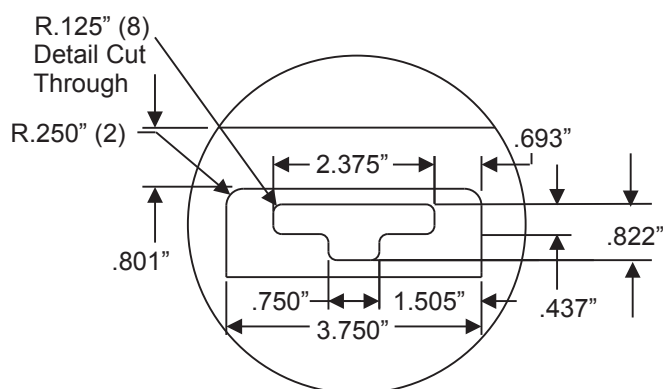
SPREAD MULLION															
			LENGTH "A"												
UNIT SIZE	"B"	"C"	S000	S025	S050	S075	S100	S125	S150	S175	S200	S225	S250	S275	S300
3/0 W/ 2-10" SIDELITES	9.490	35.136	59.156	59.656	60.156	60.656	61.156	61.656	62.156	62.656	63.156	63.656	64.156	64.656	65.156
3/0 W/ 2-12" SIDELITES	11.490		63.156	63.656	64.156	64.656	65.156	65.656	66.156	66.656	67.156	67.656	68.156	68.656	69.156
3/0 W/ 2-14" SIDELITES	13.490		67.156	67.656	68.156	68.656	69.156	69.656	70.156	70.656	71.156	71.656	72.156	72.656	73.156



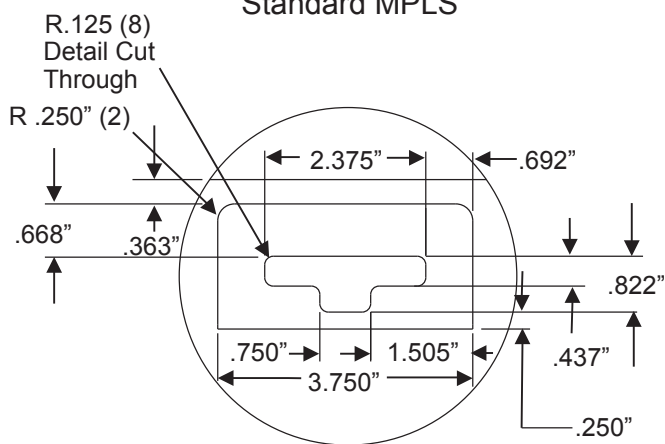
WIDTH "M"													
S000	S025	S050	S075	S100	S125	S150	S175	S200	S225	S250	S275	S300	
2.520	2.770	3.020	3.270	3.520	3.770	4.020	4.270	4.520	4.770	5.020	5.270	5.520	



FRENCH DOOR WITH MULTIPOINT LOCK			
		A	B
7/8" ASTRAGAL	4/0 DOUBLE ASTRAGAL	49.062	21.755
	4/8 DOUBLE ASTRAGAL	57.062	25.755
	5/0 DOUBLE ASTRAGAL	61.062	27.755
	5/4 DOUBLE ASTRAGAL	65.062	29.755
	5/8 DOUBLE ASTRAGAL	69.062	31.755
	6/0 DOUBLE ASTRAGAL	73.062	33.755
	7/0 DOUBLE ASTRAGAL	85.062	39.755



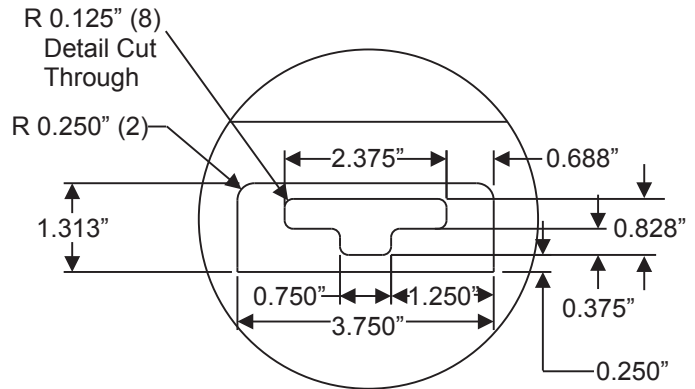
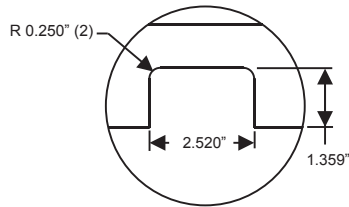
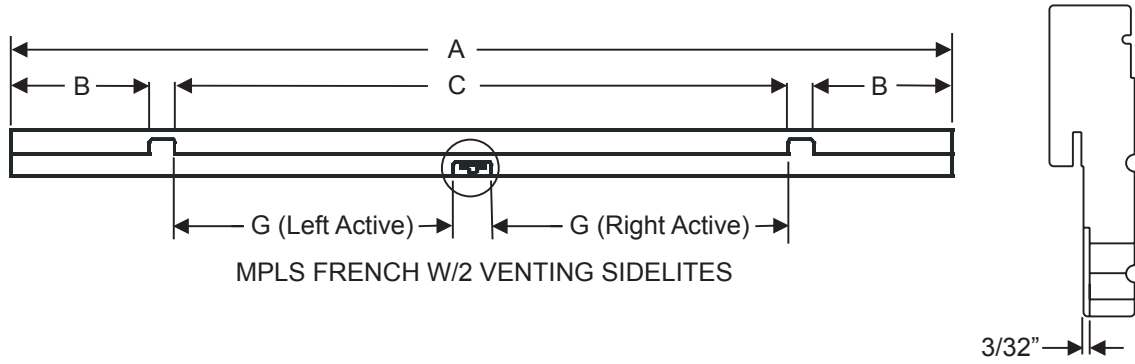
Standard MPLS



Impact MPLS

Frame Parts

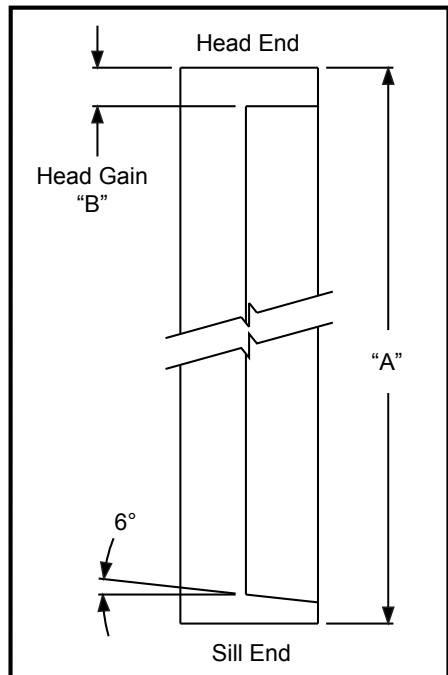
Head Jamb - French Multipoint with 2 Venting Sidelites



Frame Parts

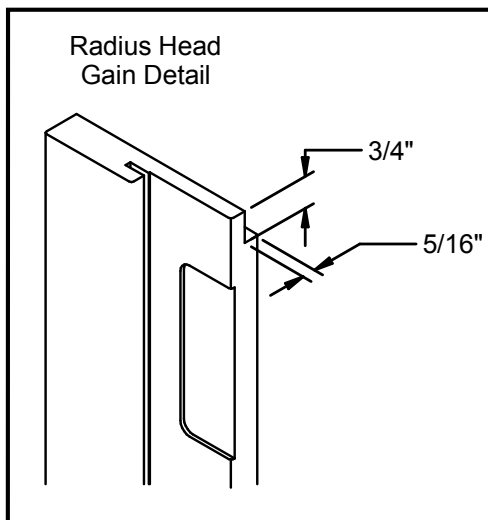
		CONTINUOUS W/ 2 VENTING SIDELITES (REQUIRES WIDE MULLION)			
		HANDED			
		A	B	C	G
7/8" ASTRAGAL STANDARD DOORS	4/8 FRENCH 7/8" AST. W/2 VENTING SL	84.470	11.677	56.076	25.262
	4/8 FRENCH 7/8" AST. W/2 VENTING SL	88.470	13.677	60.076	27.262
	5/0 FRENCH 7/8" AST. W/2 VENTING SL		11.677		
	5/0 FRENCH 7/8" AST. W/2 VENTING SL	92.470	13.677	64.076	29.262
	5/4 FRENCH 7/8" AST. W/2 VENTING SL		11.677		
	5/4 FRENCH 7/8" AST. W/2 VENTING SL	96.470	13.677	68.076	31.262
	5/8 FRENCH 7/8" AST. W/2 VENTING SL		11.677		
	5/8 FRENCH 7/8" AST. W/2 VENTING SL	100.470	13.677	72.076	33.262
	6/0 FRENCH 7/8" AST. W/2 VENTING SL		11.677		
	6/0 FRENCH 7/8" AST. W/2 VENTING SL	104.470	13.677		

Identify Jamb Ends



INSWING JAMB		
UNIT SIZE	LENGTH "A"	HEAD GAIN "B"
6/6	79.483	1.250
6/8	82.031	1.250
7/0	86.031	1.250
8/0	98.031	1.250
6/8 3/0 ARCH	76.281	1.570
6/8 3/6 ARCH	76.531	1.491
8/0 3/0 ARCH	92.281	1.570
8/0 3/6 ARCH	92.531	1.491
6/8 3/0 RADIUS	62.201	SEE FIGURE BELOW
6/8 3/6 RADIUS	59.201	
8/0 3/0 RADIUS	78.201	
8/0 3/6 RADIUS	75.201	

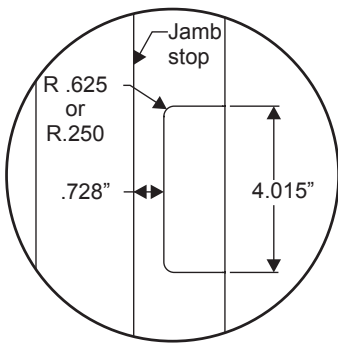
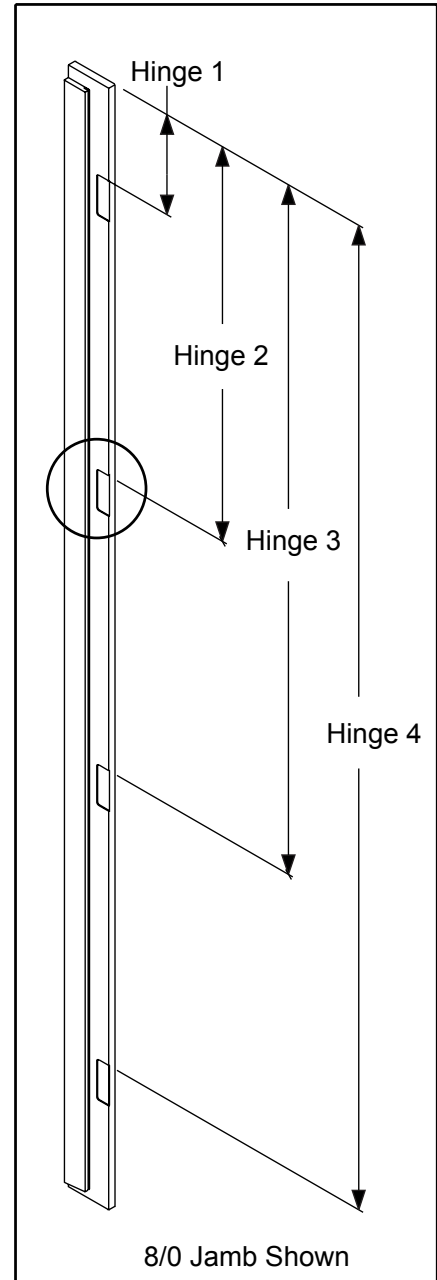
Frame Parts



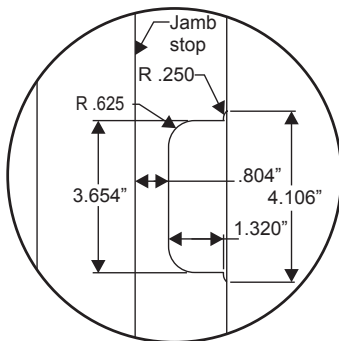
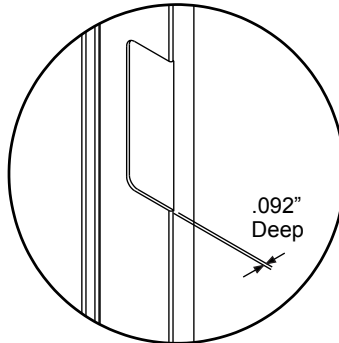
Side Jambs

		HINGE MORTISE LOCATIONS				
		UNIT SIZE	HINGE [1]	HINGE [2]	HINGE [3]	HINGE [4]
STANDARD HINGE	STANDARD	6/6	9.219	38.469	67.719	N/A
		6/8				
		7/0				
		8/0	6.094	31.594	57.094	82.594
ADJUSTABLE HINGE	STANDARD	6/6	9.400	38.650	67.900	N/A
		6/8				
		7/0				
		8/0	6.306	31.806	57.306	82.806

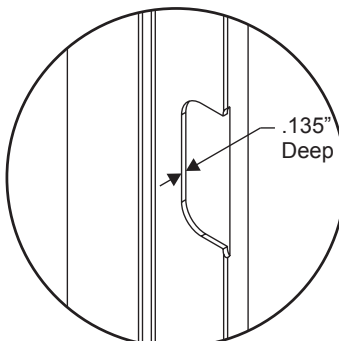
Frame Parts



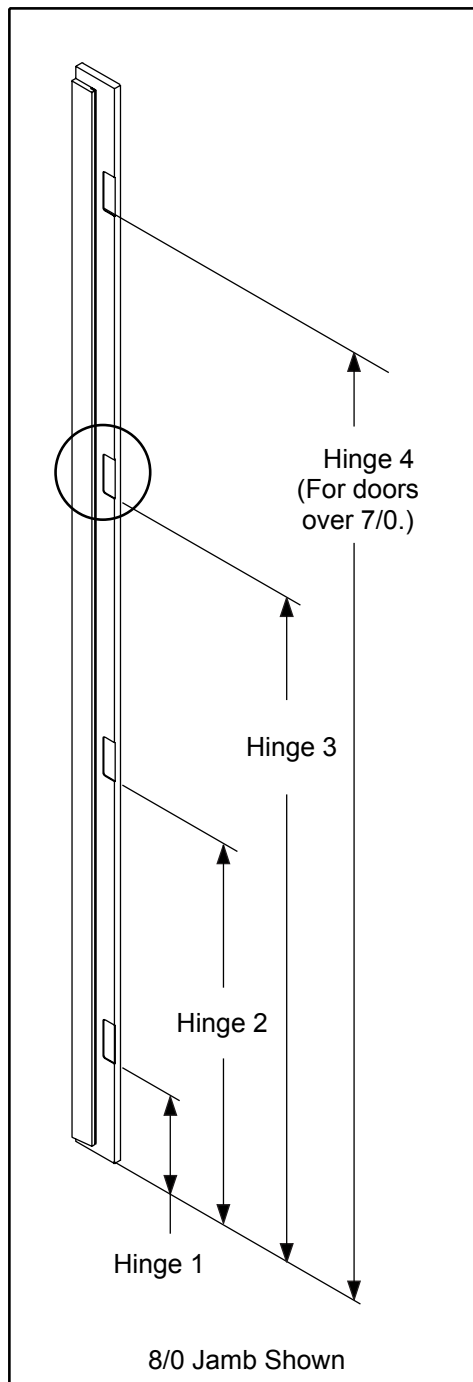
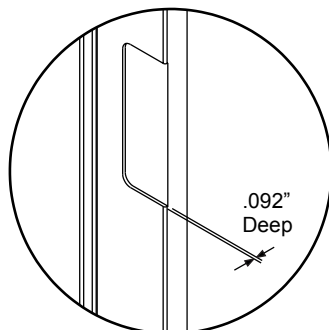
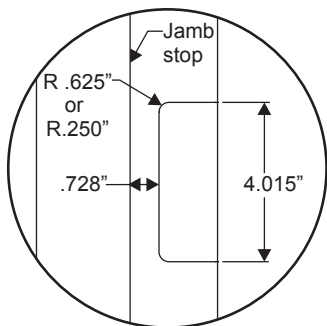
Standard Hinge



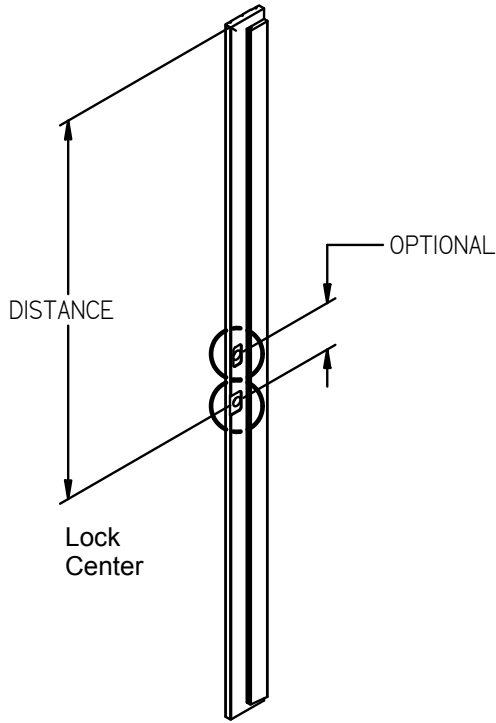
Adjustable Hinge



		HINGE MORTISE LOCATIONS				
	UNIT HEIGHT	UNIT WIDTH	HINGE 1	HINGE 2	HINGE 3	HINGE 4
ARCH	6/8	3/0 or 3/6	10.266	37.703	65.141	N/A
	8/0		11.391	34.641	57.891	81.141
RADIUS	6/8	3/0	10.266	33.391	56.516	N/A
		3/6	9.266	31.391	53.516	
	8/0	3/0	11.391	31.766	52.141	72.516
		3/6		30.766	50.141	69.516



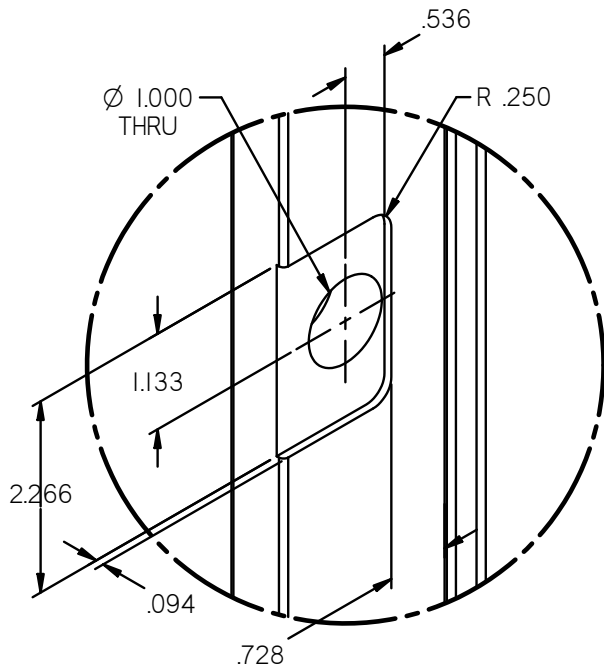
Side Jambs



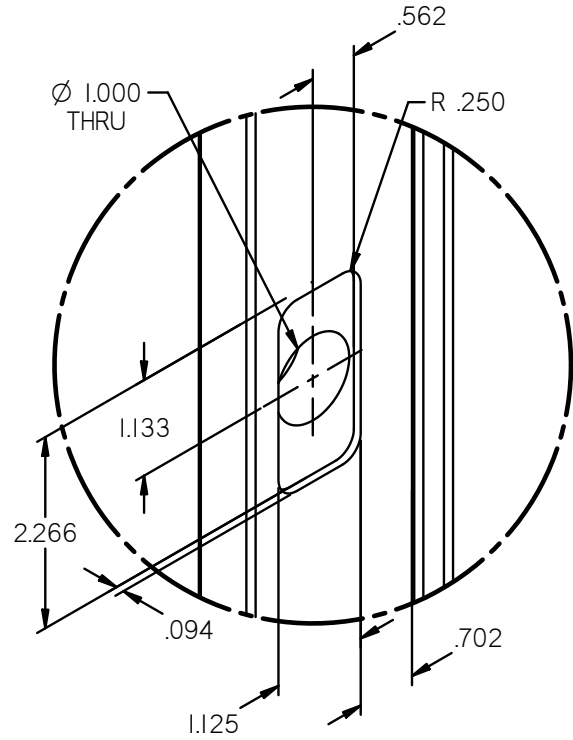
STANDARD SIDE JAMBS	
UNIT SIZE	STRIKE
6/6	44.844
6/8	
7/0	48.844
8/0	60.844

ARCH & RADIUS SIDE JAMBS			
	UNIT HEIGHT	UNIT WIDTH	STRIKE
ARCH	6/8	3/0	39.094
		3/6	39.334
	8/0	3/0	55.094
3/6		55.344	
RADIUS	6/8	3/0	25.014
		3/6	22.016
	8/0	3/0	41.014
3/6		38.016	

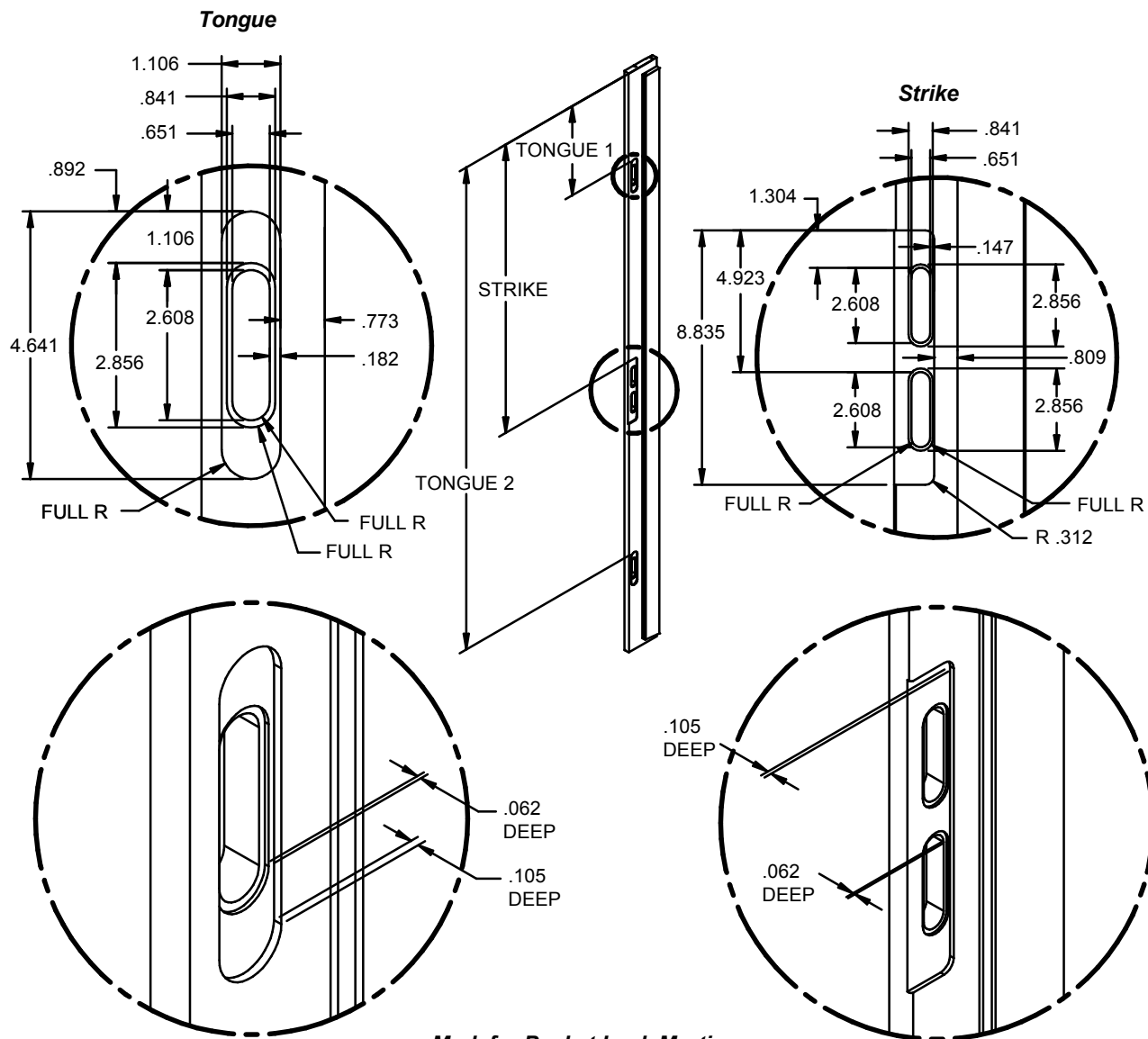
Frame Parts



LATCH MACHINING



OPTIONAL DEADBOLT MACHINING



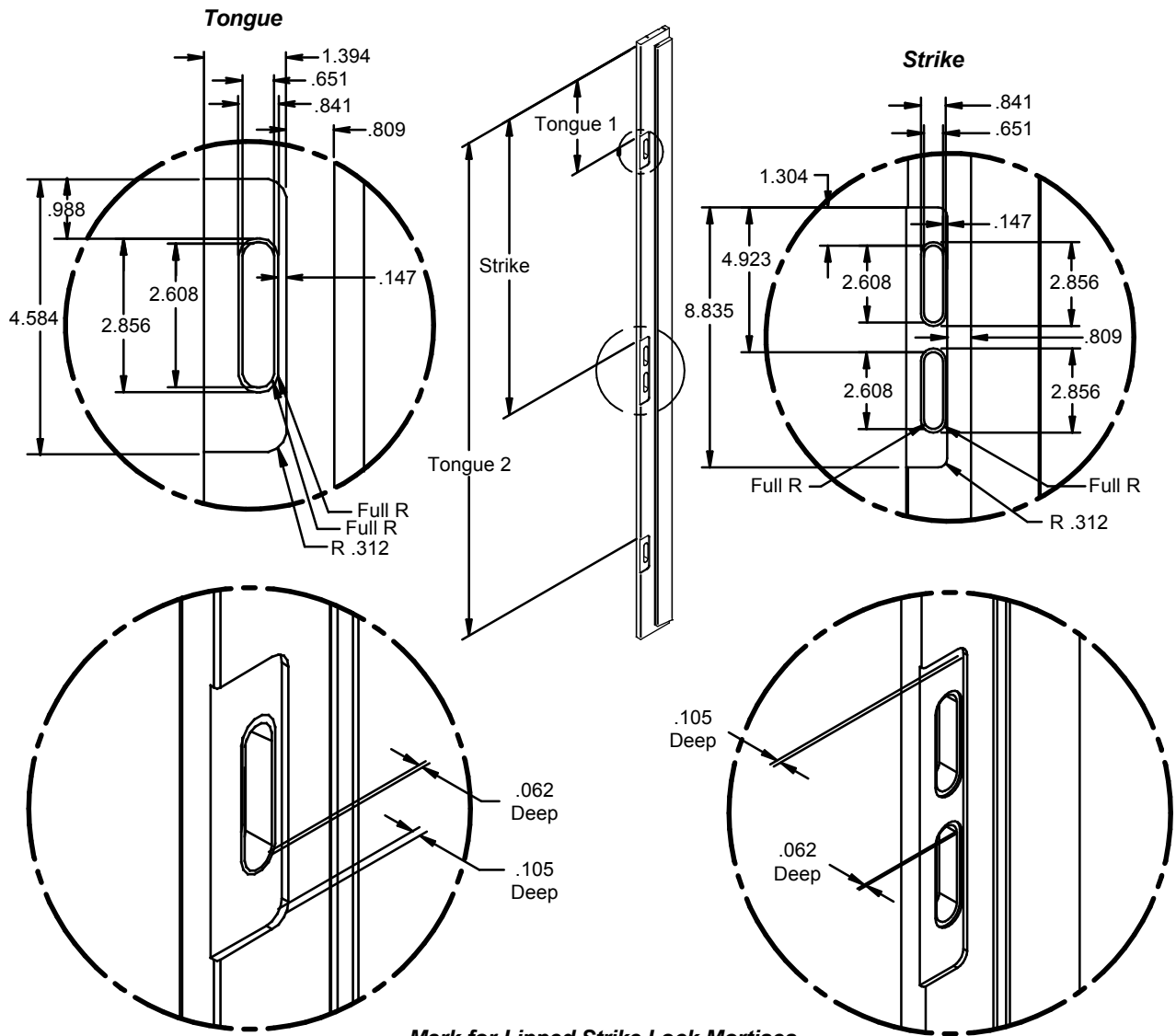
Frame Parts

Mark for Pocket Lock Mortises

**Manual Pocket - Side Jamb
Lock Mortise Locations**

	Unit Size	Strike	Tongue 1	Tongue 2
Pocket Strike Machining	6/6	40.851	12.585	68.254
	6/8	40.851	12.585	68.254
	7/0	44.851	16.585	72.254
	8/0	56.851	10.867	84.254

Side Jambs

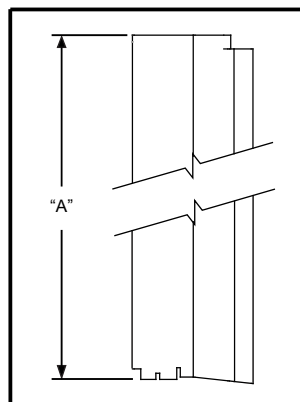
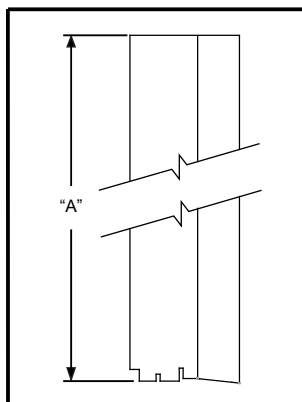


Frame Parts

Mark for Lipped Strike Lock Mortises

Manual Lipped Strike - Side Jamb Lock Mortise Locations

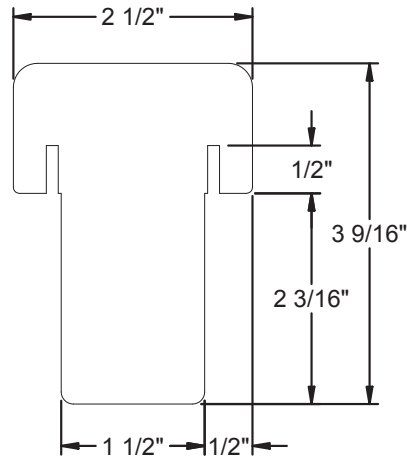
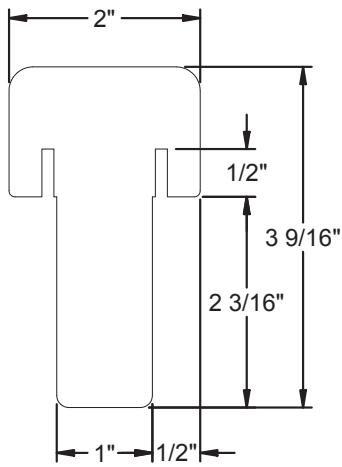
	Unit Size	Strike	Tongue 1	Tongue 2
Lipped Strike Machining	6/6	40.851	12.614	68.283
	6/8	40.851	12.614	68.283
	7/0	44.851	16.614	72.283
	8/0	56.851	10.896	84.283



ENTRY MULLION		
	UNIT SIZE	LENGTH "A"
INSWING	6/6	77.889
	6/8	80.437
	7/0	84.437
	8/0	96.437
OUTSWING	6/6	USE PATIO MULLION
	6/8	
	7/0	
	8/0	

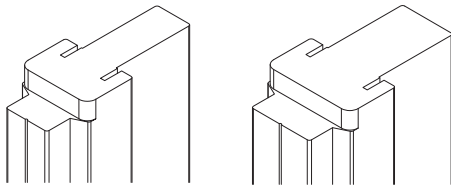
PATIO MULLION		
	UNIT SIZE	LENGTH "A"
INSWING	6/6	77.889
	6/8	80.437
	7/0	84.437
	8/0	96.437
OUTSWING	6/6	77.128
	6/8	79.676
	7/0	83.676
	8/0	95.676

Frame Parts

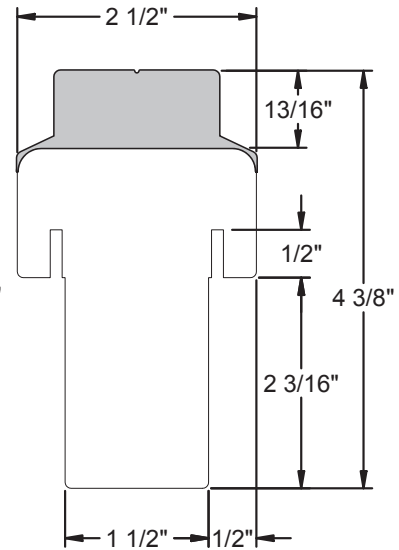
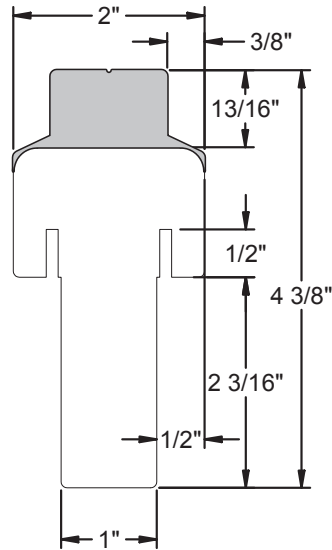


Oak, Pine, and Rot-Resistant
Standard & Wide Mullion

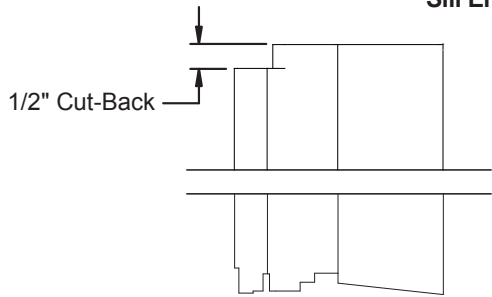
Frame Parts



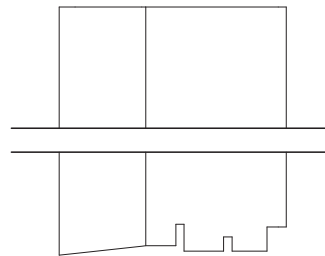
Patio Standard & Wide Mullion
(Must be used with all screen applications)



Sill End Details



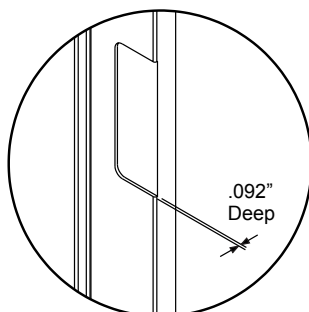
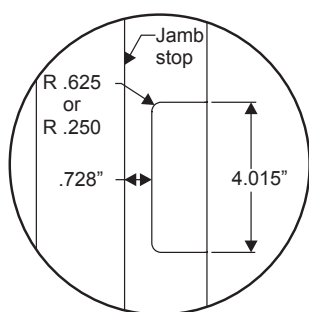
Composite Outswing
(Patio Mullion Must Be Used)



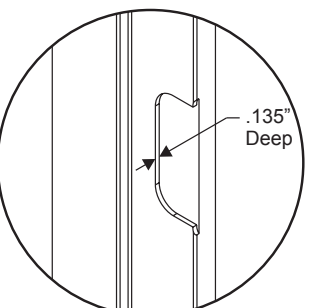
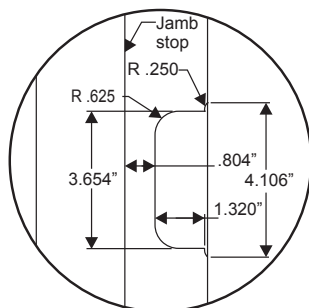
Composite/Hardwood
Inswing Adjustable
(Entry Mullion Shown)

Hinge Mortise Locations

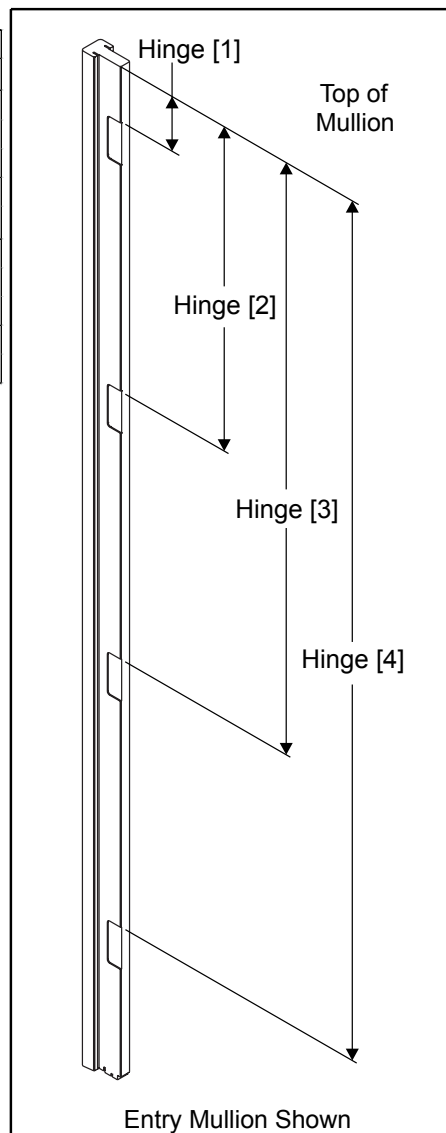
		HINGE MORTISE LOCATIONS				
		UNIT SIZE	HINGE [1]	HINGE [2]	HINGE [3]	HINGE [4]
STANDARD HINGE	STANDARD	6/6	8.469	37.719	66.969	N/A
		6/8				
		7/0				
		8/0	5.344	30.844	56.344	81.844
ADJUSTABLE HINGE	STANDARD	6/6	8.650	37.900	67.150	N/A
		6/8				
		7/0				
		8/0	5.556	31.056	56.556	82.056



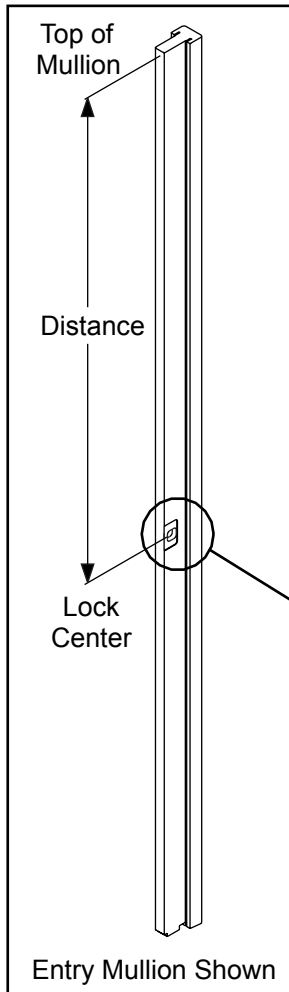
Standard Hinge



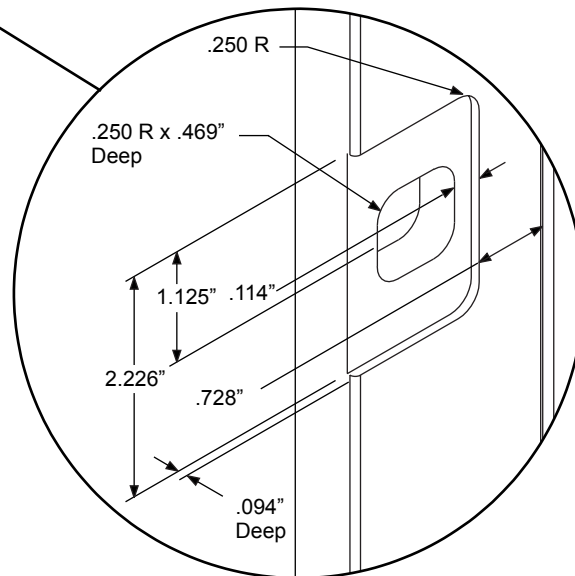
Adjustable Hinge



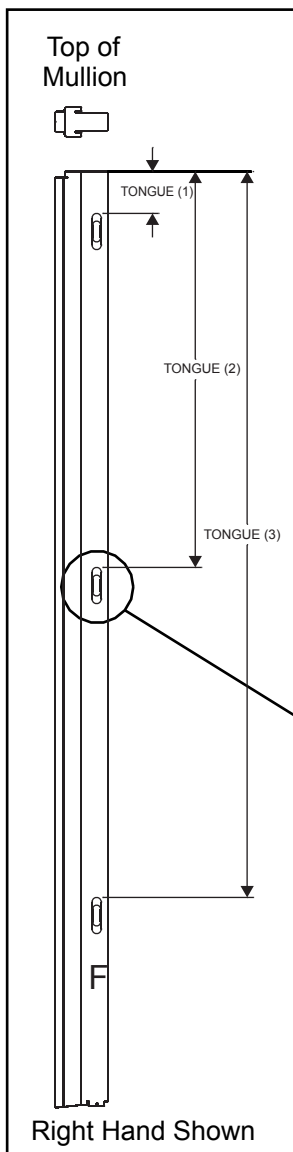
Standard Lock Mortise location



	UNIT SIZE	STRIKE
STD.	6/6	44.094
	6/8	
	7/0	48.094
	8/0	60.094



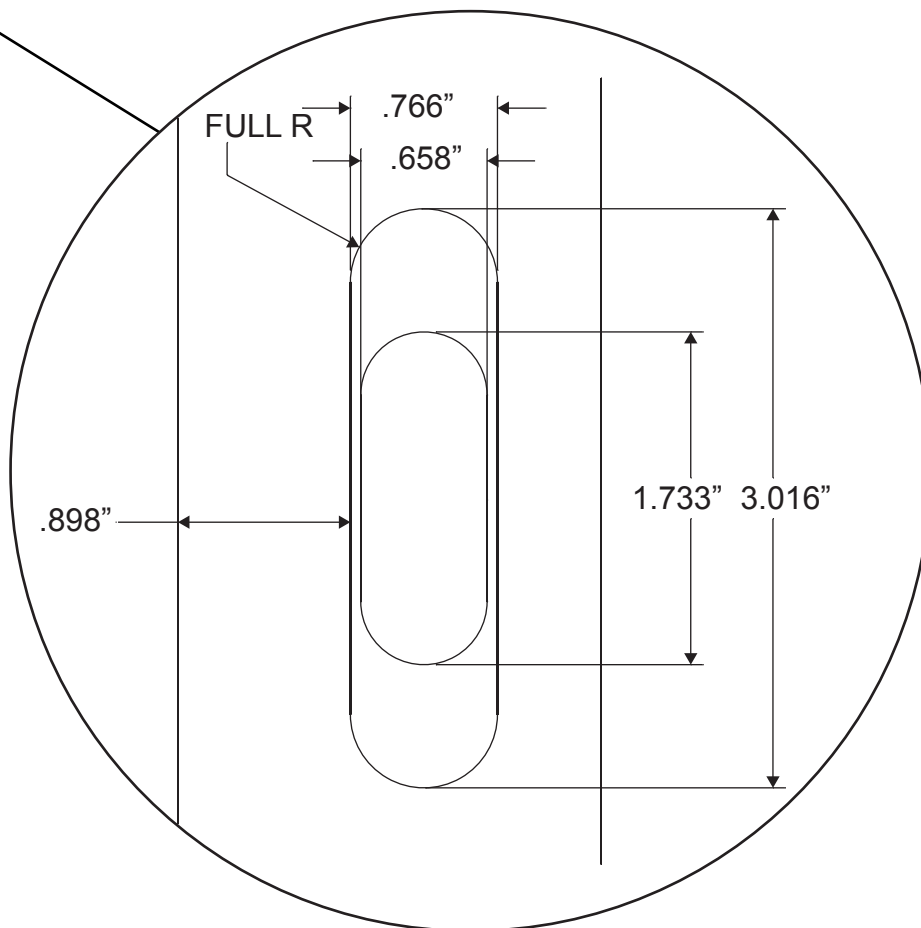
Frame Parts

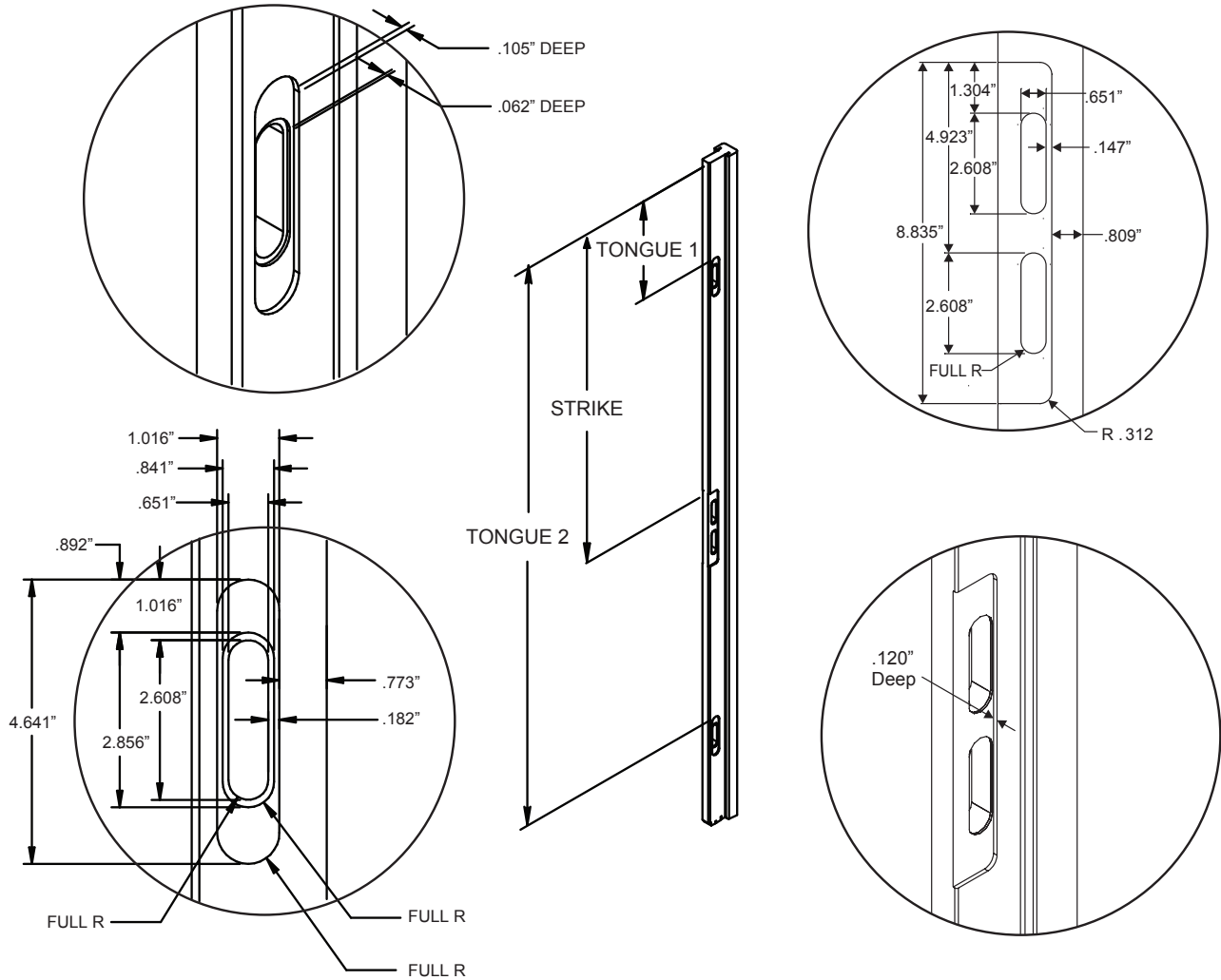


**Vented Sidelite Lock
Mortise Location**

		VENTING SIDELITE MPLS			
		UNIT SIZE	TONGUE 1	TONGUE 2	TONGUE 3
STANDARD	6/6	3.489	32.989	60.491	
	6/8				
	8/0	16.489	48.989	76.491	

Frame Parts

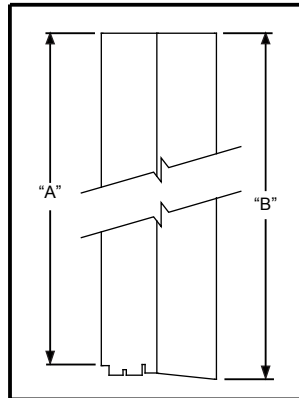




Frame Parts

Manual Tongue & Variable Height Lock Mortise Location

	UNIT SIZE	STRIKE	TONGUE 1	TONGUE 2
POCKET STRIKE	6/6	40.101	11.836	67.506
	6/8	40.101	11.836	67.506
	7/0	44.101	15.836	71.506
	8/0	56.101	10.188	83.506



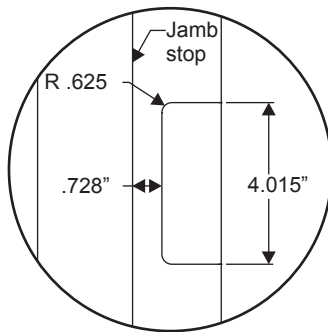
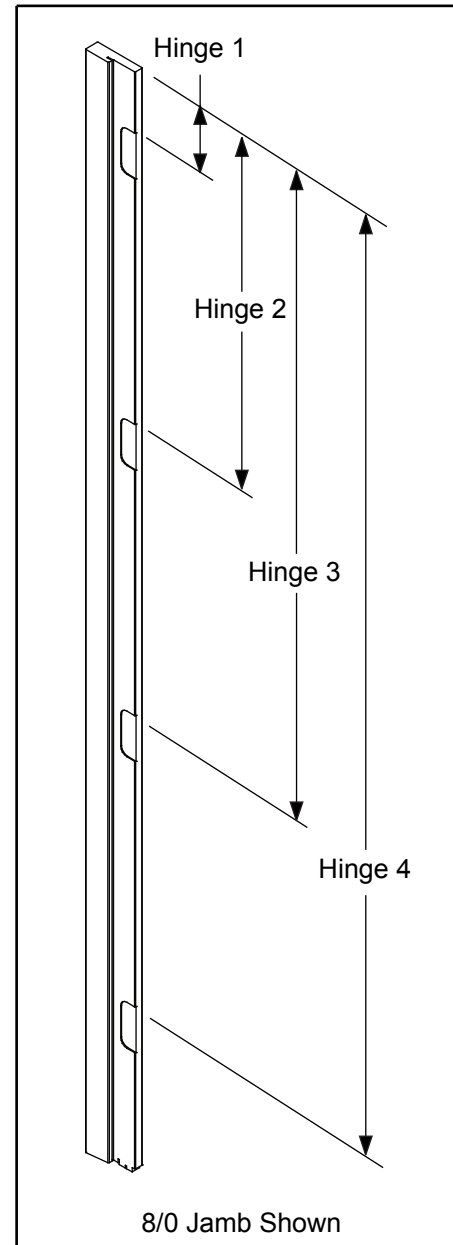
		SPREAD MULLION JAMB				
		UNIT SIZE	LENGTH "A"	("B")		
				4-9/16"	5-1/4"	6-9/16"
INSWING	STANDARD	66 = 6/6	77.494	78.037	78.109	78.247
		68 = 6/8	80.042	80.585	80.657	80.795
		70 = 7/0	84.042	84.585	84.657	84.795
		80 = 8/0	96.042	96.585	96.657	96.795
	SILL/SILL GAIN	68 = 6/8	80.292	81.378	81.450	81.588
		80 = 8/0	96.292	97.378	97.450	97.588

Frame Parts

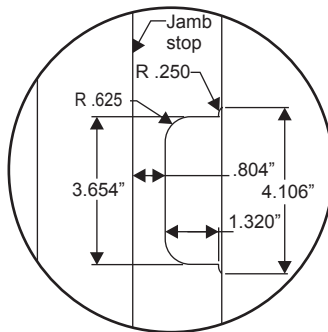
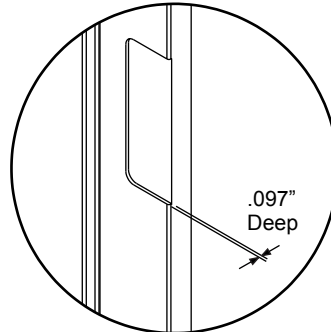
Spread Mullion Jambs

		SPREAD MULLION HINGE MORTISE LOCATIONS				
		UNIT SIZE	HINGE [1]	HINGE [2]	HINGE [3]	HINGE [4]
STANDARD HINGE	6/6	8.469	37.719	66.969	N/A	
	6/8					
	7/0	5.344	30.844	56.344	81.844	
	8/0					
ADJUSTABLE HINGE	6/6	8.650	37.900	67.150	N/A	
	6/8					
	7/0	5.556	31.056	56.556	82.056	
	8/0					

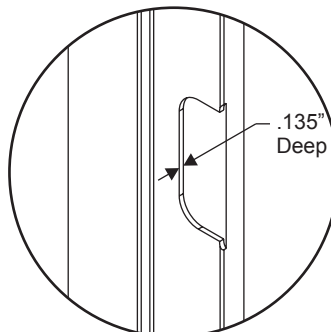
Frame Parts

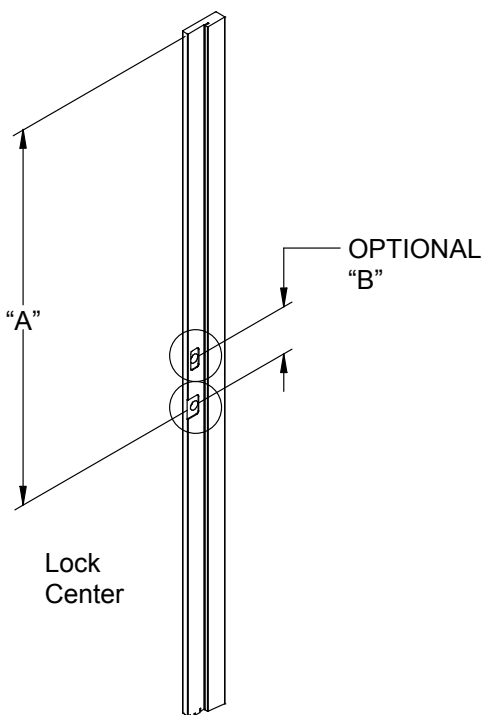


Standard Hinge



Adjustable Hinge

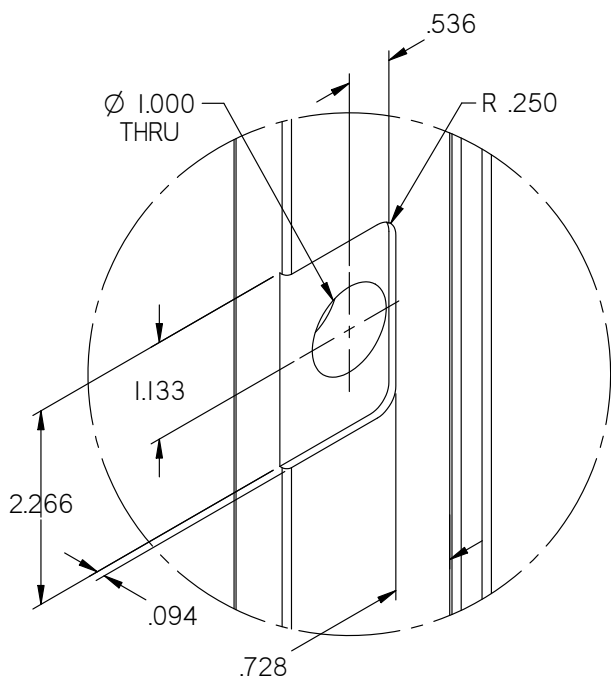




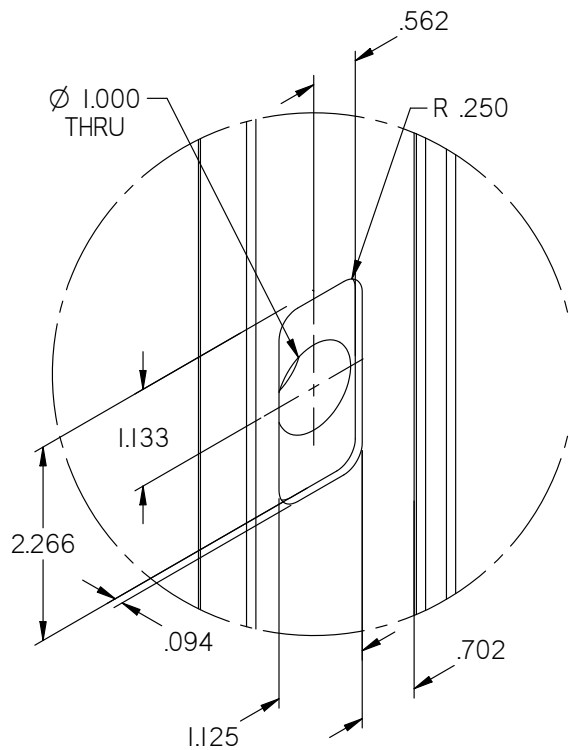
UNIT SIZE	"A"
6/6	44.094
6/8	
7/0	48.094
8/0	60.094

DOUBLE BORE CENTER TO CENTER	
CODE	"B"
J	N/A
K	12.000
L	5.500

Frame Parts

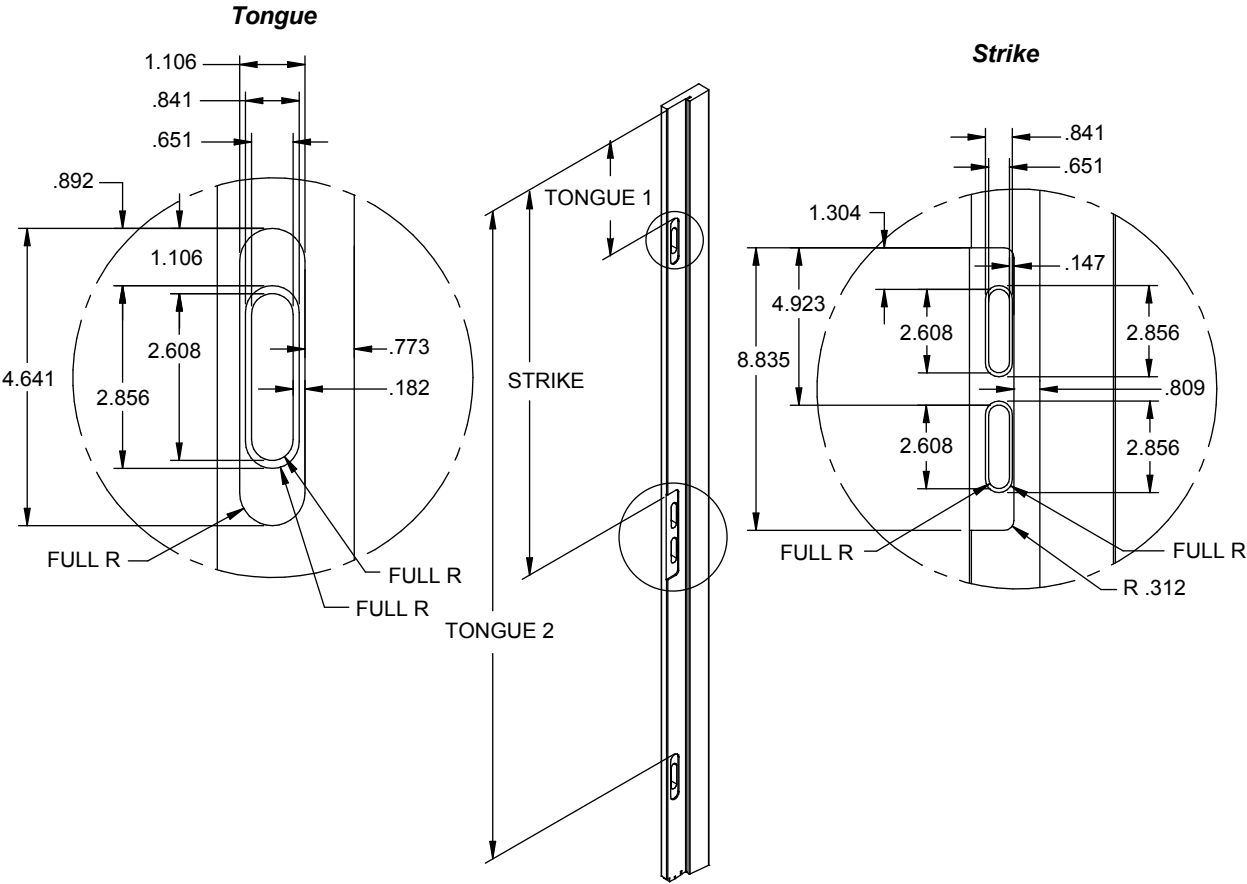


LATCH MACHINING



OPTIONAL DEADBOLT MACHINING

Spread Mullion Jambs



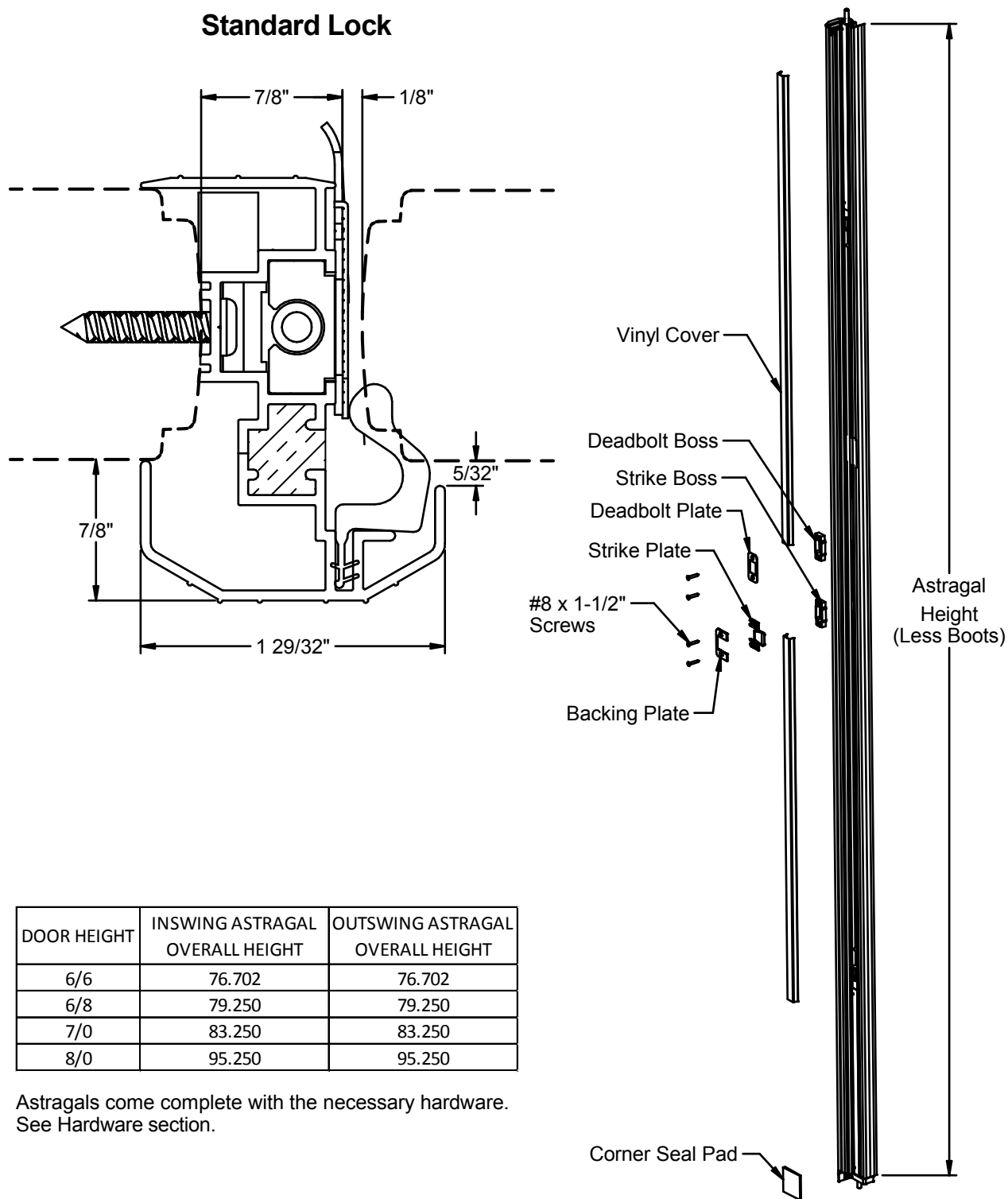
Frame Parts

Mark for Pocket Lock Mortises

**Manual Pocket - Side Jamb
Lock Mortise Locations
Spread Mullions**

	UNIT SIZE	STRIKE	TONGUE 1	TONGUE 2
POCKET STRIKE	6/6	40.101	11.835	67.504
	6/8	40.101	11.835	67.504
	7/0	44.101	15.835	71.504
	8/0	56.101	10.177	83.504

Standard Lock

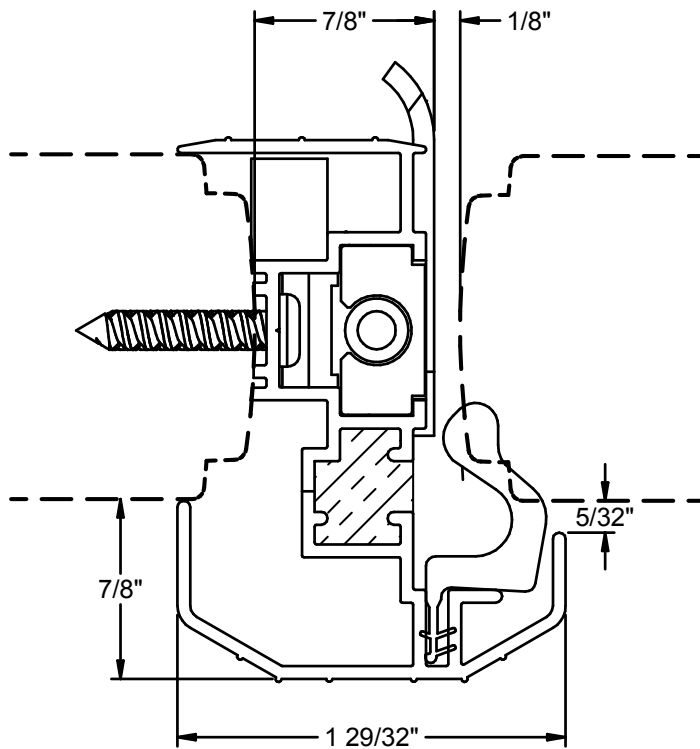


Frame Parts

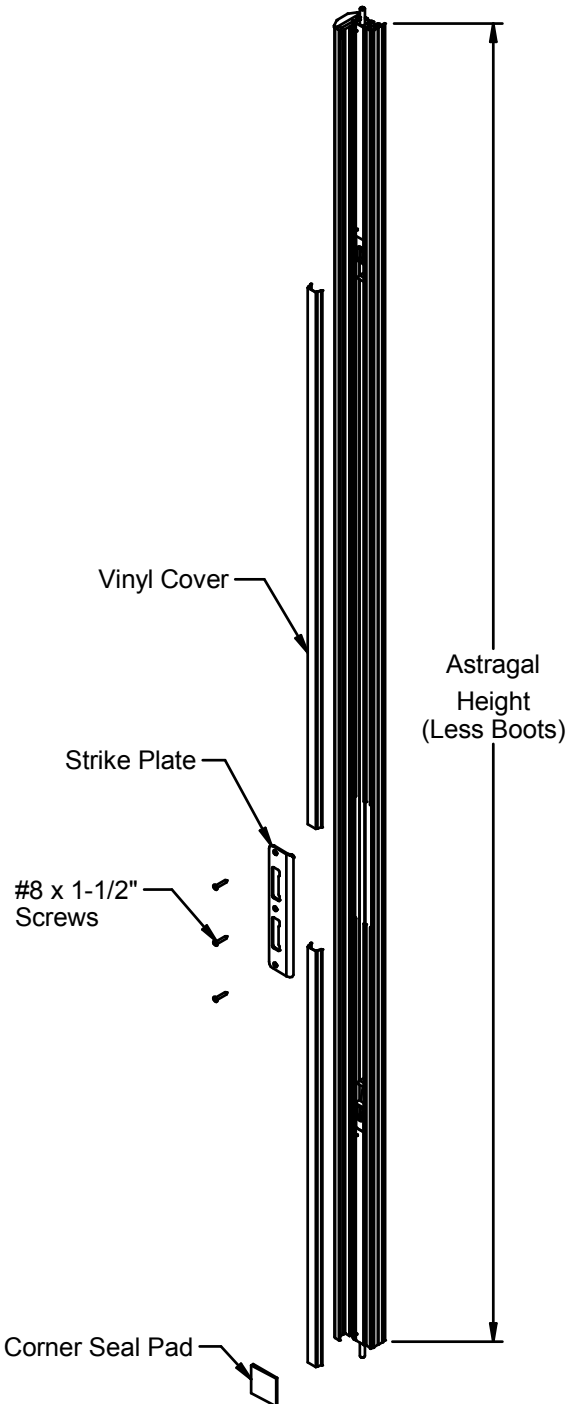
DOOR HEIGHT	INSWING ASTRAGAL OVERALL HEIGHT	OUTSWING ASTRAGAL OVERALL HEIGHT
6/6	76.702	76.702
6/8	79.250	79.250
7/0	83.250	83.250
8/0	95.250	95.250

Astragals come complete with the necessary hardware. See Hardware section.

**Multi-Point Lock
Manual Shootbolt**

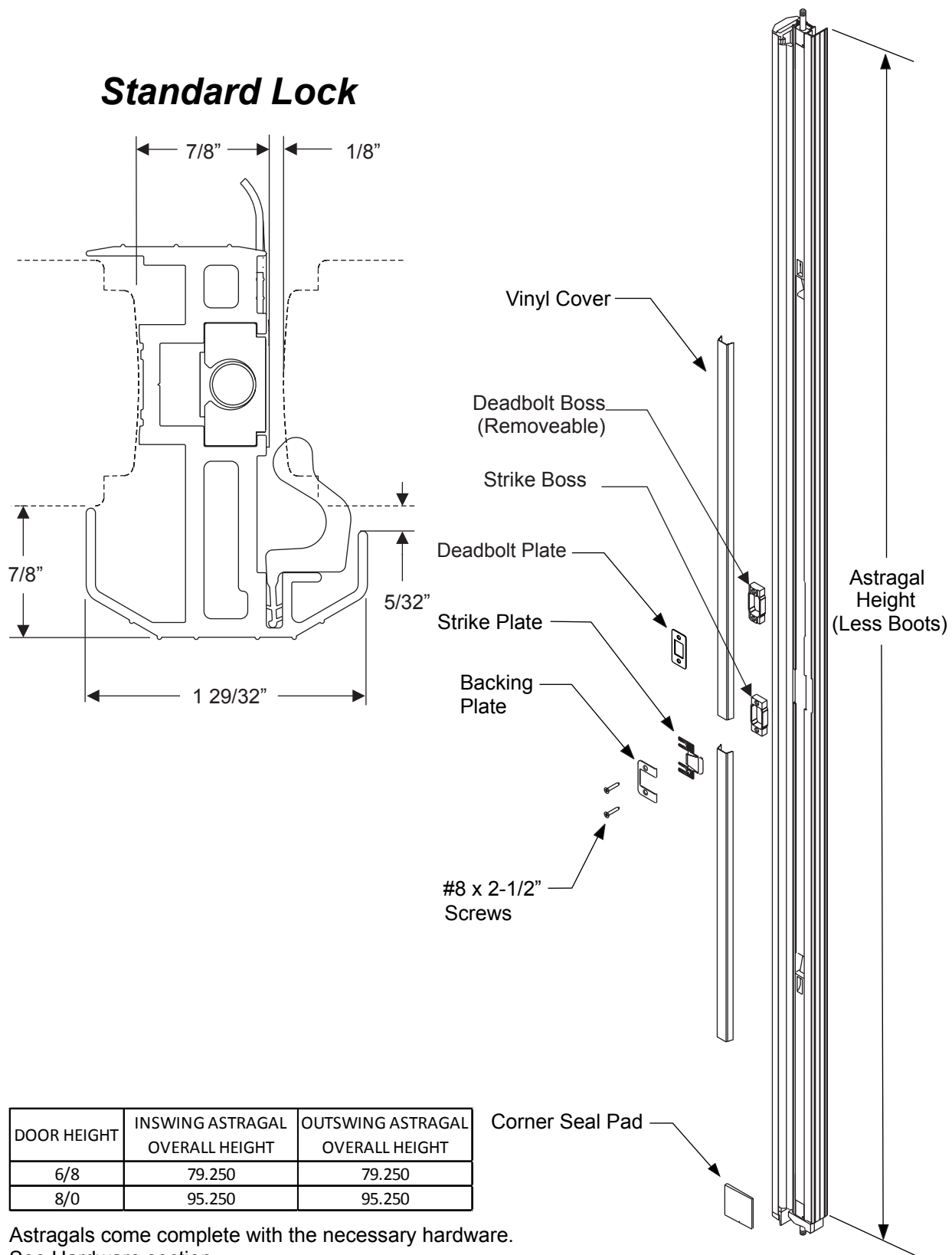


Frame Parts



DOOR HEIGHT	INSWING ASTRAGAL OVERALL HEIGHT	OUTSWING ASTRAGAL OVERALL HEIGHT
6/6	76.702	76.702
6/8	79.250	79.250
7/0	83.250	83.250
8/0	95.250	95.250

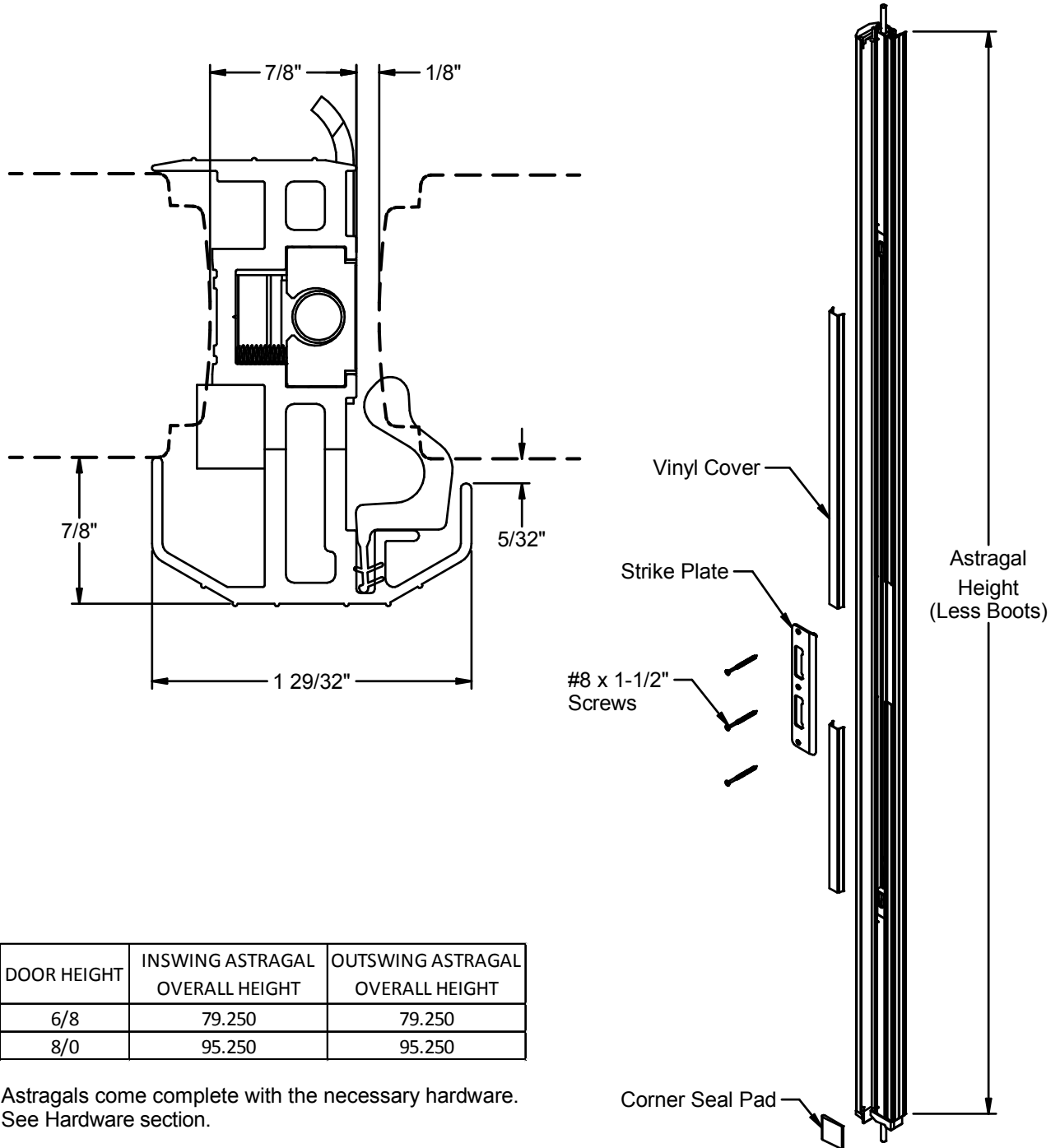
Astragals come complete with the necessary hardware. See Hardware section.



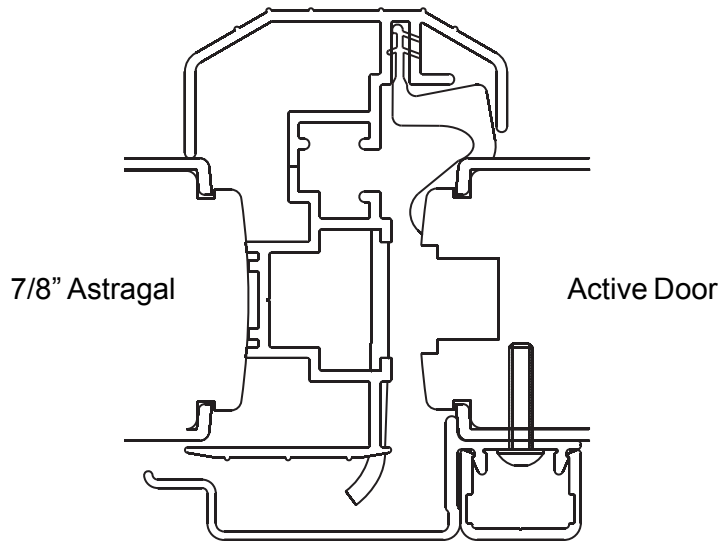
DOOR HEIGHT	INSWING ASTRAGAL OVERALL HEIGHT	OUTSWING ASTRAGAL OVERALL HEIGHT
6/8	79.250	79.250
8/0	95.250	95.250

Astragals come complete with the necessary hardware. See Hardware section.

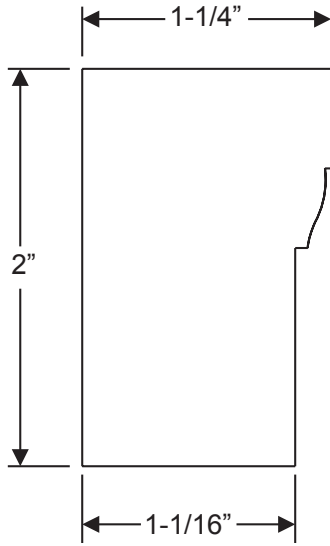
Multi-Point Lock Manual Shootbolt



**7/8" Aluminum Outswing
Astragal Security Cover**



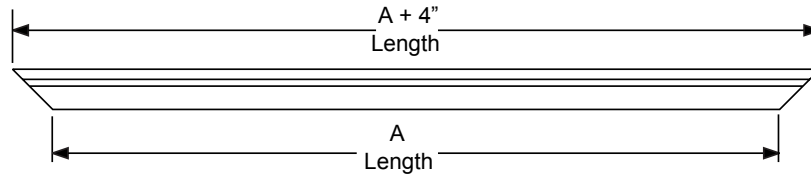
Frame Parts



***Brickmould - Wood and Rot-Resistant
(WM180 Profile)***

Frame Parts

Head Length

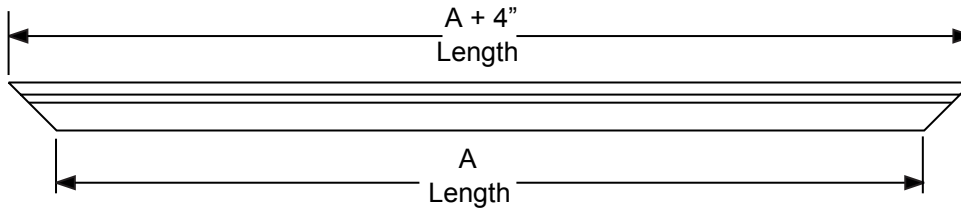


		UNIT SIZE	INSWING "A"	OUTSWING "A"
SINGLE	STANDARD LENGTHS	2/4	28.156	28.656
		2/6	30.156	30.656
		2/8	32.156	32.656
		2/10	34.156	34.656
		3/0	36.156	36.656
		3/6	42.156	42.656
FRENCH (7/8" ASTRAGAL)	STANDARD LENGTHS	4/0	49.062	49.562
		4/8	57.062	57.562
		5/0	61.062	61.562
		5/4	65.062	65.562
		5/8	69.062	69.562
		6/0	73.062	73.562
DOUBLE	STANDARD MULLION	4/8	57.313	57.813
		5/0	61.313	61.813
		5/4	65.313	65.813
		5/8	69.313	69.813
DOUBLE PLUS M.E.U.	STANDARD MULLION	6/0	73.313	73.813
		4/8 + 2/4	86.969	87.469
		5/0 + 2/6	92.969	93.469
		5/4 + 2/8	98.969	99.469
TRIPLE	STANDARD MULLION	5/8 + 2/10	104.969	105.469
		6/0 + 3/0	110.969	111.469
		7/0	86.470	86.970
		7/6	92.470	92.970
		8/0	98.470	98.970
		8/6	104.470	104.970
		9/0	110.470	110.970

		UNIT SIZE	INSWING "A"	OUTSWING "A"	
SINGLE WITH 1 VENTING SIDELITE	STANDARD MULLION	STANDARD LENGTHS	2/4 W/1-12"	41.877	N/A
			2/4 W/1-14"	43.877	N/A
			2/6 W/1-12"	43.877	N/A
			2/6 W/1-14"	45.877	N/A
			2/8 W/1-12"	45.877	N/A
			2/8 W/1-14"	47.877	N/A
			2/10 W/1-12"	47.877	N/A
			2/10 W/1-14"	49.877	N/A
			3/0 W/1-12"	49.877	N/A
			3/0 W/1-14"	51.877	N/A
SINGLE UNIT WITH TWO VENTING SIDELITES	WIDE MULLION	STANDARD LENGTHS	2/4 W/1-12"	55.564	N/A
			2/4 W/1-14"	59.564	N/A
			2/6 W/1-12"	57.564	N/A
			2/6 W/1-14"	61.564	N/A
			2/8 W/1-12"	59.564	N/A
			2/8 W/1-14"	63.564	N/A
			2/10 W/1-12"	61.564	N/A
			2/10 W/1-14"	65.564	N/A
			3/0 W/1-12"	63.564	N/A
			3/0 W/1-14"	67.564	N/A
FRENCH (7/8" ASTRAGAL) UNIT WITH VENTING SIDELITES	WIDE MULLION	STANDARD LENGTHS	4/8 W/2-12"	84.470	N/A
			4/8 W/2-14"	88.470	N/A
			5/0 W/2-12"	88.470	N/A
			5/0 W/2-14"	92.470	N/A
			5/4 W/2-12"	92.470	N/A
			5/4 W/2-14"	96.470	N/A
			5/8 W/2-12"	96.470	N/A
			5/8 W/2-14"	100.470	N/A
			6/0 W/2-12"	100.470	N/A
			6/0 W/2-14"	104.470	N/A

Frame Parts

Head Length

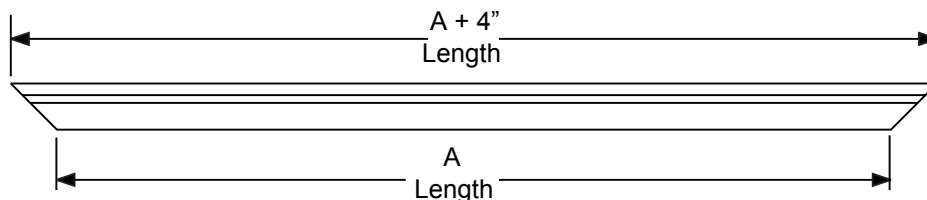


Frame Parts

			UNIT SIZE	INSWING "A"	OUTSWING "A"
SINGLE WITH 1 SIDELITE	STANDARD MULLION	STANDARD	2/4 W/1 12"	41.156	41.656
			2/4 W/1 14"	43.156	43.656
			2/6 W/1 12"	43.156	43.656
			2/6 W/1 14"	45.156	45.656
			2/8 W/1 12"	45.156	45.656
			2/8 W/1 14"	47.156	47.656
			2/10 W/1 12"	47.156	47.656
			2/10 W/1 14"	49.156	49.656
			3/0 W/1 12"	49.156	49.656
			3/0 W/1 14"	51.156	51.656
	BOXED/WIDE MULLION	STANDARD	2/4 W/1 12"	41.656	42.156
			2/4 W/1 14"	43.656	44.156
			2/6 W/1 12"	43.656	44.156
			2/6 W/1 14"	45.656	46.156
			2/8 W/1 12"	45.656	46.156
			2/8 W/1 14"	47.656	48.156
			2/10 W/1 12"	47.656	48.156
			2/10 W/1 14"	49.656	50.156
			3/0 W/1 12"	49.656	50.156
			3/0 W/1 14"	51.656	52.156
SINGLE WITH 2 SIDELITES	STANDARD MULLION	STANDARD	2/4 W/2 12"	54.156	54.656
			2/4 W/2 14"	58.156	58.656
			2/6 W/2 12"	56.156	56.656
			2/6 W/2 14"	60.156	60.656
			2/8 W/2 12"	58.156	58.656
			2/8 W/2 14"	62.156	62.656
			2/10 W/2 12"	60.156	60.656
			2/10 W/2 14"	64.156	64.656
			3/0 W/2 12"	62.156	62.656
			3/0 W/2 14"	66.156	66.656
	STANDARD MULLION	STANDARD	2/4 W/1 12"	55.156	55.656
			2/4 W/1 14"	59.156	59.656
			2/6 W/1 12"	57.156	57.656
			2/6 W/1 14"	61.156	61.656
			2/8 W/1 12"	59.156	59.656
			2/8 W/1 14"	63.156	63.656
			2/10 W/1 12"	61.156	61.656
			2/10 W/1 14"	65.156	65.656
			3/0 W/1 12"	63.156	63.656
			3/0 W/1 14"	67.156	67.656
			69.156	69.656	
			73.156	73.656	

			UNIT SIZE	INSWING "A"	OUTSWING "A"
FRENCH WITH 2 SIDELITES (7/8" ASTRAGAL)	WIDE MULLION	STANDARD	6/0 W/2-10"	96.062	96.562
			6/0 W/2-12"	100.062	100.562
			6/0 W/2-14"	104.062	104.562

Head Length

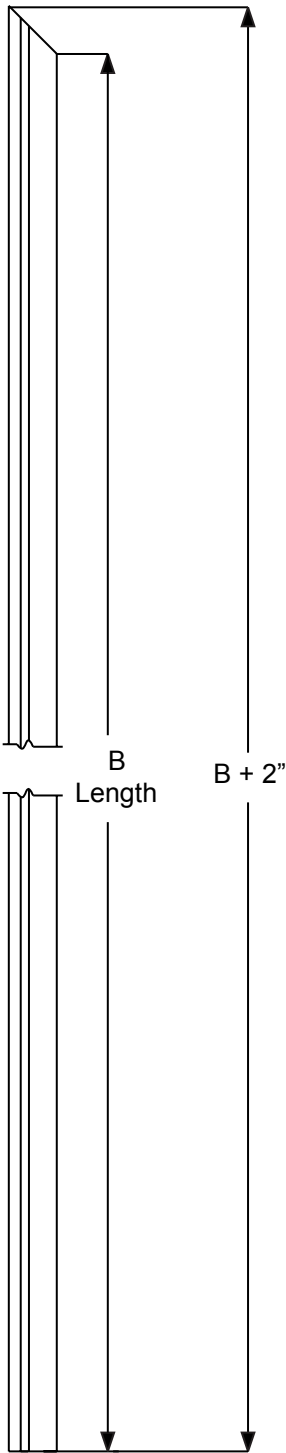


		INSWING
		"A"
SINGLE WITH ONE SIDELITE	UNIT SIZE	"A"
	3/0 W/1 10" SPREAD 0.000"	47.656
	3/0 W/1 10" SPREAD 0.250"	47.906
	3/0 W/1 10" SPREAD 0.500"	48.156
	3/0 W/1 10" SPREAD 0.750"	48.406
	3/0 W/1 10" SPREAD 1.000"	48.656
	3/0 W/1 10" SPREAD 1.250"	48.906
	3/0 W/1 10" SPREAD 1.500"	49.156
	3/0 W/1 10" SPREAD 1.750"	49.406
	3/0 W/1 10" SPREAD 2.000"	49.656
	3/0 W/1 10" SPREAD 2.250"	49.906
	3/0 W/1 10" SPREAD 2.500"	50.156
	3/0 W/1 10" SPREAD 2.750"	50.406
	3/0 W/1 10" SPREAD 3.000"	50.656
	3/0 W/1 12" SPREAD 0.000"	49.656
	3/0 W/1 12" SPREAD 0.250"	49.906
	3/0 W/1 12" SPREAD 0.500"	50.156
	3/0 W/1 12" SPREAD 0.750"	50.406
	3/0 W/1 12" SPREAD 1.000"	50.656
	3/0 W/1 12" SPREAD 1.250"	50.906
	3/0 W/1 12" SPREAD 1.500"	51.156
	3/0 W/1 12" SPREAD 1.750"	51.406
	3/0 W/1 12" SPREAD 2.000"	51.656
	3/0 W/1 12" SPREAD 2.250"	51.906
	3/0 W/1 12" SPREAD 2.500"	52.156
	3/0 W/1 12" SPREAD 2.750"	52.406
	3/0 W/1 12" SPREAD 3.000"	52.656
	3/0 W/1 14" SPREAD 0.000"	51.656
	3/0 W/1 14" SPREAD 0.250"	51.906
	3/0 W/1 14" SPREAD 0.500"	52.156
3/0 W/1 14" SPREAD 0.750"	52.406	
3/0 W/1 14" SPREAD 1.000"	52.656	
3/0 W/1 14" SPREAD 1.250"	52.906	
3/0 W/1 14" SPREAD 1.500"	53.156	
3/0 W/1 14" SPREAD 1.750"	53.406	
3/0 W/1 14" SPREAD 2.000"	53.656	
3/0 W/1 14" SPREAD 2.250"	53.906	
3/0 W/1 14" SPREAD 2.500"	54.156	
3/0 W/1 14" SPREAD 2.750"	54.406	
3/0 W/1 14" SPREAD 3.000"	54.656	

		INSWING
		"A"
SINGLE WITH TWO SIDELITES	UNIT SIZE	"A"
	3/0 W/2 10" SPREAD 0.000"	59.156
	3/0 W/2 10" SPREAD 0.250"	59.656
	3/0 W/2 10" SPREAD 0.500"	60.156
	3/0 W/2 10" SPREAD 0.750"	60.656
	3/0 W/2 10" SPREAD 1.000"	61.156
	3/0 W/2 10" SPREAD 1.250"	61.656
	3/0 W/2 10" SPREAD 1.500"	62.156
	3/0 W/2 10" SPREAD 1.750"	62.656
	3/0 W/2 10" SPREAD 2.000"	63.156
	3/0 W/2 10" SPREAD 2.250"	63.656
	3/0 W/2 10" SPREAD 2.500"	64.156
	3/0 W/2 10" SPREAD 2.750"	64.656
	3/0 W/2 10" SPREAD 3.000"	65.156
	3/0 W/2 12" SPREAD 0.000"	63.156
	3/0 W/2 12" SPREAD 0.250"	63.656
	3/0 W/2 12" SPREAD 0.500"	64.156
	3/0 W/2 12" SPREAD 0.750"	64.656
	3/0 W/2 12" SPREAD 1.000"	65.156
	3/0 W/2 12" SPREAD 1.250"	65.656
	3/0 W/2 12" SPREAD 1.500"	66.156
	3/0 W/2 12" SPREAD 1.750"	66.656
	3/0 W/2 12" SPREAD 2.000"	67.156
	3/0 W/2 12" SPREAD 2.250"	67.656
	3/0 W/2 12" SPREAD 2.500"	68.156
	3/0 W/2 12" SPREAD 2.750"	68.656
	3/0 W/2 12" SPREAD 3.000"	69.156
	3/0 W/2 14" SPREAD 0.000"	67.156
	3/0 W/2 14" SPREAD 0.250"	67.656
	3/0 W/2 14" SPREAD 0.500"	68.156
3/0 W/2 14" SPREAD 0.750"	68.656	
3/0 W/2 14" SPREAD 1.000"	69.156	
3/0 W/2 14" SPREAD 1.250"	69.656	
3/0 W/2 14" SPREAD 1.500"	70.156	
3/0 W/2 14" SPREAD 1.750"	70.656	
3/0 W/2 14" SPREAD 2.000"	71.156	
3/0 W/2 14" SPREAD 2.250"	71.656	
3/0 W/2 14" SPREAD 2.500"	72.156	
3/0 W/2 14" SPREAD 2.750"	72.656	
3/0 W/2 14" SPREAD 3.000"	73.156	

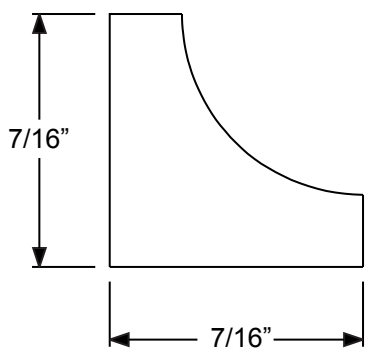
Frame Parts

Side Length

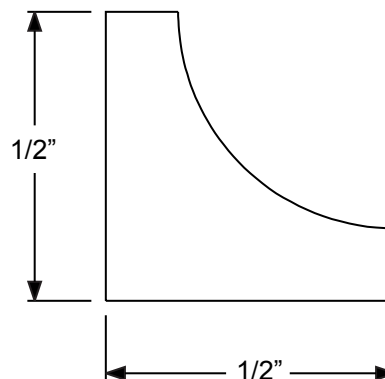


Frame Parts

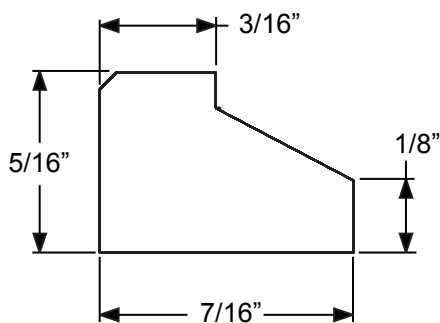
	Unit Size	"B"
Inswing	6/6	78.733
	6/8	81.281
	7/0	85.281
	8/0	97.281
Outswing (Composite)	6/6	78.121
	6/8	80.669
	7/0	84.669
	8/0	96.669
Outswing (Aluminum)	6/6	77.546
	6/8	80.094
	7/0	84.094
	8/0	96.094
Inswing Units with Transoms	6/8	94.75



Sidelite



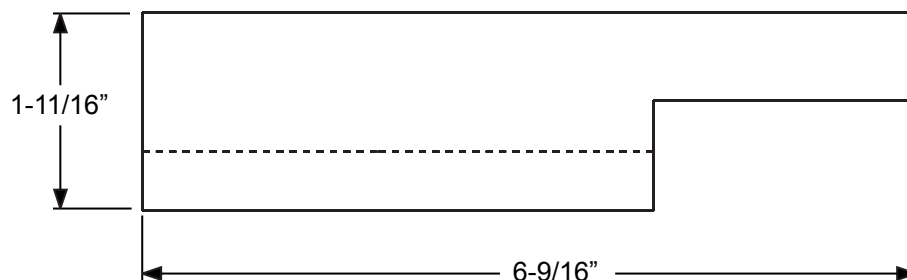
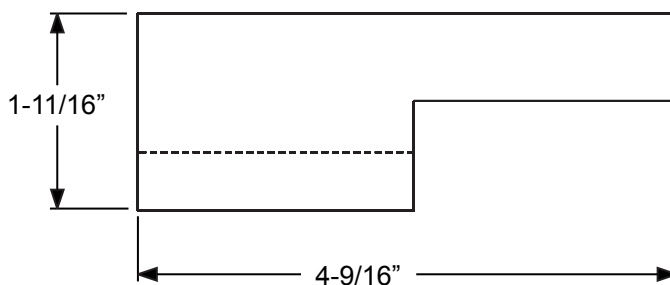
Transom



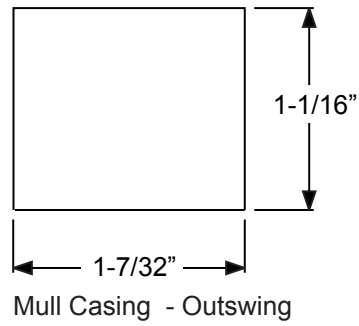
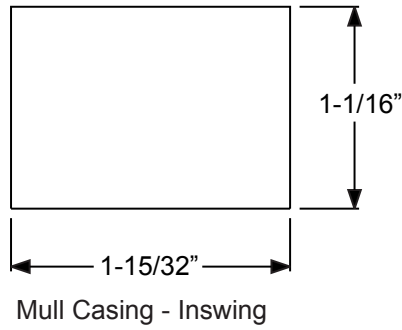
**High Heat Composite
(for outswing applications)**

Frame Parts

**Head Jamb Seal Pad
4-9/16" and 6-9/16" Jamb**



Mull Casing

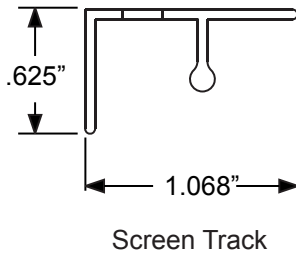


Length: Standard = 81-1/4"
Transom = 95-3/4"
8/0 Height = 98"

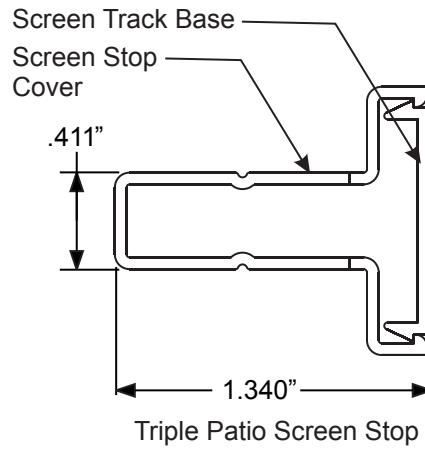
Wood Mull Casing

Frame Parts

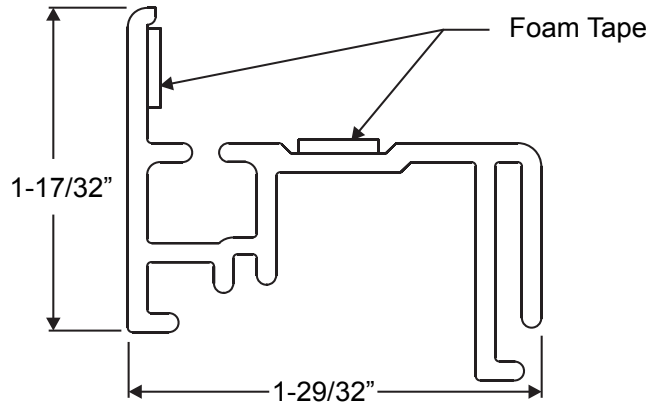
Screen Track and Stop



	Size	Length
Standard Mullion	4/8	57.250
	5/0	61.250
	5/4	65.250
	5/8	69.250
	6/0	73.250
Wide Mullion	4/8	57.750
	5/0	51.750
	5/4	65.750
	5/8	69.750
	6/0	73.750

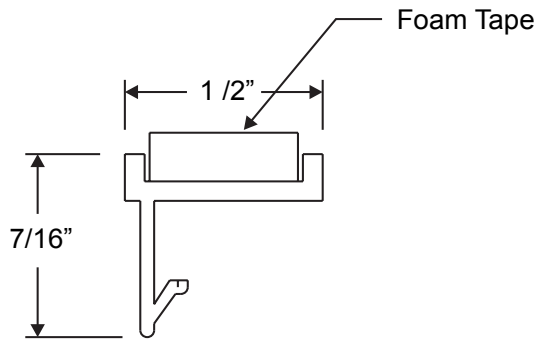


	Base Length	Cover Length
6/6	77.344	78.109
6/8	79.891	80.656
7/0	83.891	84.656
8/0	95.891	96.656



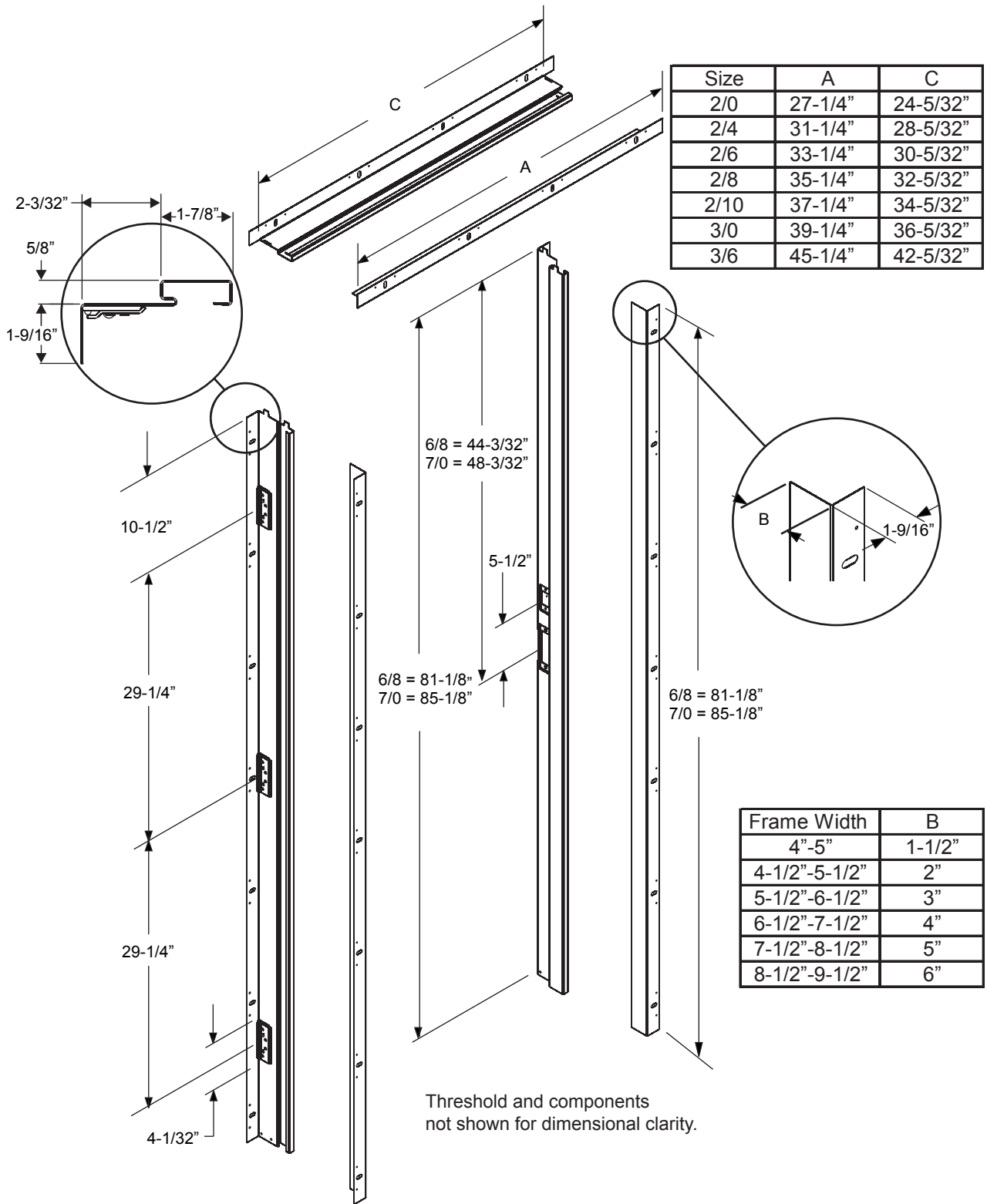
**Bottom Trim
Length = 37"**

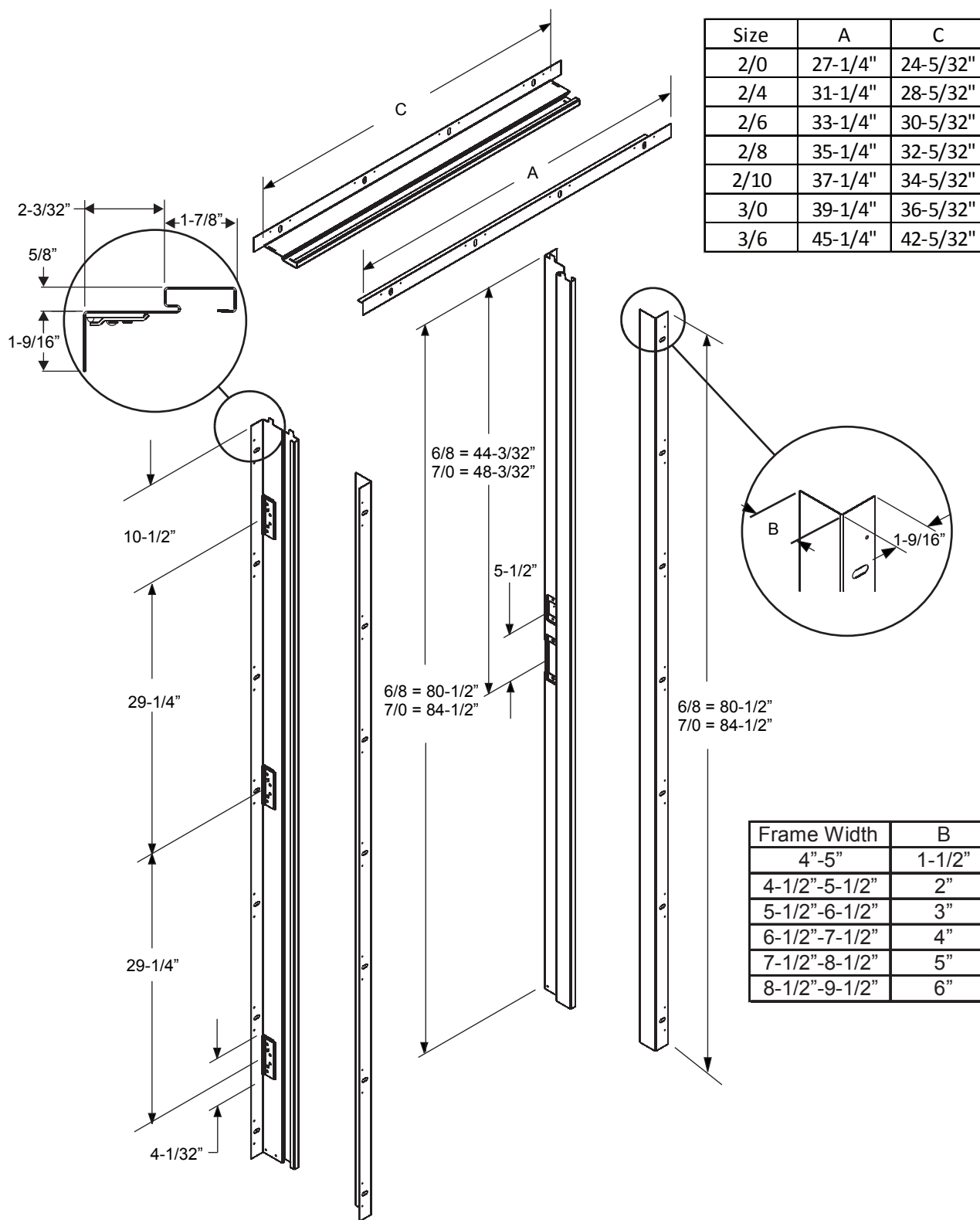
Frame Parts



**Direct Set Sidelite Trim Kit
Length = 80" or 96"**

Standard Adjusta-Fit[®] 2 - Inswing





Frame Parts

Standard Adjusta-Fit[®] 2 - No Sill

