

Safe and Secure Entries

The statistics are almost shocking: according to the U.S. Department of Justice and the FBI, there are approximately 8,600 residential break-ins *every day* in the U.S. – or one every 10 seconds. Most unlawful entry is – not surprisingly – through a doorway, with entry doors and patio doors the points of entry in 34 percent and 22 percent of break-ins, respectively.

Therma-Tru is leading the fiberglass door industry in safety and security enhancements to its entry and patio door systems, introducing new features like multi-point locking systems and a security strike plate.

Tru-Performance

THE THERMA-TRU DOORS RESEARCH SERIES



Multi-Point Locking Systems

The Home Safety Council reports that unlocked or improperly locked doors and windows are responsible for nearly half of all home break-ins. Therma-Tru's Multi-Point Locking System enhances security because the lock engages the frame at several points, rather than only at the strike plate. It also keeps the door panel seated squarely in the frame, ensuring proper alignment and weather sealing even if the house settles.

This photo shows a Classic-Craft® entry system with optional Multi-Point Locking System. Notice the locking mechanism at the top of the door; there is a similar lock at the bottom, as well, engaging the jamb at three points instead of just one.

See Security, over

Fiberglass Fire Doors

Protection from forced entry and inclement weather are just two of the ways Therma-Tru door systems help builders and door contractors protect their homeowner customers. Therma-Tru has also spent considerable time researching and developing fire-rated fiberglass doors and hardware at the Advanced Technology Center.

In the positive pressure fire test conducted for Therma-Tru at an independent, certified laboratory, one side of the door is subjected to 1,800 degrees Fahrenheit for a time depending on the required rating, ranging from 20 minutes for a garage-to-home entry door to 90 minutes for some commercial applications. After the time limit passes with no sustained flame coming through the door, the heated side is subjected to a severe hose stream test where water under high pressure is shot at the door skin for a time commensurate with the rating being tested.

Therma-Tru currently offers 20-minute positive pressure fiberglass fire doors, and is in development of fully qualified 45- and 90-minute positive pressure fiberglass fire doors.



Fiber-Classic®
Fire-Rated Door

THERMA TRU
DOORS

The Most Preferred Brand in the Business™

Hurricane Performance: DP Ratings

In the wake of Hurricane Andrew in 1992, the State of Florida adopted some of the toughest building codes in the U.S., with requirements including minimum design pressure, or DP ratings. Those ratings were updated in 2002 to adopt the national wind protection standard developed by the American Society of Civil Engineers: ASCE 7-98, Minimum Design Loads for Buildings and Other Structures. The standard requires significant building design and construction changes in certain areas of the state.

Design Pressure is generally expressed in two numbers – one positive, one negative. The positive number is the standard for wind blowing *at* the structure, while the negative number represents the vacuum pressure on the opposite

side of the structure. To test a door system for DP, technicians put the system through a cycle that includes both positive and negative air pressure. Given the complexity of Florida's building codes and DP requirements for door systems, Therma-Tru has 52 Dade County approvals covering hundreds of product configurations, with a maximum DP rating of +/- 100 – corresponding to wind loads of over 250 mph.



Security, cont.

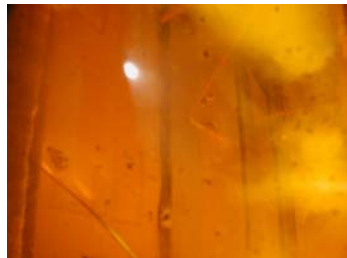
The Multi-Point Locking System is offered on many of Therma-Tru's fiberglass entry and patio door systems, including the Classic-Craft® Oak Collection™, Mahogany Collection™, Rustic Collection™ and the new American Style Collection™; and Fiber-Classic® hinged and sliding patio door systems.

Security Strike Plate

Beyond the locking system, Therma-Tru uses a proprietary adjustable security strike plate – pictured at left – that withstands 450 pounds of force. Both the Multi-Point Locking System and the proprietary strike plate are engineered to function as part of a whole Therma-Tru entry system.

For more information on Therma-Tru's entry and patio system features, visit www.thermatru.com.

Therma-Tru's Positive Pressure Test for Fire-Rated Doors



In these photos, you can see the heat and water portions of the positive pressure fire test. The first photo (left to right) demonstrates three Therma-Tru fiberglass entry doors subjected to 1,800-degree temperatures (the fire is on the opposite side of the doors); the second is shot of the doors from inside the furnace during the test; the third photo shows the high-pressure stream test in which the doors are cooled.

Therma-Tru Unveils New Classic-Craft® American Style™ Entry System

The new American Style Collection by Therma-Tru Doors is a reflection of traditional Craftsman style. Available later this year, the Collection provides structural simplicity; understated, straightforward style; with fiberglass performance.

Craftsman style is derived from the Arts and Craft Movement, which was one of the most influential North American building design styles of the 20th century. Stylistically, it marks the advent of modern industrial design and a return to nature. The concept of the craftsman style is very simple designs that don't require symmetry.

The craftsman-style door is designed with vertical groove, straight graining, clean and simple lines and square wood edges. New decorative glass options include Villager and Homeward. Flush-glazed fiberglass doors feature the glass assembled directly into the door panel during manufacturing, making the door and glass one solid piece.

Classic-Craft fiberglass door systems provide the texture and feel of a real wood door and can be stained with the Therma-Tru Finishing System or painted.

For more information about Tru-Performance: The Therma-Tru Doors Research Series, please contact Ann Krebs at 419.891.7426 or akrebs@thermatru.com