

THERMA TRU®

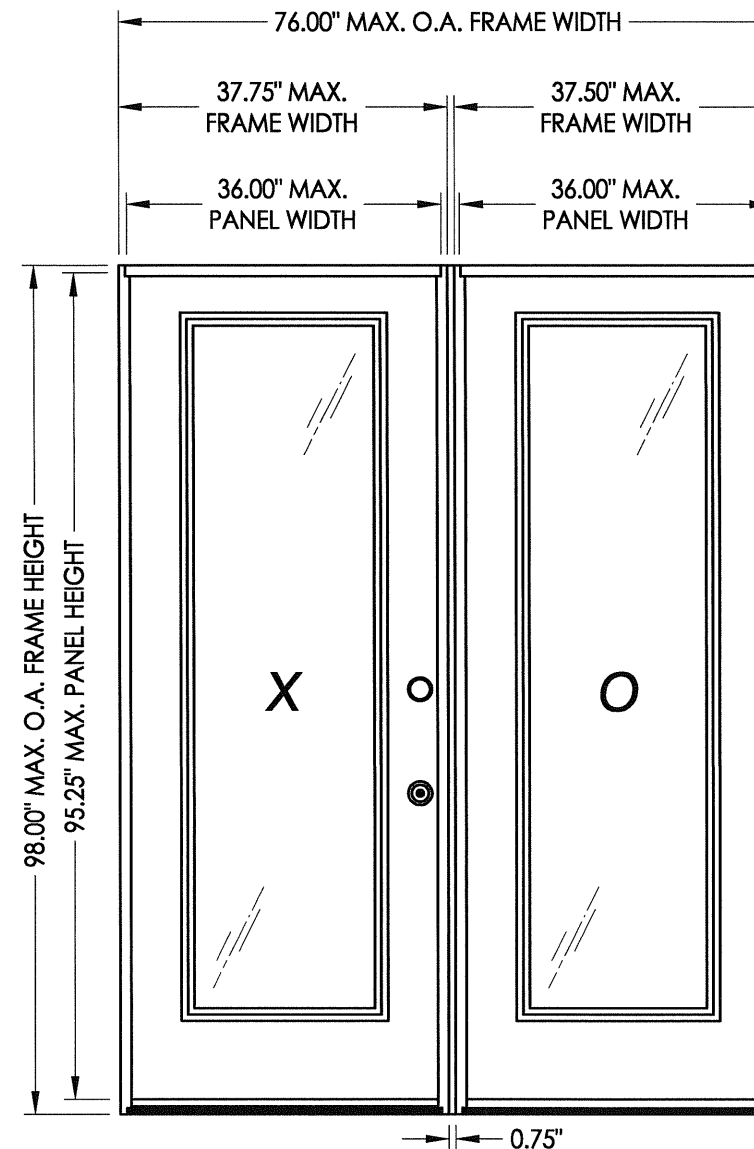
THERMA TRU DOORS

118 INDUSTRIAL DR., EDGERTON, OH 43517
TEL. (419)298-1740

"PROFILES" GLAZED STEEL DOOR W/ SIDELITE IN SWING / OUT SWING "IMPACT"

GENERAL NOTES

1. This product has been evaluated and is in compliance with the 2007 Florida Building Code (FBC) structural requirements including the "High Velocity Hurricane Zone" (HVHZ).
2. Product anchors shall be as listed and spaced as shown on details. Anchor embedment to base material shall be beyond wall dressing or stucco.
3. When used in the "HVHZ" this product complies with section 1626 of the Florida Building Code and does not require an impact resistant covering.
4. When used in areas outside of the "HVHZ" requiring wind borne debris protection this product complies with Section 1609.1.2 of the 2007 FBC and does not require an impact resistant covering. This product meets missile level "D" and includes Wind Zone 4 as defined in ASTM E1996.
5. For 2x stud framing construction, anchoring of these units shall be the same as that shown for 2x buck masonry construction.
6. Site conditions that deviate from the details of this drawing require further engineering analysis by a licensed engineer or registered architect.
7. Outswing configurations using coastal outswing item #31 meet water infiltration requirements for "HVHZ".
8. Inswing configurations and outswing configurations using item #18 or item #33 do not meet the water infiltration requirements for the "HVHZ" and shall be installed only in non-habitable areas or at habitable locations protected by an overhang or canopy such that the angle between the edge of canopy or overhang to sill is less than 45 degrees."



"PREMIUM" SERIES DOORS
(XO configuration shown, OX also app'd)

SWING	OVERALL FRAME DIMENSION	OVERALL D.L.O. DOOR / SIDELITE DIMENSION	DESIGN PRESSURE (PSF)	
			POSITIVE	NEGATIVE
IN SWING	76.00" x 98.00"	21.00" x 78.75"	+47.0	-50.0
OUT SWING	76.00" x 96.75"	21.00" x 78.75"	+47.0	-47.0

TABLE OF CONTENTS	
SHEET #	DESCRIPTION
1	Typical elevations, design pressures & general notes
2	Door panel construction details & glazing detail
3	Sidelite panel construction details & glazing detail
4	Horizontal cross sections
5	Vertical cross sections
6	Vertical cross sections
7	Buck anchoring & Frame anchoring 2X buck masonry construction
8	Frame anchoring 1X buck masonry construction
9	Components
10	Bill of materials

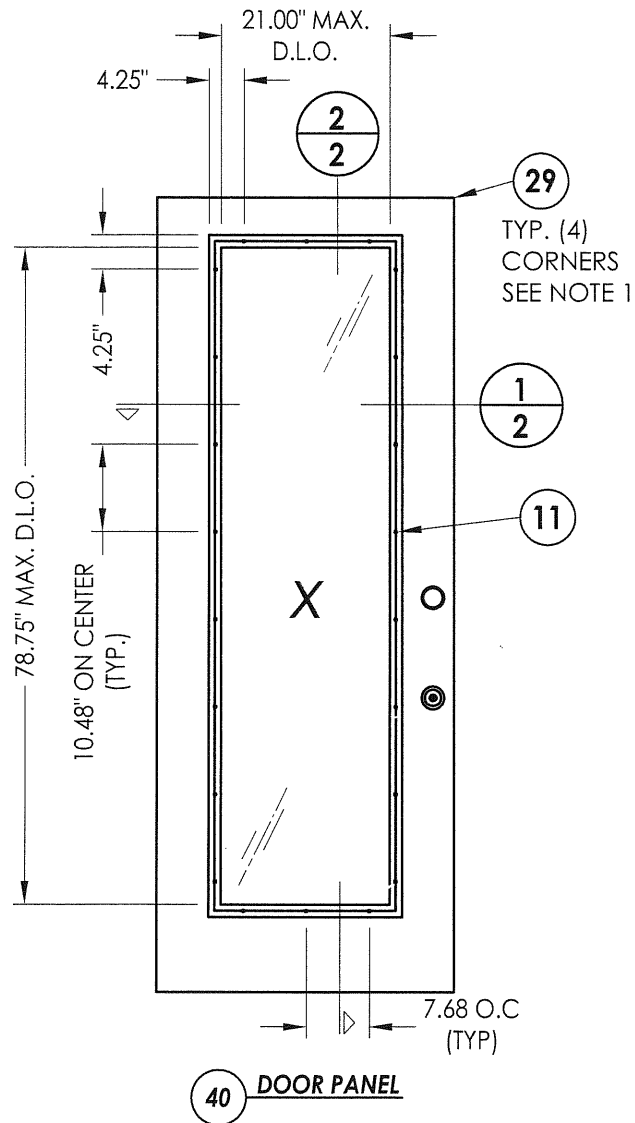
Documents Prepared By:

RW BUILDING CONSULTANTS, INC.
P.O. Box 230 Valrico FL 33595
Phone No.: 813.659.9197
Florida Board of Professional Engineers
Certificate Of Authorization No. 9813
Wendell W. Haney, P.E. No. 5-20-08

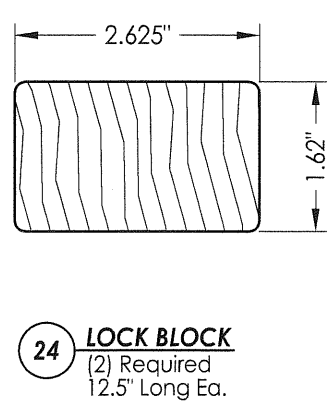
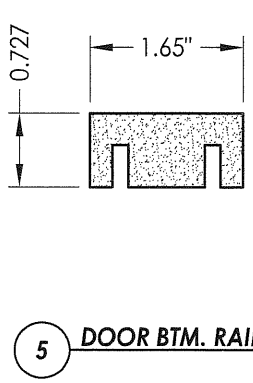
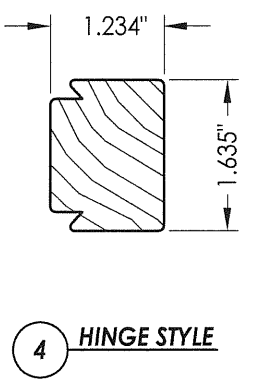
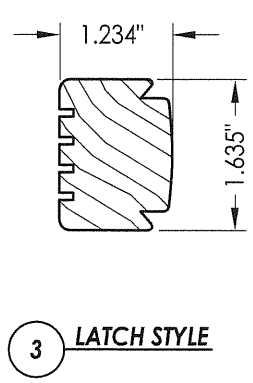
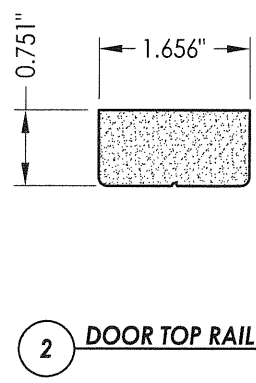
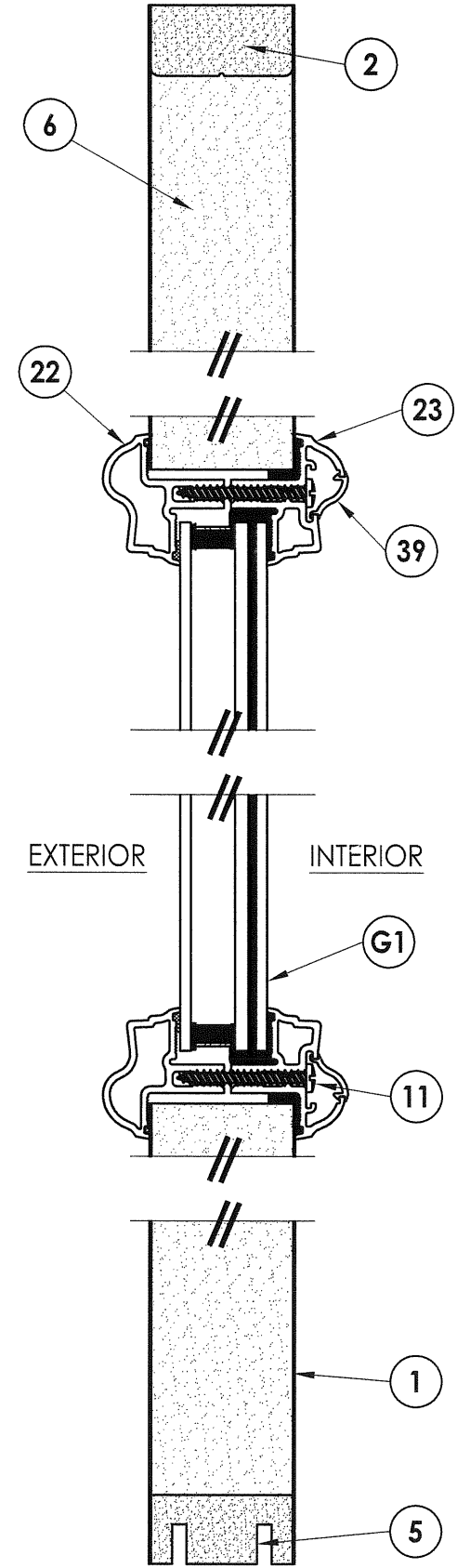
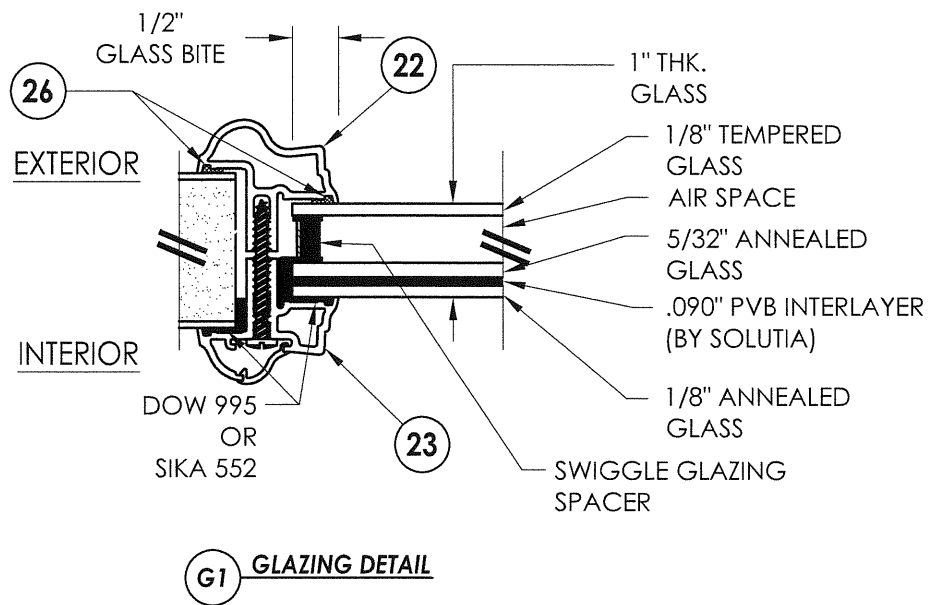
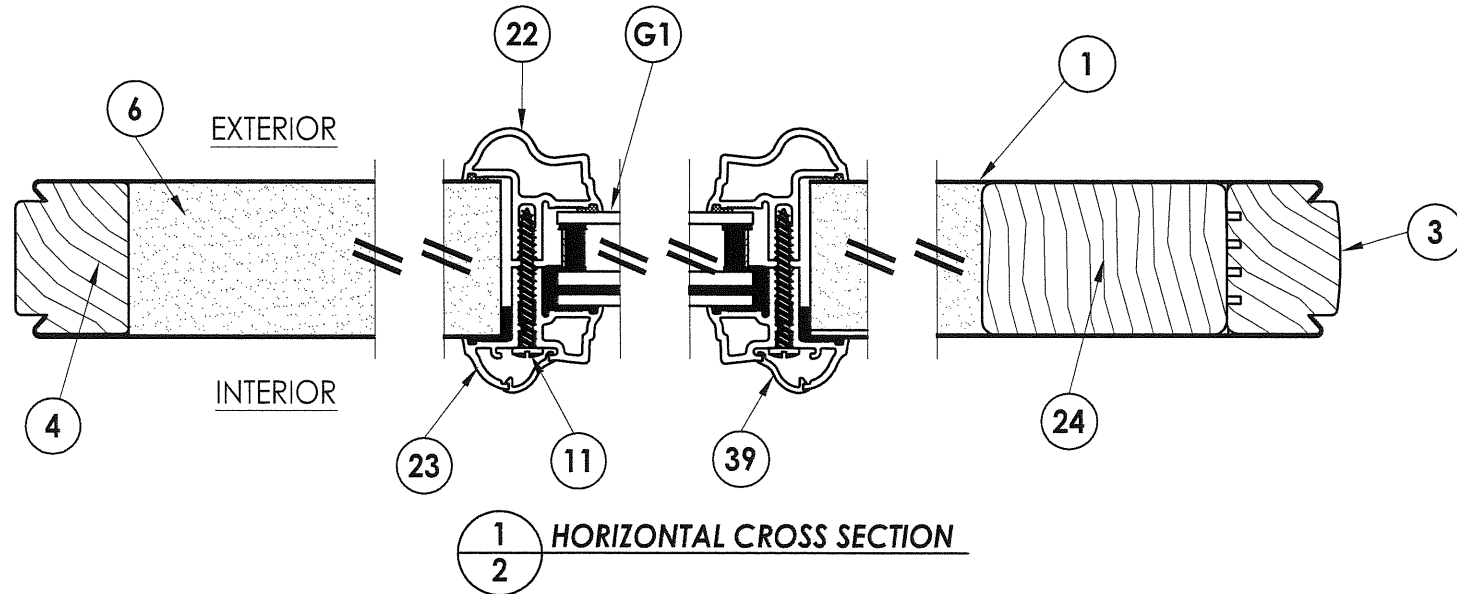
PRODUCT: THERMA-TRU GLAZED STEEL DOOR W/ SIDELITE
PART OR ASSEMBLY: TYPICAL ELEVATION, DESIGN PRESSURES & GENERAL NOTES

NO.	DATE	BY	REVISIONS

DATE: 4/23/08
SCALE: N.T.S.
DWG. BY: JK
CHK. BY: WWH
DRAWING NO.: FL-7586.2
SHEET 1 of 10



NOTE:
 1. ITEM #29 #9 x 3" PFH W.S. LOCATE THRU DOOR STYLES INTO TOP & BOTTOM RAILS TYP. (4) CORNER AS SHOWN.



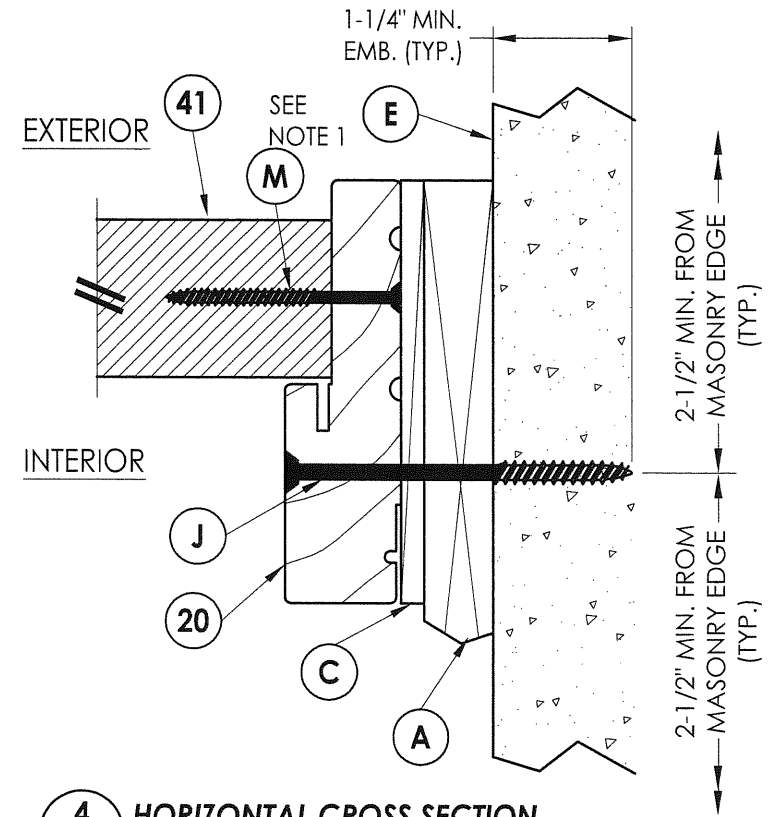
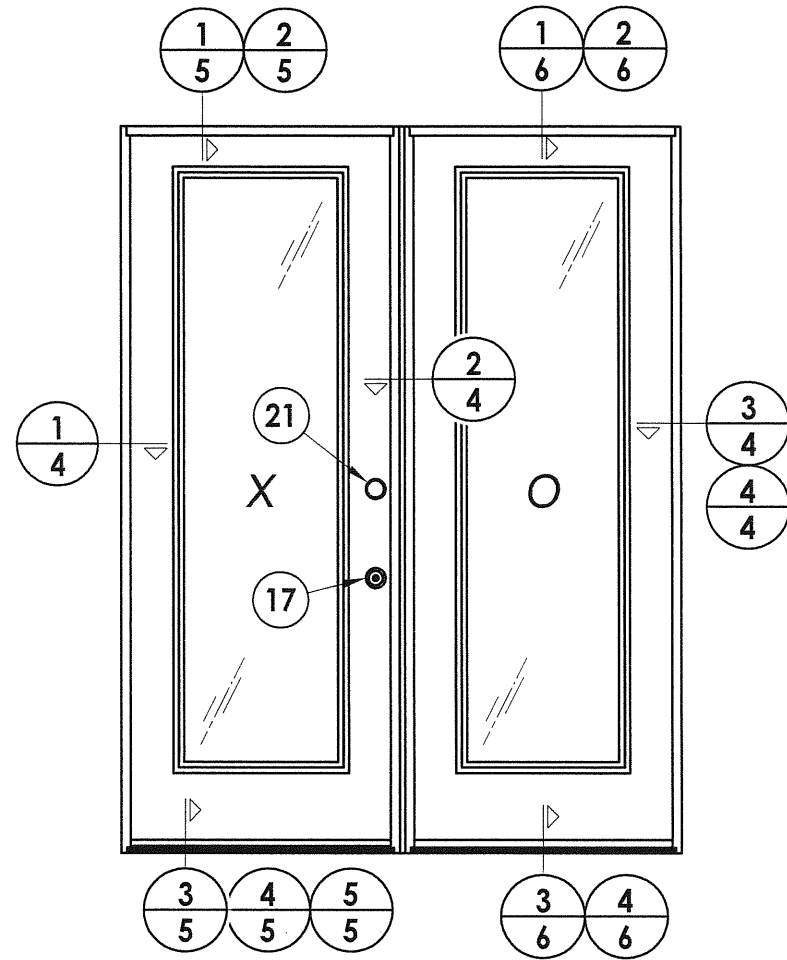
Documents Prepared By:
RW BUILDING CONSULTANTS, INC.
 P.O. Box 230 Valrico FL 33595
 Phone No.: 813.659.9197
 Florida Board of Professional Engineers
 Certificate of Authorization No. 9813
Wendell W. Hamley 5-20-08
 Wendell W. Hamley, P.E. No. 54158

PRODUCT: THERMA-TRU GLAZED STEEL DOOR W/SIDELITE
 PART OR ASSEMBLY: DOOR PANEL CONSTRUCTION DETAILS & GLAZING DETAIL

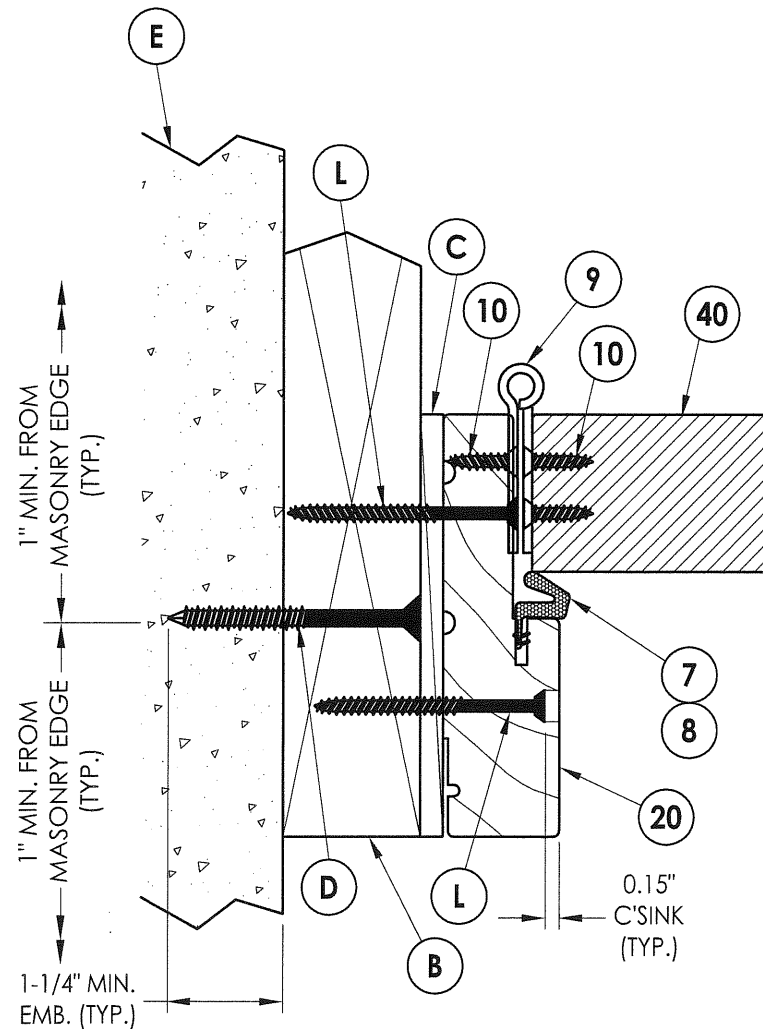
NO.	DATE	BY

DATE: 4/23/08
 SCALE: N.T.S.
 DWG. BY: JK
 CHK. BY: WWH
 DRAWING NO.: FL-7586.2
 SHEET 2 OF 10

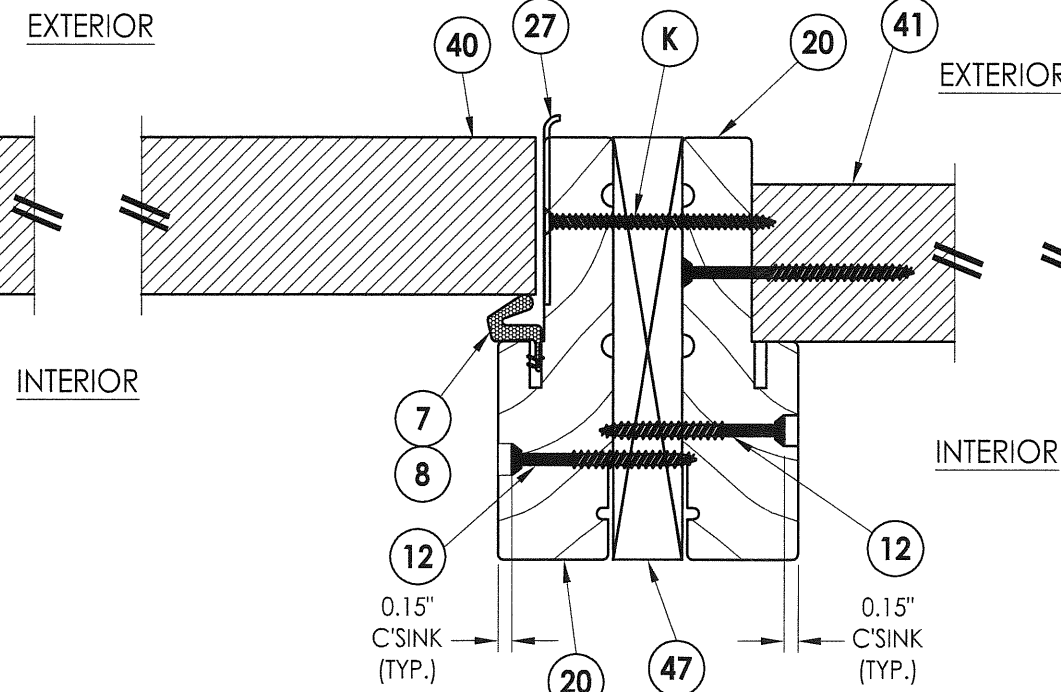
NOTE:
 1. Sidelite assy. fastener, 6" from each end and 4 more screws equally spaced between (6 screws total per jamb)



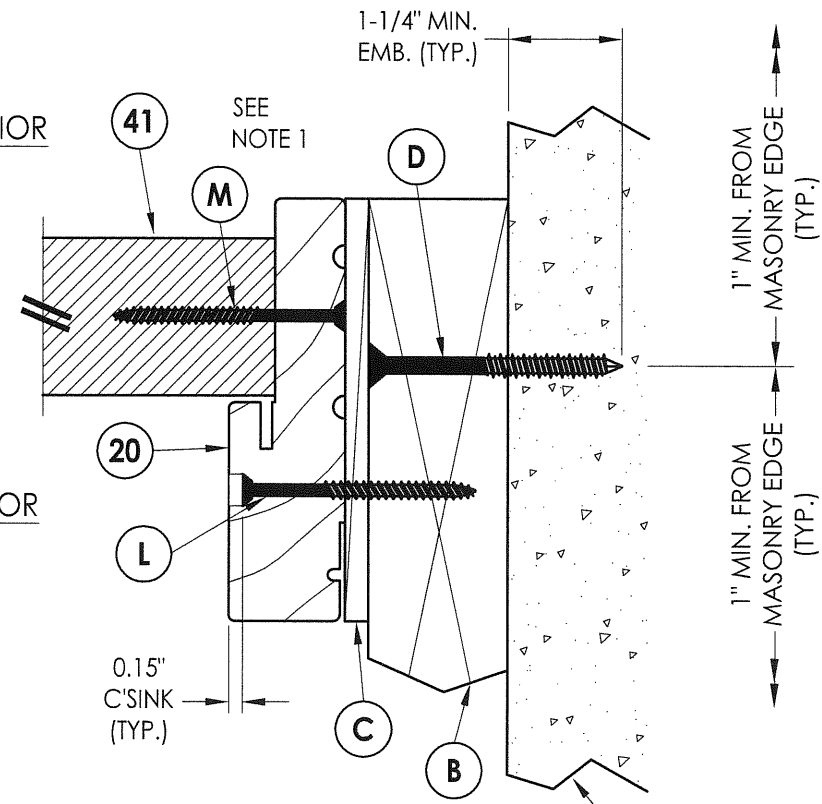
4 HORIZONTAL CROSS SECTION
 4 Shown w/1X sub-buck substituting concrete screws for wood screws per Section 1714.5.4.2 of the FBC



1 HORIZONTAL CROSS SECTION
 4 Inswing configuration



2 HORIZONTAL CROSS SECTION
 4 Inswing configuration



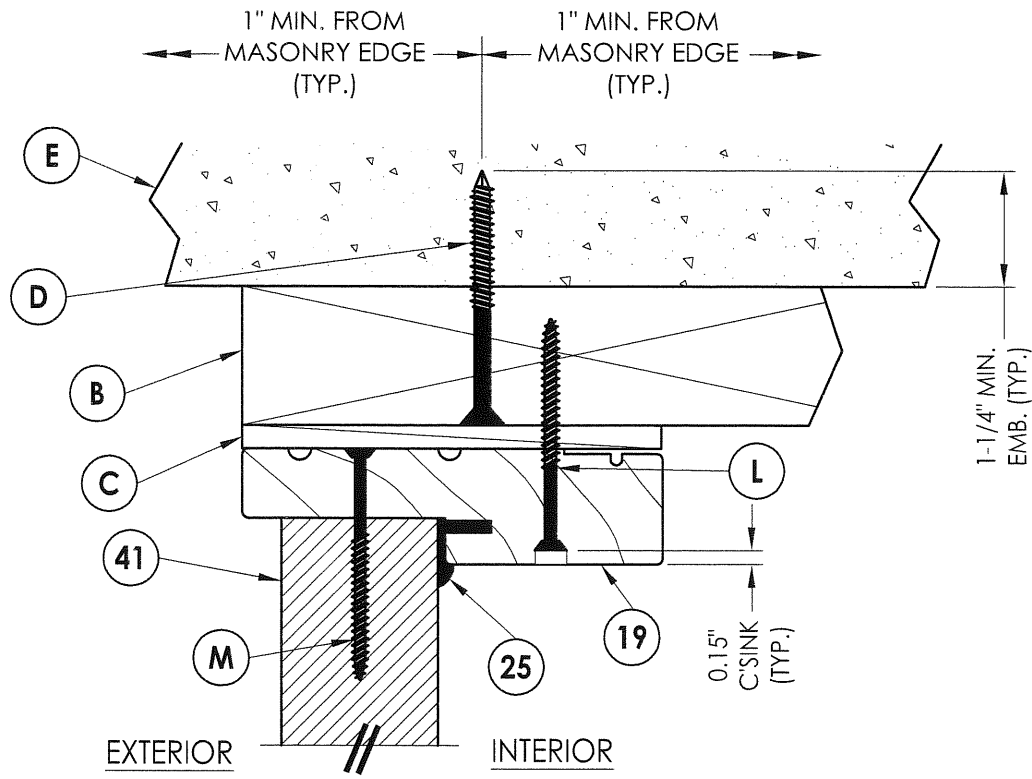
3 HORIZONTAL CROSS SECTION
 4

Documents Prepared By:
RW BUILDING CONSULTANTS, INC.
 P.O. Box 230 Valrico FL, 33595
 Phone No.: 813.659.9197
 Florida Board of Professional Engineers
 Certificate Of Authorization No. 9813
Wendell W. Haney 5-20-08
 Wendell W. Haney, P.E. No. 54158

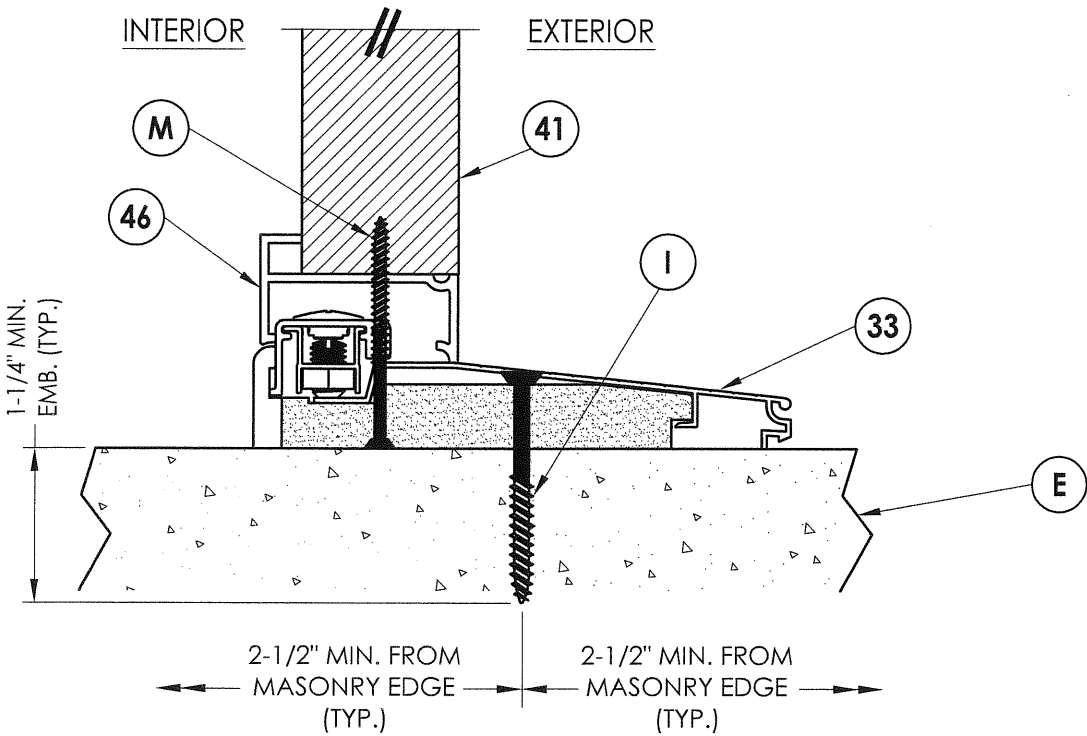
PRODUCT: THERMA-TRU GLAZED STEEL DOOR W/SIDELITE
 PART OR ASSEMBLY: HORIZONTAL CROSS SECTION

NO.	DATE	BY	REVISIONS

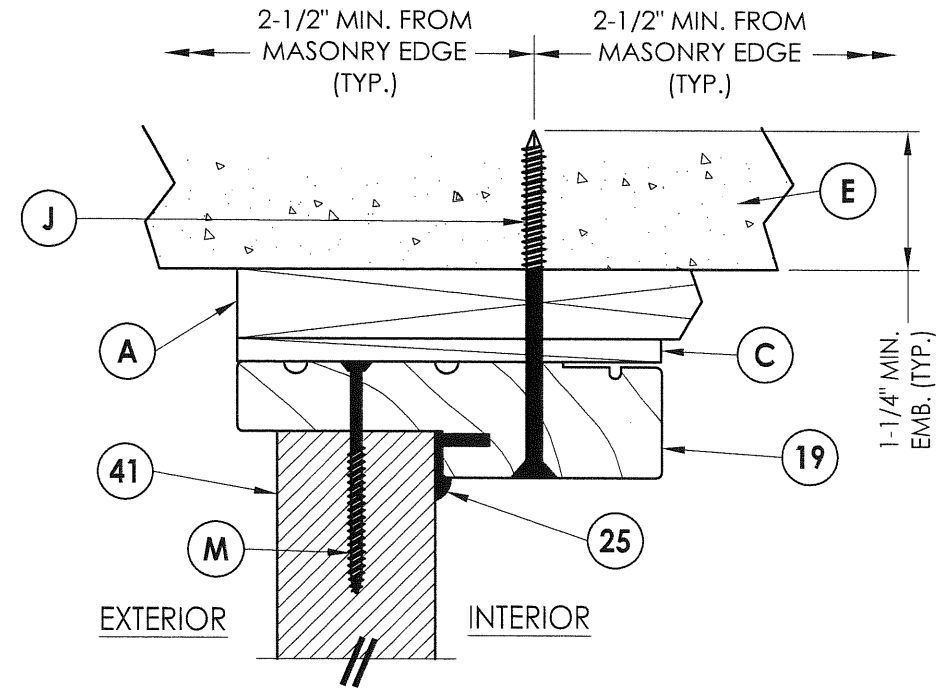
DATE: 4/23/08
 SCALE: N.T.S.
 DWG. BY: JK
 CHK. BY: WWH
 DRAWING NO.: FL-7586.2
 SHEET 4 OF 10



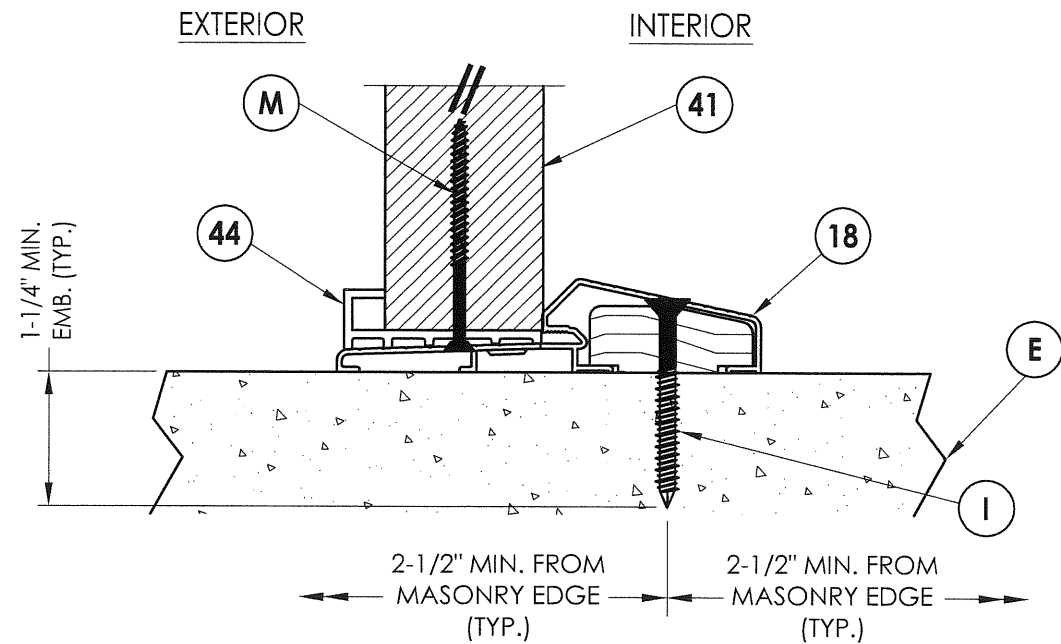
1 VERTICAL CROSS SECTION
6



3 VERTICAL CROSS SECTION
6 Inswing configuration



2 VERTICAL CROSS SECTION
6 Shown w/1X sub-buck substituting concrete screws for wood screws per Section 1714.5.4.2 of the FBC



4 VERTICAL CROSS SECTION
6 Outswing configuration

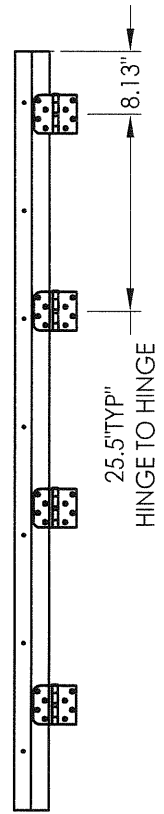
Documents Prepared By:
RW BUILDING CONSULTANTS, INC.
 P.O. Box 230 Vairico FL 33595
 Phone No.: 813.659.9197
 Florida Board of Professional Engineers
 Certificate Of Authorization No. 9813
Wendell W. Higney 5-20-08
 Wendell W. Higney, P.E. No. 54158

PRODUCT: THERMA-TRU GLAZED STEEL DOOR W/ SIDELITE
 PART OR ASSEMBLY: VERTICAL CROSS SECTIONS

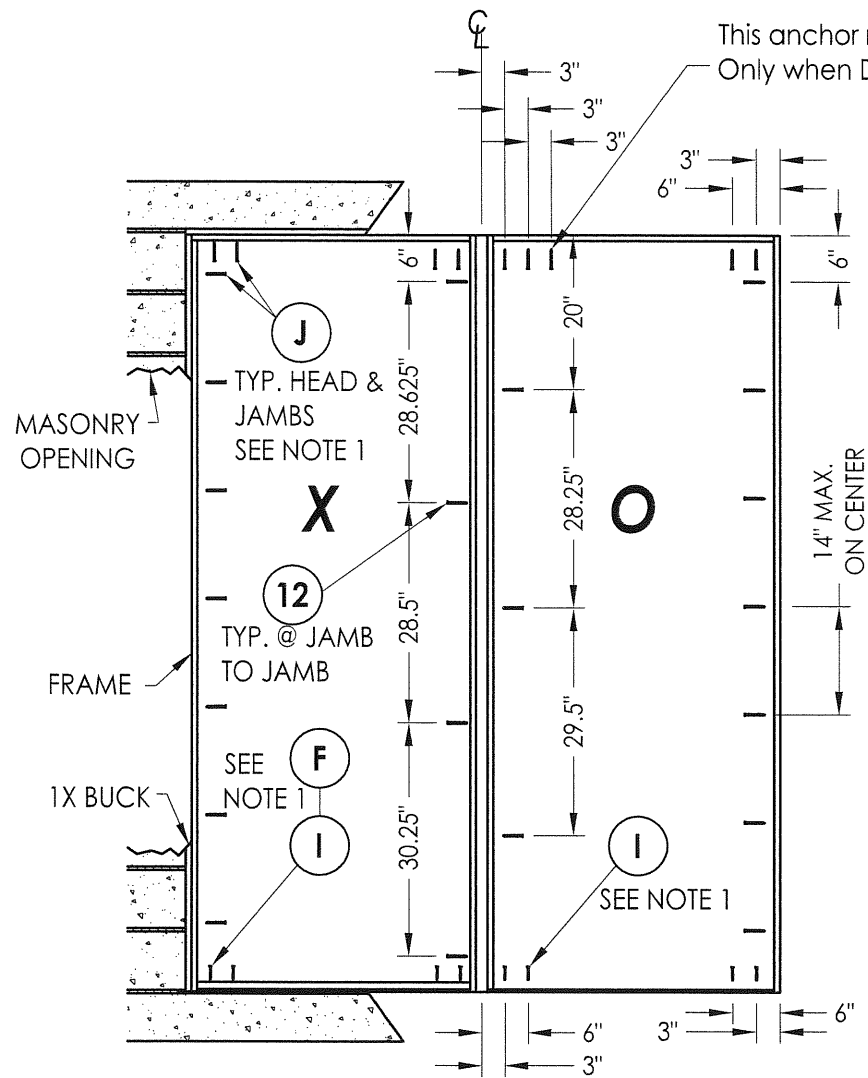
NO.	DATE	BY

DATE: 4/23/08
 SCALE: N.T.S.
 DWG. BY: JK
 CHK. BY: WWH
 DRAWING NO.: FL-7586.2
 SHEET 6 OF 10

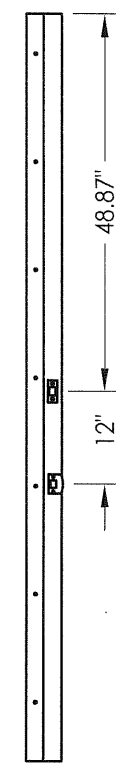
K:\A - Projects\Project Folders\Proj 1001-1100\p1021\11-7586\FL-7586.dwg, Model



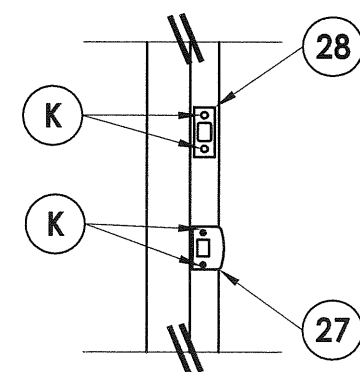
HINGE JAMB



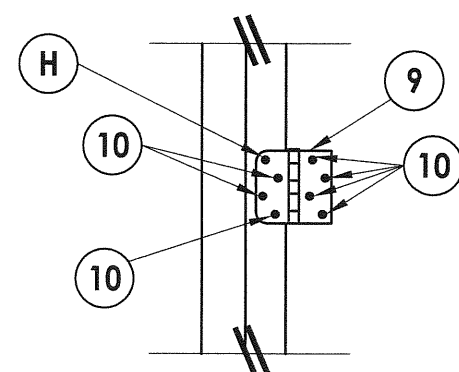
FRAME ANCHORING
Masonry 1X buck construction



STRIKE JAMB



LATCH & DEADBOLT DETAIL



HINGE DETAIL

This anchor required
Only when DP > 45 PSF

NOTES:

1. 1/4" ITW concrete screws anchoring frame and/or sill require a minimum 2-1/2" clearance to masonry edges, a 1-1/4" minimum embedment and a minimum 3" clearance to adjacent concrete screws. Substitution of equal concrete screws from a different supplier may have different edge distance and center distance requirements. Concrete screw locations at the corners and mullion may be adjusted to maintain the minimum edge distance to mortar joints. If Concrete screw locations noted as "MAX. ON CENTER" must be adjusted to maintain the minimum edge distance to mortar joints, additional Concrete screws may be required to ensure the maximum on center dimension is not exceeded.

Documents Prepared By:
RW BUILDING CONSULTANTS, INC.
P.O. Box 230 Valrico FL 33595
Phone No.: 813.659.9197
Florida Board of Professional Engineers
Certificate Of Authorization No. 9813
Wendell W. Harty 5-22-08
Wendell W. Harty, P.E. No. 54158

PRODUCT: THERMA-TRU
GLAZED STEEL DOOR
W/ SIDELITE
PART OR ASSEMBLY:
FRAME ANCHORING 1X BUCK
MASONRY CONSTRUCTION

NO.	DATE	BY	REVISIONS

DATE: 4/15/08
SCALE: N.T.S.
DWG. BY: JK
CHK. BY: WWH
DRAWING NO.:
FL-7586.2
SHEET 8 OF 10

