

THERMA-TRU CORPORATION

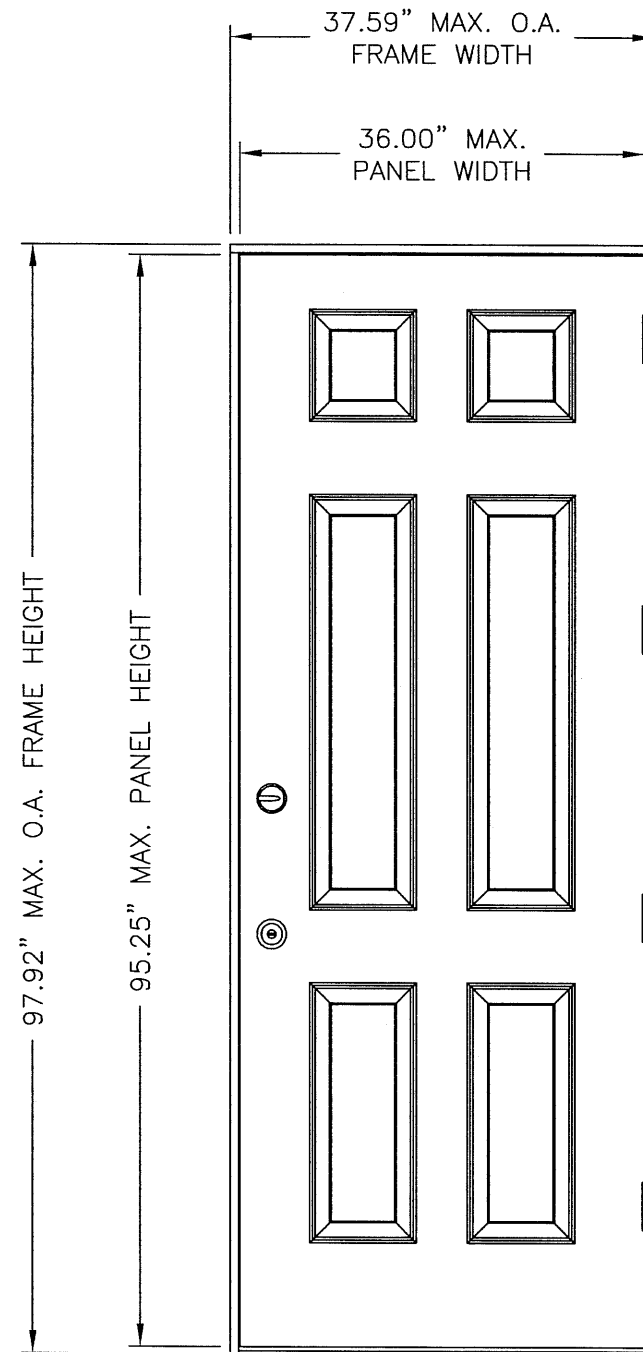
118 INDUSTRIAL DRIVE
 EDGERTON, OHIO 43517
 PH. (419) 298-1740

**3'0 X 8'0
 "CLASSIC CRAFT"
 FIBERGLASS SINGLE DOOR
 INSWING / OUTSWING
 "IMPACT"**

GENERAL NOTES

1. THIS PRODUCT HAS BEEN EVALUATED AND IS IN COMPLIANCE WITH THE FLORIDA BUILDING CODE EXCLUDING THE "HIGH VELOCITY HURRICANE ZONE".
2. PRODUCT ANCHORS SHALL BE AS LISTED AND SPACED AS SHOWN ON DETAILS. ANCHOR EMBEDMENT TO BASE MATERIAL SHALL BE BEYOND WALL DRESSING OR STUCCO.
3. WHEN USED IN WIND-BORNE DEBRIS REGIONS THIS PRODUCT COMPLIES WITH SECTION 1609.1.4 OF THE FLORIDA BUILDING CODE AS AN IMPACT RESISTANT PRODUCT AND DOES NOT REQUIRE THE USE OF AN EXTERNAL IMPACT RESISTANT COVERING. THIS PRODUCT DOES NOT MEET THE REQUIREMENTS FOR ENHANCED PROTECTION OF ESSENTIAL FACILITIES AS DEFINED IN ASTM E1996.
4. FOR 2X STUD FRAMING CONSTRUCTION, ANCHORING OF THESE UNITS SHALL BE THE SAME AS THAT SHOWN FOR 2X BUCK MASONRY CONSTRUCTION.
5. CONDITIONS NOT COVERED BY THIS DRAWING ARE SUBJECT TO FURTHER ENGINEERING ANALYSIS.

| TABLE OF CONTENTS | |
|-------------------|---|
| 1 | TYPICAL ELEVATION, DESIGN PRESSURES & GENERAL NOTES |
| 2 | VERTICAL & HORIZONTAL CROSS SECTIONS |
| 3 | BUCK & FRAME ANCHORING |
| 4 | COMPONENTS |
| 5 | BILL OF MATERIALS & COMPONENTS |



SINGLE OPAQUE DOOR
 VIEWED FROM EXTERIOR

| SWING | OVERALL FRAME DIMENSION | DESIGN PRESSURE (PSF) | |
|----------|-------------------------|-----------------------|----------|
| | | POSITIVE | NEGATIVE |
| INSWING | 37.59" x 97.92 | +67.00 | -67.00 |
| OUTSWING | 37.59" x 96.42" | +67.00 | -67.00 |

Documents Prepared By:

RW BUILDING CONSULTANTS, INC.
 P.O. Box 230 Vairico FL. 33595
 Phone No.: 813.659.9197
 Florida Board of Professional Engineers
 Certificate of Authorization No. 9813
Wendell W. Haney 11-8-05
 Wendell W. Haney, P.E. NO. 54158

PRODUCT: 3'0 X 8'0 "CLASSIC CRAFT"
 FIBERGLASS SINGLE DOOR
 INSWING/OUTSWING "IMPACT"
 PART OR ASSEMBLY:

TYPICAL ELEVATION, DESIGN PRESSURES & GENERAL NOTES

| NO. | DATE | BY | REVISIONS |
|-----|------|----|-----------|
| | | | |
| | | | |
| | | | |
| | | | |

DATE: 11/17/05

SCALE: N.T.S.

DWG. BY: AEM

CHK. BY: WWH

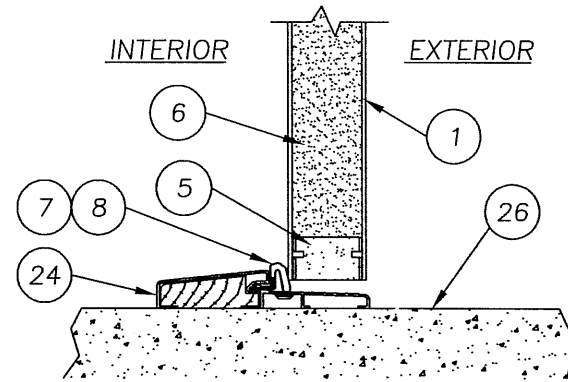
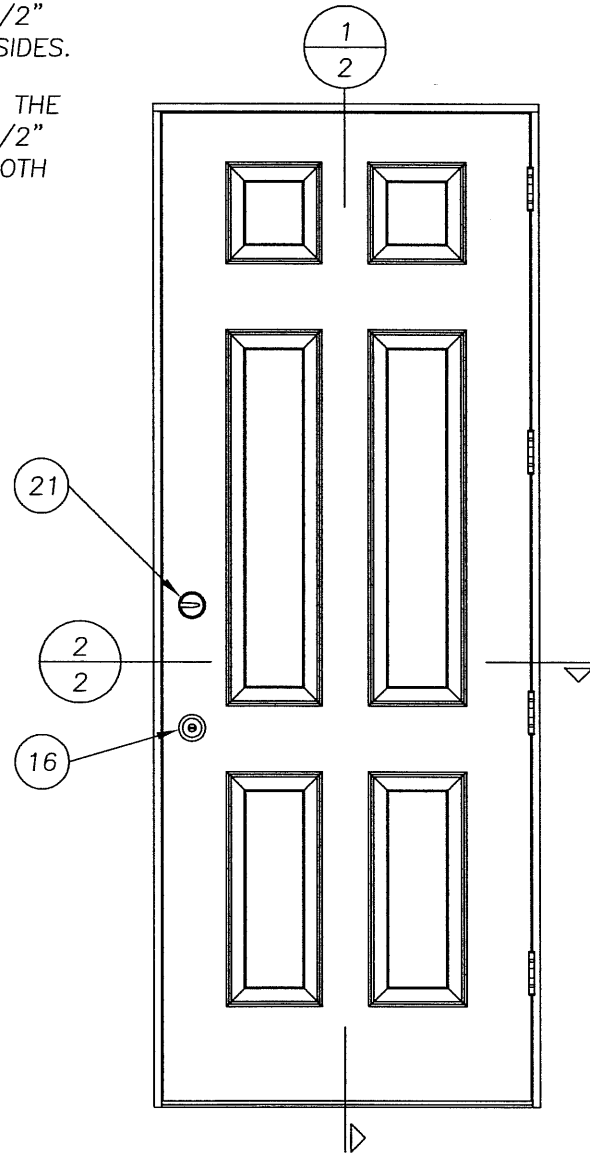
DRAWING NO.:

FL-675

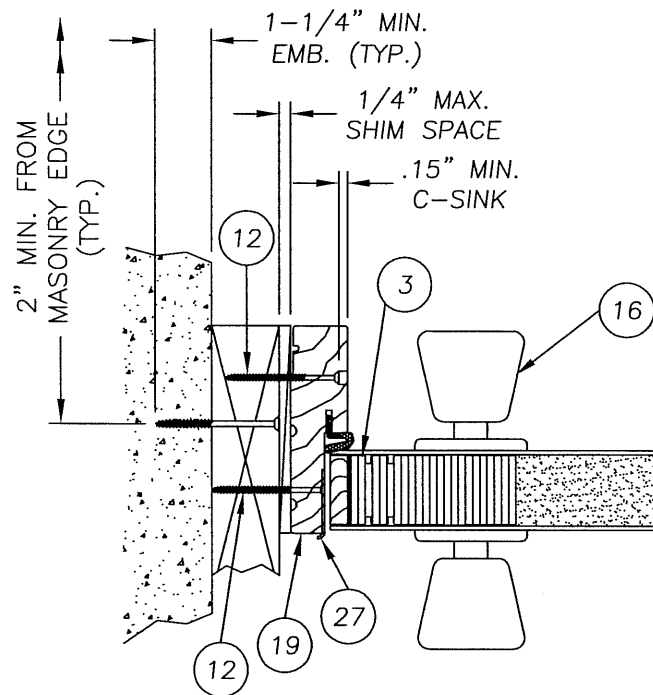
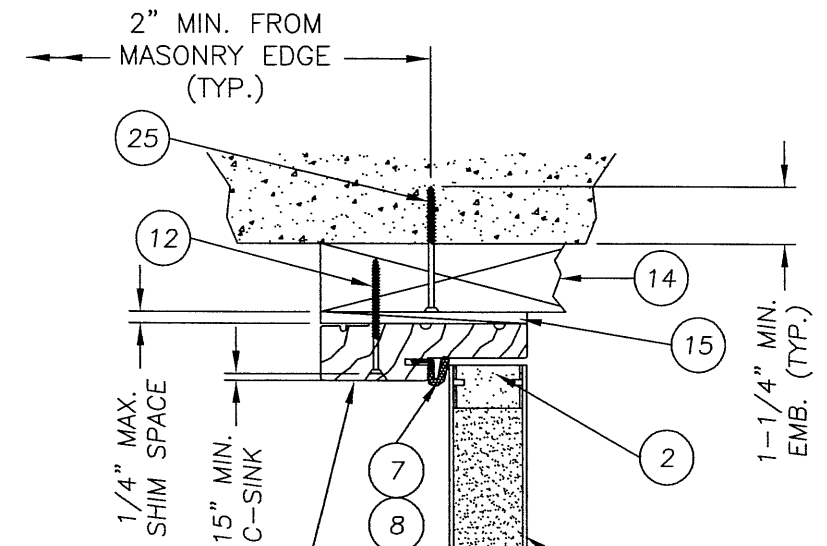
SHEET 1 OF 5

NOTES

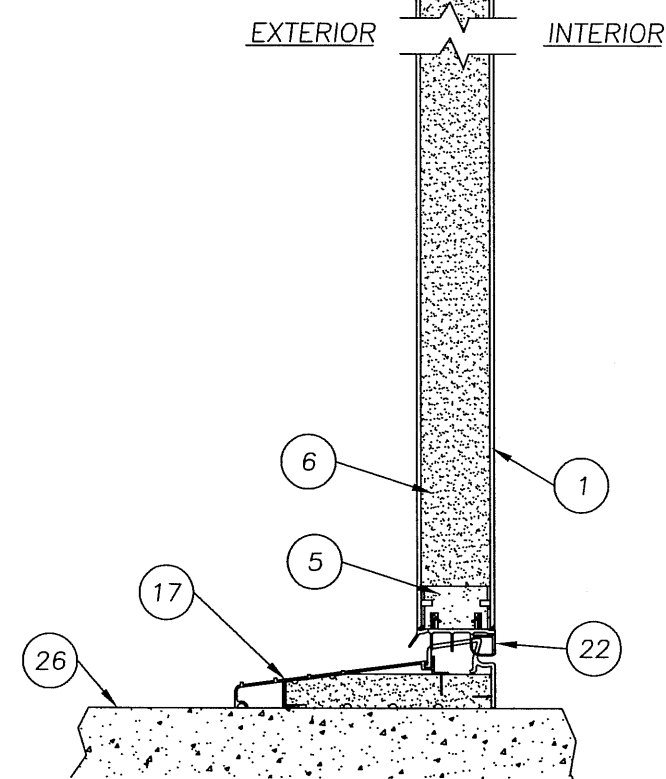
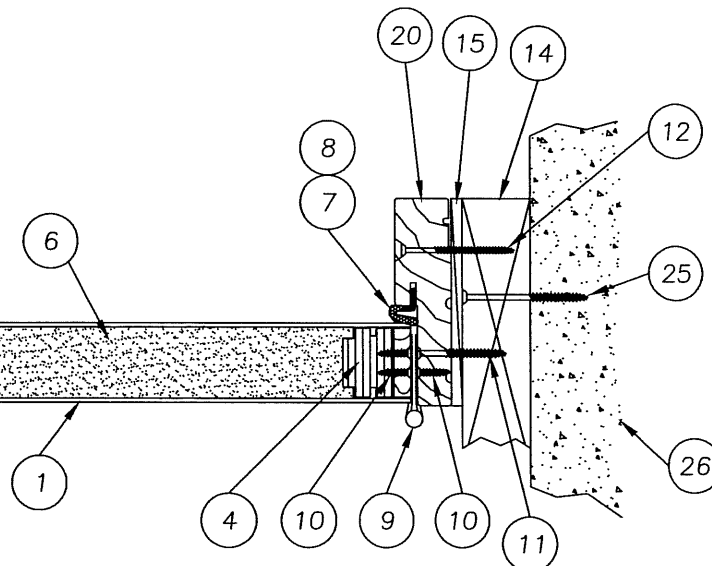
1. THE HEAD JAMB IS ATTACHED TO THE SIDE JAMBS WITH (3) 16GA. x 1/2" CROWN x 2" STAPLES AT BOTH SIDES.
2. THE THRESHOLD IS ATTACHED TO THE SIDE JAMBS WITH (2) 16GA. x 1/2" CROWN x 2-1/2" STAPLES AT BOTH SIDES.



1 VERTICAL CROSS SECTION
2 @ SILL OUTSWING THRESHOLD



2 HORIZONTAL CROSS SECTION
2 INSWING CONFIGURATION



1 VERTICAL CROSS SECTION
2 INSWING CONFIGURATION

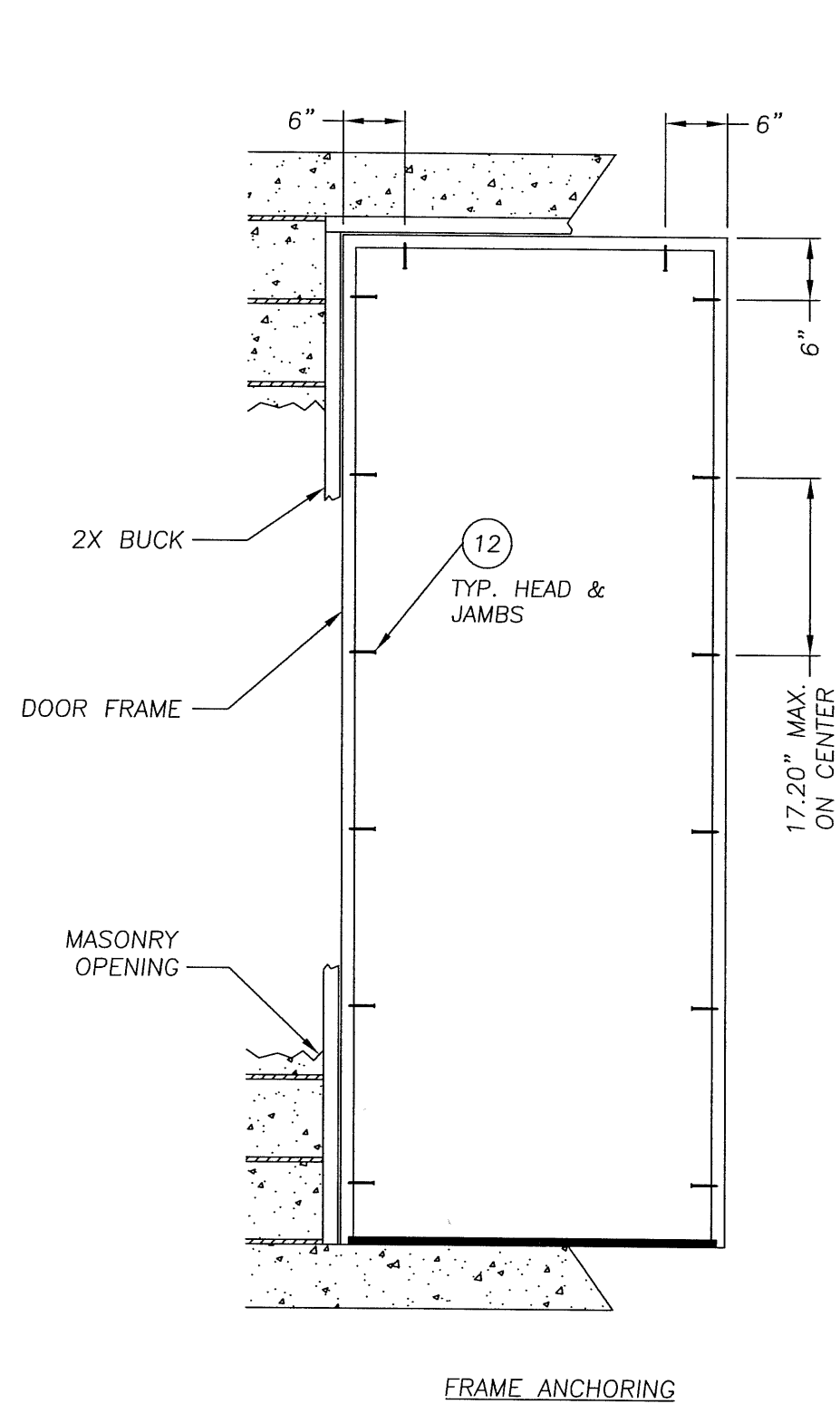
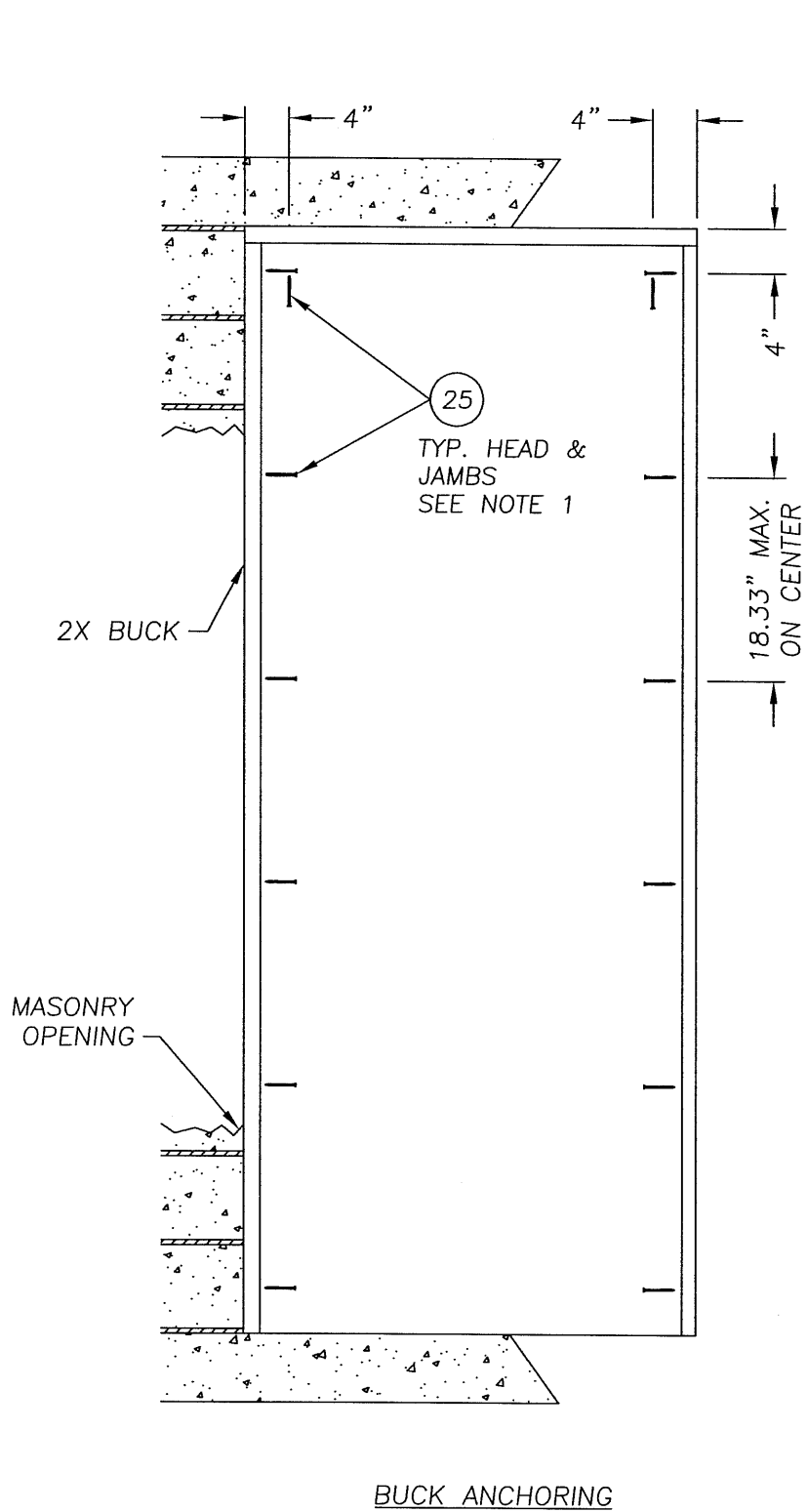
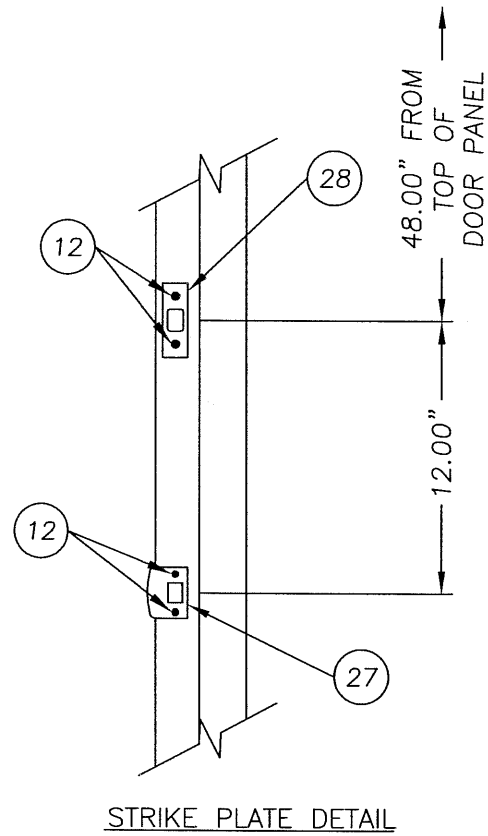
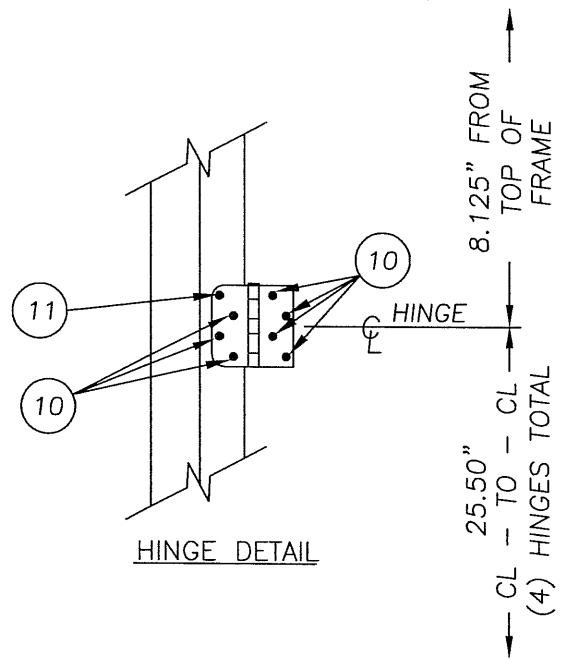
Documents Prepared By:

RW BUILDING CONSULTANTS, INC.
P.O. Box 230 Valrico FL, 33595
Phone No.: 813.659.9197
Florida Board of Professional Engineers
Certificate Of Authorization No. 9813
Wendell W. Hamby 11/18/05
Wendell W. Hamby, P.E. No. 54158

PRODUCT:
3'0 X 8'0 "CLASSIC CRAFT"
FIBERGLASS SINGLE DOOR
INSWING/OUTSWING "IMPACT"
PART OR ASSEMBLY:
VERTICAL & HORIZONTAL
CROSS SECTIONS

| NO. | DATE | BY |
|-----|------|----|
| | | |
| | | |
| | | |
| | | |

DATE: 11/17/05
SCALE: N.T.S.
DWG. BY: AEM
CHK. BY: WWH
DRAWING NO.: FL-675
SHEET 2 OF 5



NOTES:

1. 3/16" TAPCONS REQUIRE A MINIMUM 2" CLEARANCE TO MASONRY EDGES AND A MINIMUM 2-5/16" CLEARANCE TO ADJACENT TAPCONS.

Documents Prepared By:

RW BUILDING CONSULTANTS, INC.
 P.O. Box 230 Valrico FL 33595
 Phone No.: 813.659.9197
 Florida Board of Professional Engineers
 Certificate Of Authorization No. 9813
Wendell W. Haney 11/18/05
 Wendell W. Haney, R.E., No. 54158

PRODUCT:
 3'0" X 8'0" "CLASSIC CRAFT"
 FIBERGLASS SINGLE DOOR
 INSWING/OUTSWING "IMPACT"

PART OR ASSEMBLY:
 BUCK & FRAME
 ANCHORING

| NO. | DATE | BY | REVISIONS |
|-----|------|----|-----------|
| | | | |
| | | | |
| | | | |
| | | | |

DATE: 11/17/05

SCALE: N.T.S.

DWG. BY: AEM

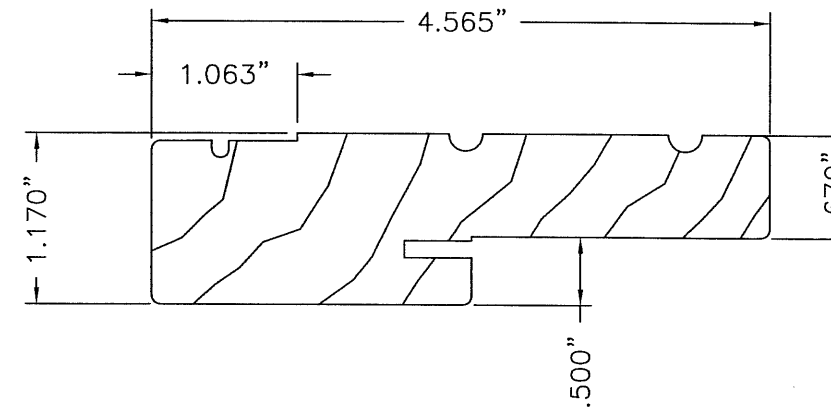
CHK. BY: WWH

DRAWING NO.:

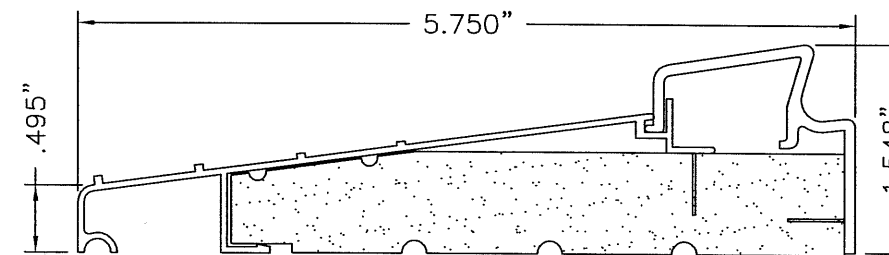
FL-675

SHEET 3 OF 5

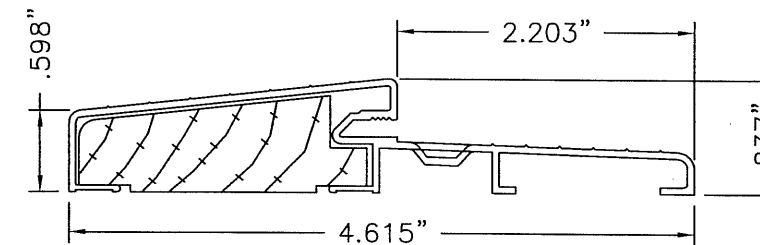
| ITEM | DESCRIPTION | MATERIAL |
|------|--|------------------|
| 1 | C.C. DOOR SKIN .127" MIN. THK. FIBERGLASS BY THERMA-TRU with yield strength Fy(min.)=2,000 psi | FIBERGLASS |
| 2 | C.C. TOP RAIL | WOOD COMPOSITE |
| 3 | C.C. LATCH STILE | LSL / OAK |
| 4 | C.C. HINGE STILE | LSL / OAK |
| 5 | C.C. BOTTOM RAIL | WOOD COMPOSITE |
| 6 | POLYURETHANE FOAM (BASF, 1.9lbs. DENSITY) | FOAM |
| 7 | SHORT REACH COMPRESSION WEATHERSTRIP (THERMA-TRU) FOAM CELL W/VINYL JACKET | FOAM |
| 8 | LONG REACH COMPRESSION WEATHERSTRIP (THERMA-TRU) FOAM CELL W/VINYL JACKET | FOAM |
| 9 | 4" x 4" HINGE .097" THK. (THERMA-TRU) | STEEL |
| 10 | #10 x 3/4" PFH WS | STEEL |
| 11 | #10 x 2" PFH WS | STEEL |
| 12 | #8 x 2-1/2" PFH WS | STEEL |
| 13 | NOT USED | - |
| 14 | 2x BUCK | WOOD |
| 15 | MAX. 1/4" SHIM | WOOD |
| 16 | KWIKSET TITAN 700 SERIES PASSAGE LOCK | - |
| 17 | SELF ADJUSTING INSWING SADDLE THRESHOLD (.45" WALL AL. - .080" WALL VINYL) | ALUM./WOOD/VINYL |
| 18 | HEADER (THERMA-TRU, FINGER JOINT PONDEROSA PINE) | WOOD |
| 19 | STRIKE JAMB (THERMA-TRU, FINGER JOINT PONDEROSA PINE) | WOOD |
| 20 | HINGE JAMB (THERMA-TRU, FINGER JOINT PONDEROSA PINE) | WOOD |
| 21 | KWIKSET TITAN 700 SERIES DEADBOLT | - |
| 22 | INSWING DOOR BOTTOM SWEEP (.080" MAX. - .034" MIN. WALL VINYL) | VINYL |
| 23 | NOT USED | - |
| 24 | ONE PIECE BUMP FACE THRESHOLD (THERMA-TRU) .050" WALL AL. | ALUM. / WOOD |
| 25 | 3/16" x 2-3/4" TAPCON | STEEL |
| 26 | MASONRY | CONCRETE |
| 27 | LATCH STRIKE PLATE | STEEL |
| 28 | DEADBOLT STRIKE PLATE | STEEL |



18 19 20 HEAD, LATCH & HINGE JAMB



17 SELF ADJUSTING SADDLE THRESHOLD



24 LOW PROFILE OUTSWING BUMP FACE

Documents Prepared By:
RW BUILDING CONSULTANTS, INC.
P.O. Box 230 Valrico FL 33595
Phone No.: 813.659.9197
Florida Board of Professional Engineers
Certificate of Authorization No. 9813
Wendell W. Hgney 11-18-05
Wendell W. Hgney, P.E. (No. 54158)

PRODUCT:
3'0 X 8'0 "CLASSIC CRAFT"
FIBERGLASS SINGLE DOOR
INSWING/OUTSWING "IMPACT"

PART OR ASSEMBLY:
BILL OF MATERIALS &
COMPONENTS

| NO. | DATE | BY | REVISIONS |
|-----|------|----|-----------|
| | | | |
| | | | |
| | | | |

DATE: 11/17/05
SCALE: N.T.S.
DWG. BY: AEM
CHK. BY: WWH
DRAWING NO.: FL-675
SHEET 5 OF 5