

THERMA-TRU CORPORATION

118 INDUSTRIAL DRIVE
EDGERTON, OHIO 43517
PH. (419) 298-1740

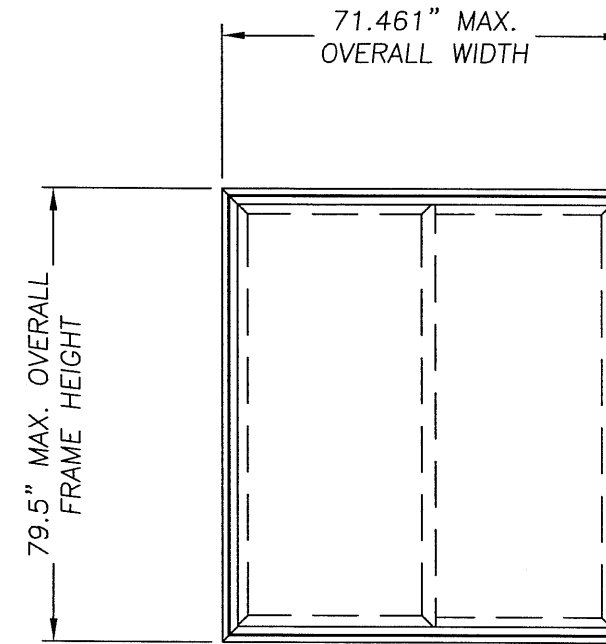
"SLIDING PATIO DOOR FRAME ANCHORING"

GENERAL NOTES

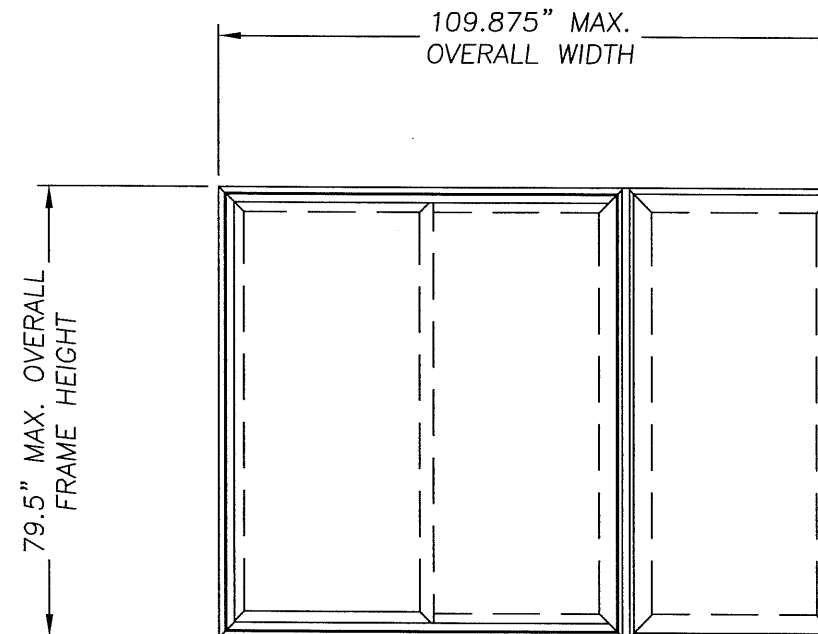
1. THIS PRODUCT HAS BEEN EVALUATED AND IS IN COMPLIANCE WITH THE FLORIDA BUILDING CODE EXCLUDING THE "HIGH VELOCITY HURRICANE ZONE".
2. SEPARATE PRODUCT APPROVALS FOR EACH THERMA-TRU DOOR PRODUCT USED WITH THIS ANCHORING APPROVAL MUST BE SUBMITTED WITH THIS PRODUCT APPROVAL. CONSTRUCTION OF THE ASSEMBLY MUST BE IN ACCORDANCE WITH THE CONSTRUCTION OF THE COMPANION DOOR PRODUCT APPROVAL SUBMITTED.
3. THE DESIGN PRESSURE RATING OF THE TOTAL ASSEMBLY SHALL BE THE LESSER OF THE DP RATING OF THE FRAME ANCHORING SHOWN IN THIS APPROVAL OR THE DP RATING OF THE PRODUCT APPROVAL FOR THE DOOR PRODUCT USED.
4. MAIN MEMBER (BUCK OR STUD) FRAMING IS SPRUCE-PINE-FIR (SG = 0.42) OR BETTER.
5. PRODUCT ANCHORS SHALL BE AS LISTED AND SPACED AS SHOWN ON DETAILS. ANCHOR EMBEDMENT TO BASE MATERIAL SHALL BE BEYOND WALL DRESSING OR STUCCO.
6. THIS FRAME ANCHORING APPROVAL ADDRESSES TRANSFER OF WIND LOADS TO THE MAIN STRUCTURE. THE COMPANION DOOR PRODUCT APPROVAL SUBMITTED MUST BE APPROVED IN THE SAME OR SMALLER SIZE, SAME CONFIGURATION AND FRAME MATERIAL.
7. CONDITIONS NOT COVERED BY THIS DRAWING ARE SUBJECT TO FURTHER ENGINEERING ANALYSIS.

USABLE CONFIGURATIONS: XO, OX, OOX, XOO & OXO

TABLE OF CONTENTS	
SHEET #	DESCRIPTION
1	TYPICAL ELEVATION, DESIGN PRESSURES & GENERAL NOTES
2	ANCHOR CROSS SECTION MASONRY
3	ANCHOR CROSS SECTION WOOD/STL. STUD



2 PANEL PATIO DOOR



3 PANEL PATIO DOOR

UNIT TYPE	MAXIMUM OVERALL NOMINAL SIZE	DESIGN PRESSURE	
		POSITIVE	NEGATIVE
3 PANEL PATIO DOOR	9'0" x 6'8"	+50.0 PSF	-50.0 PSF
2 PANEL PATIO DOOR	6'0" x 6'8"	+50.0 PSF	-50.0 PSF

Documents Prepared By:

RW BUILDING CONSULTANTS, INC.
P.O. Box 230 Vairico, FL 33595
Phone No.: 813.659.9197
Florida Board of Professional Engineers
Certificate Of Authorization No. 9812
Wendell W. Maney, P.E. No. 54158

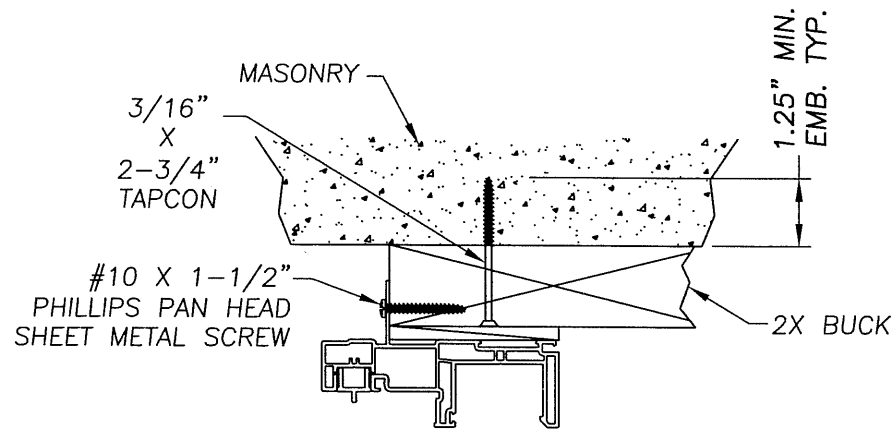
PRODUCT: THERMA-TRU 3 PANEL PATIO DOOR
WOOD FRAME
SYSTEM ANCHORING
PART OR ASSEMBLY:
TYPICAL ELEVATION, DESIGN PRESSURES & GENERAL NOTES

NO.	DATE	BY	REVISIONS

DATE: 9/21/05
SCALE: N.T.S.
DWG. BY: EW
CHK. BY: WWH
DRAWING NO.: FL-624
SHEET 1 OF 3

R:\PROJ 650 - 800\PF800\5265.2\FL-624-I.DWG

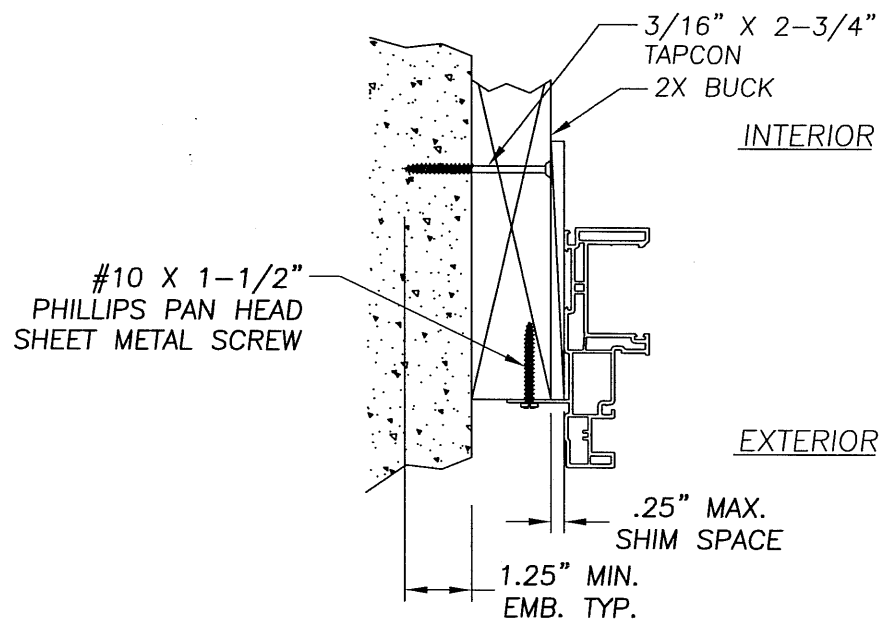
\\Rwbcsv\proj\650 - 800\p8000\5265.2\FL-624-2.dwg



EXTERIOR

INTERIOR

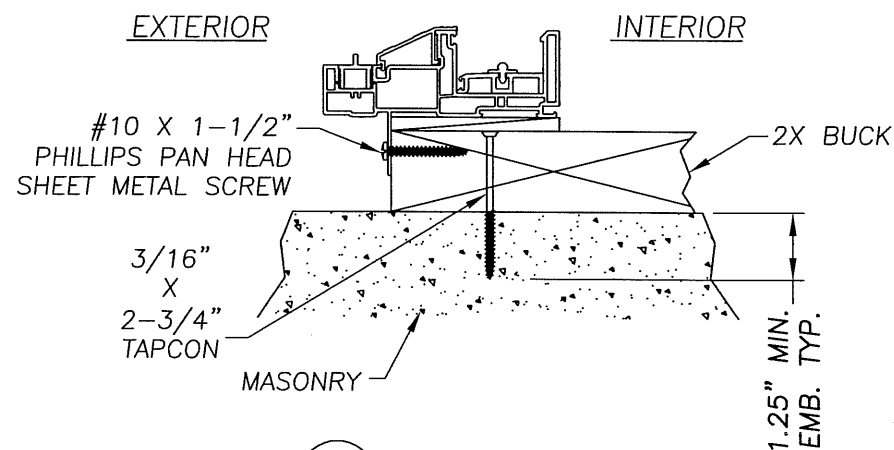
1 HORIZONTAL CROSS SECTION
2 AT HEAD



INTERIOR

EXTERIOR

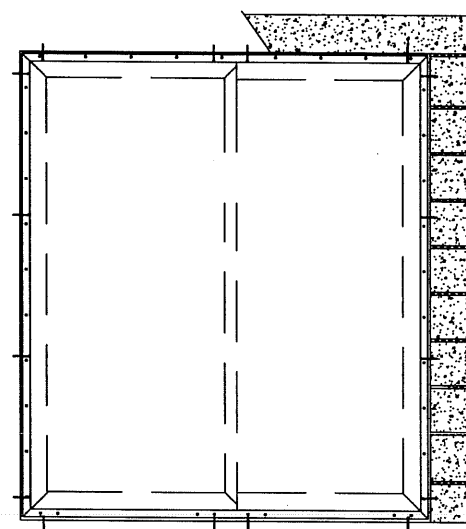
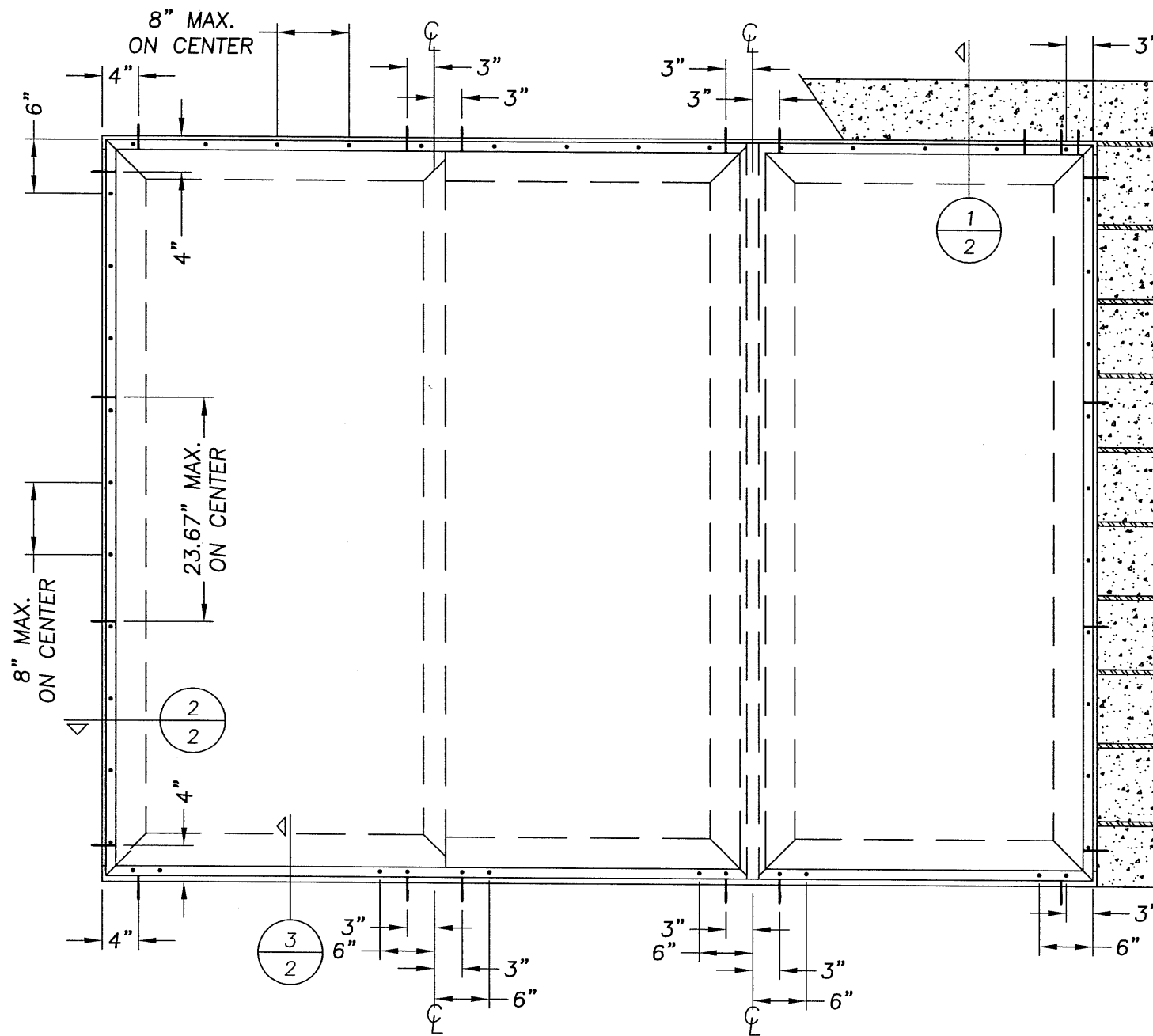
2 VERTICAL CROSS SECTION
2 AT JAMB



EXTERIOR

INTERIOR

3 HORIZONTAL CROSS SECTION
2 AT SILL



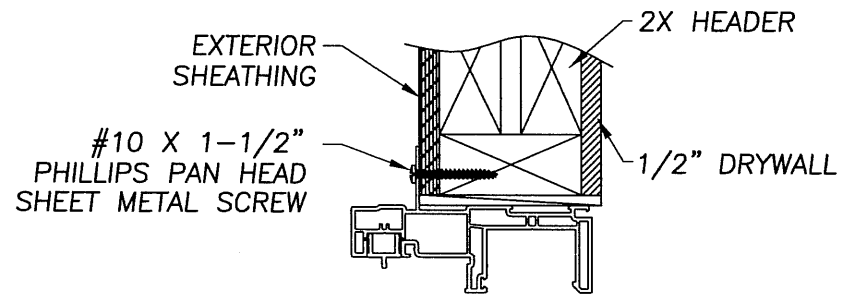
Documents Prepared By:

RW BUILDING CONSULTANTS, INC.
P.O. Box 230 Valrico FL 33595
Phone No.: 813.659.9197
Florida Board of Professional Engineers
Certificate Of Authorization No. 9813
Wendell W. Haney
Wendell W. Haney, P.E. No. 54158

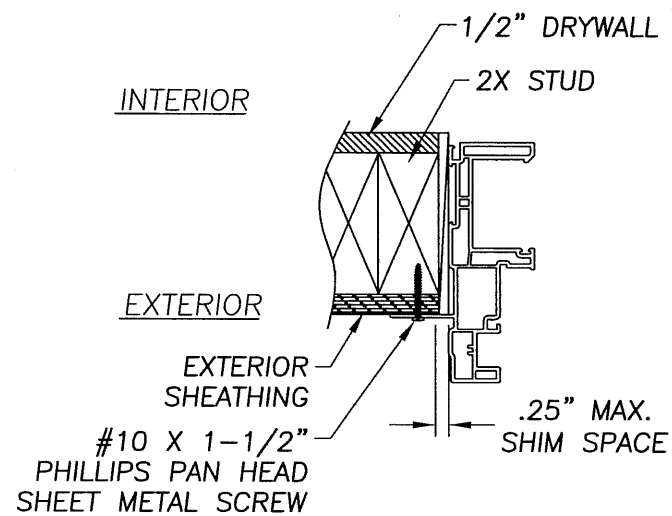
PRODUCT: THERMA-TRU SLIDING PATIO
DOOR WITH SIDELITE
PART OR ASSEMBLY: ANCHORING CROSS SECTION
MASONRY

NO.	DATE	REVISIONS
1	8/02/05	REVISE TO 2004 FBC
EW		BY

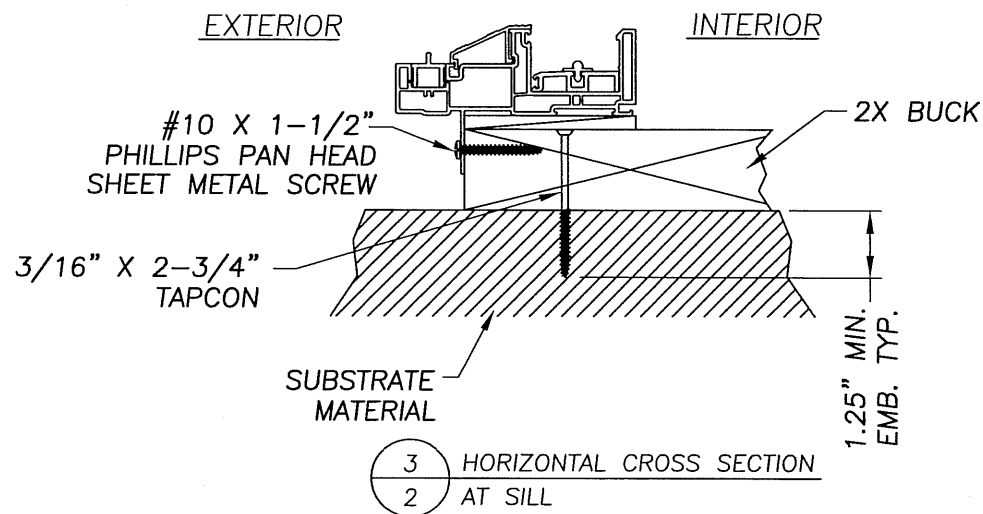
DATE: 09/22/05
SCALE: N.T.S.
DWG. BY: EW
CHK. BY: WWH
DRAWING NO.: FL-624
SHEET 2 OF 3



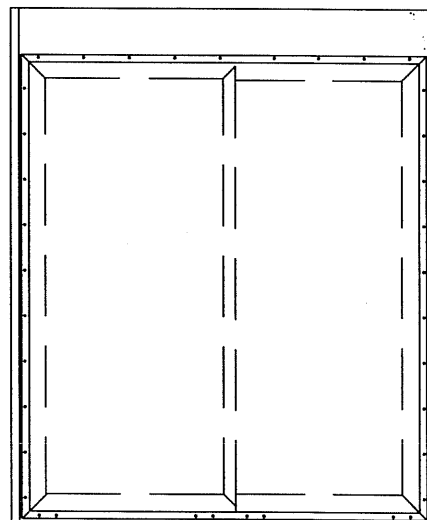
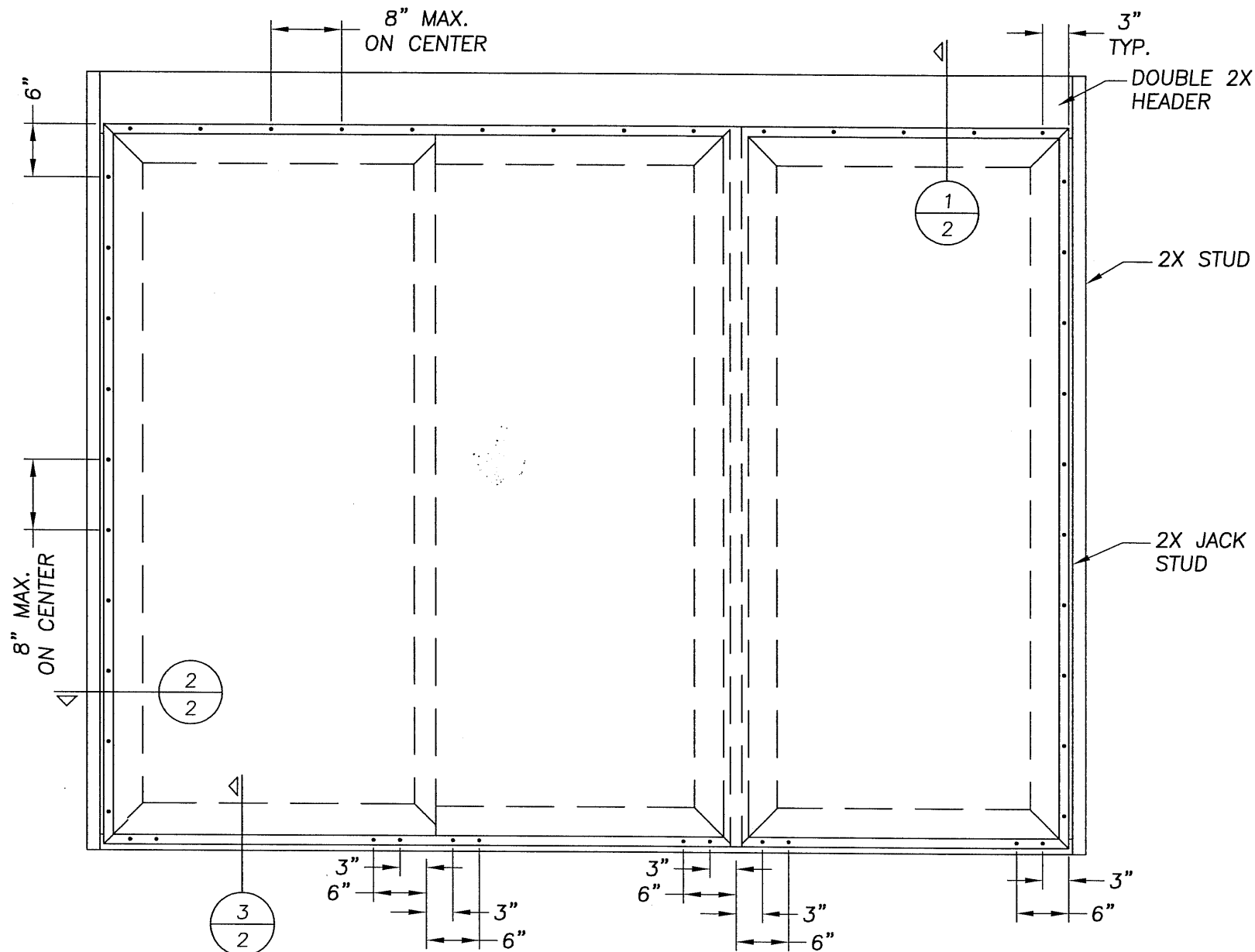
1 HORIZONTAL CROSS SECTION
2 AT HEAD



2 VERTICAL CROSS SECTION
2 AT JAMB



3 HORIZONTAL CROSS SECTION
2 AT SILL



Documents Prepared By:

RW BUILDING CONSULTANTS, INC.
P.O. Box 230 Valrico FL 33595
Phone No.: 813.659.9197
Florida Board of Professional Engineers
Certificate Of Authorization No. 9813
Wendell W. Harley, P.E. No. 54158

PRODUCT:
THERMA-TRU SLIDING PATIO
DOOR WITH SIDELITE

PART OR ASSEMBLY:
ANCHORING CROSS SECTION
WOOD . STL.

NO.	DATE	REVISIONS
1	8/02/05	REVISE TO 2004 FBC
		EW BY

DATE: 09/22/05

SCALE: N.T.S.

DWG. BY: EW

CHK. BY: WWH

DRAWING NO.:

FL-624

SHEET 3 OF 3